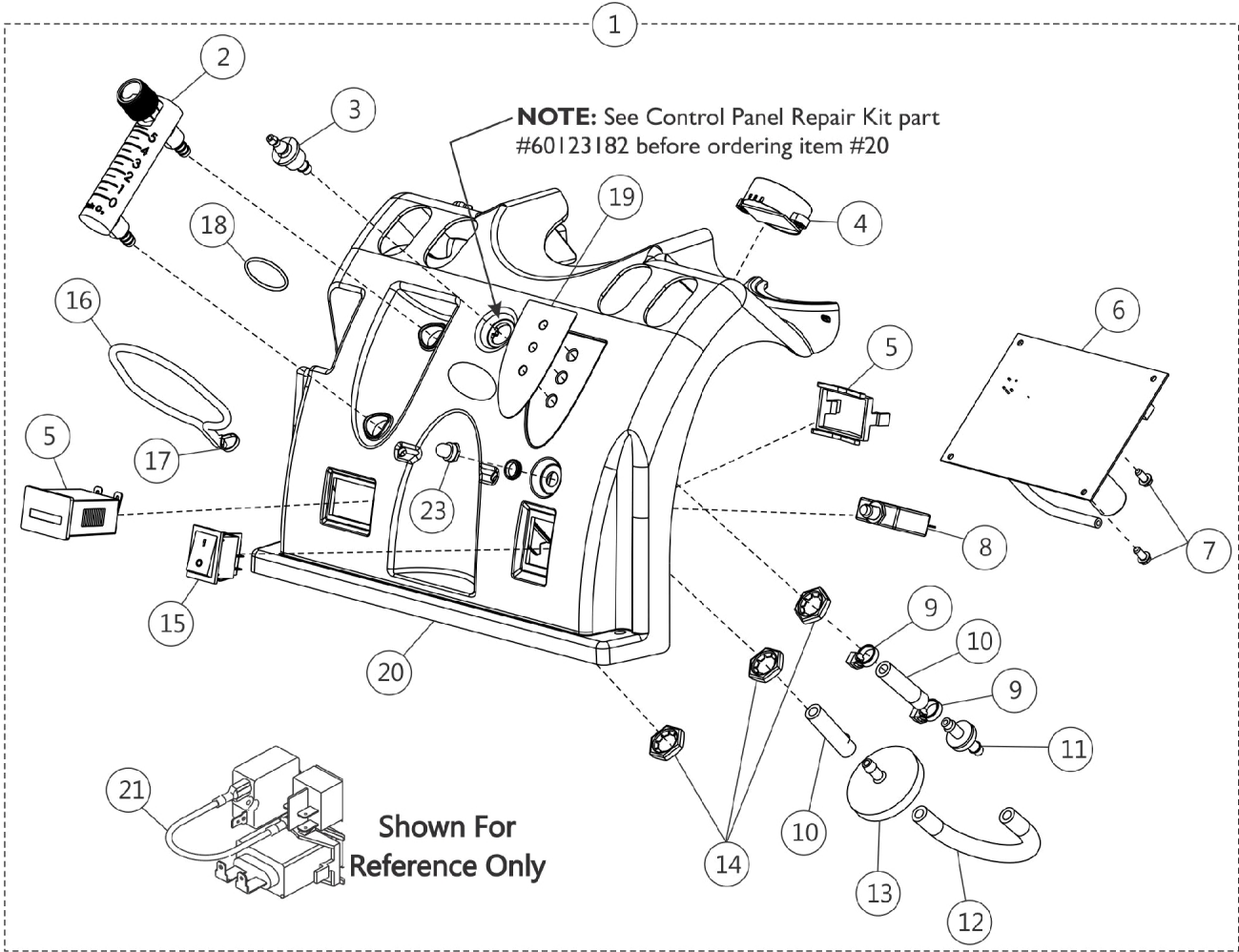


Control Panel and P.C. Board

Perfecto2 AW



SRE_040A



Control Panel and P.C. Board Perfecto2 AW

Item Number	Note	Part Number	Description	Quantity Per	
				Package	Assembly
1		1154098-NLA	NLA - Control Panel w/ SensO2 Assembly - PO2AW	1	1
2		1110561	Flowmeter without Palnuts - 5 Liter	1	1
3		2000473	Connector, Barbed (1/4")	1	1
4		1143503	Horn/Alarm Assembly	1	1
5		2002939-NLA	NLA - Tech Only - Hour Meter Assembly with Clip	1	1
6		1143486	PCB Assembly - PO2/PO2W	1	1
6		1143486E	WARR RPLMT - PCB Assembly - PO2/PO2W	1	1
7		1143499	Screw, Phillips Hex Washer Head (#8-16 x 3/8)	1	2
8		1110824-NLA	NLA - Tech Only - Circuit Breaker (4 AMP)	1	1
9		2001682	Tie Wrap (8" L)	1	2
10		1110473	Tubing, PVC (1/4 x 1-3/4")	1	2
11		2000436	Check Valve, Barb (5/16")	1	1
12		1143144	Tubing, PVC (1/4 x 5")	1	1
13		P0750X030	Filter, Patient HEPA Outlet	1	1
14		2000507	Palnut (9/16-18)	1	3
15		1139950	Switch, Powe On/Off	1	1
16		60125500	Cord, Elastic	1	1
17		1006525	Tie Wrap (3-29/32" L)	1	1
18		1095497	Decal, Invacare Logo (1.6)	1	1
19		1143479	Label, LED - PO2/PO2V/PO2W	1	1
20	D	1143469	Panel, Control	1	1
	C,D	60123182	Kit, Control Panel Repair	1	1
			Plate, External Outlet Port	1	1
			Plate, Internal Outlet Port	1	1
			Washer, Foam	1	1
			Tie Wrap (8" L)	1	1
			Manual, Service for Control Panel Repair	1	1
21		2001764	Jumper Wire Assembly	1	1
22		1143501-NLA	NLA - Power Jumper Assembly	1	1
23		1112562-NLA	NLA - Tech Only - Seal, Circuit Breaker	1	1
	A,B	1154101-NLA	NLA - Tech Only - Main Harness Assembly	1	1
	A,B	1143526	Wire Harness Valve Assembly	1	1

NOTE: A - Not Shown.
B - Connects to PC Board.
C - Not Shown
D - Control Panel Repair Kit part #60123182 assembles to the Control Panel before attaching item #3 Brass Barbed Connector. This eliminates the need to replace a complete Control Panel.