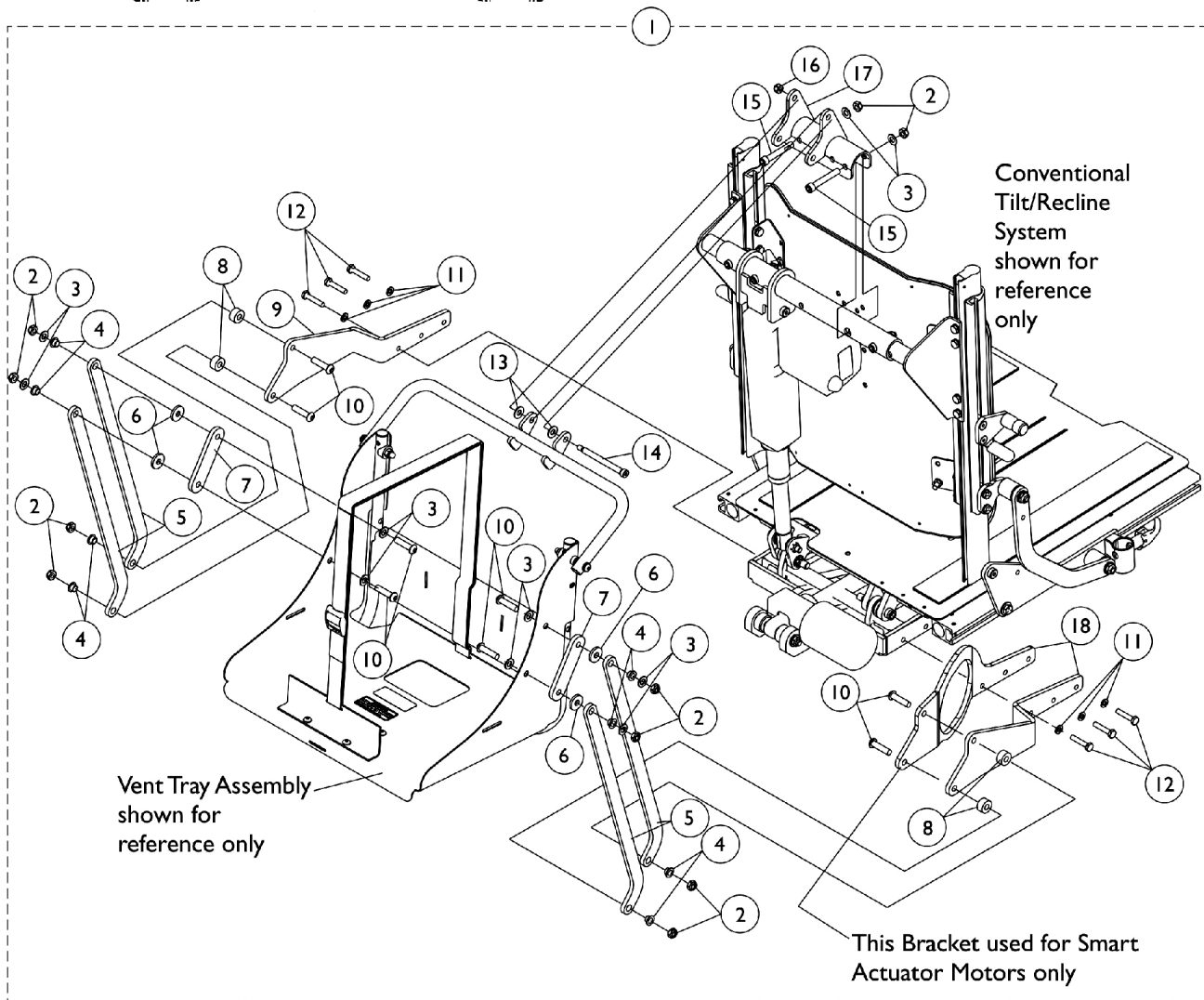
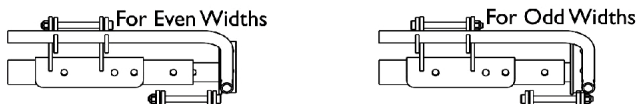


# Vent Tray Mounting Hardware

## Contoura (CGR/CGTR) and Conventional (CGR/CGTR)

When a Vent Tray Assembly is ordered for the first time in the field for 3G Storm Series, the chair must be returned to Invacare for installation. Call the Technical Service Department for assistance at 1-800-832-4707. For TDX SP/SR models, refer to page titled "Vent Tray Kits". Vent Tray is excluded from 3G Storm Series and TDX SP/SR model wheelchairs with TRRO option.

Vent Tray Mounting Shown for Reference only



## Vent Tray Mounting Hardware

### Contoura (CGR/CGTR) and Conventional (CGR/CGTR)

**When a Vent Tray Assembly is ordered for the first time in the field for 3G Storm Series, the chair must be returned to Invacare for installation. Call the Technical Service Department for assistance at 1-800-832-4707. For TDX SP/SR models, refer to page titled "Vent Tray Kits". Vent Tray is excluded from 3G Storm Series and TDX SP/SR model wheelchairs with TRRO option.**

Item Number	Note	Part Number	Description	Quantity Per	
				Package	Assembly
1	A	1148660	Kit, Vent Tray Mounting Hardware for (Contoura Recline, Tilt/Recline) & (Conventional Recline, Tilt/Recline)	1	1
2			Locknut (5/16-18)	1	10
3			Washer, Flat (5/16 x 5/8 x 1/16")	1	10
4			Bushing, Flange	1	8
5			Bracket, Lower Vent, Black	1	4
6			Washer, Nylon (5/16 x 7/8 x 1/8")	1	4
7			Plate, Support Vent - Black	1	2
8			NLA - Bushing (3/8")	1	4
9			Bracket, Lower Vent Mounting, Black - Left	1	1
10			NLA - Screw Allen Head (5/16-24 x 1-1/4")	1	8
11			Lockwasher, Split (1/4")	1	6
12			Screw, Hex Head (1/4-20 x 1-1/4")	1	6
13			Washer, Nylon (5/16 x 11/16 x 1/16")	1	2
14			Screw, Shoulder Hex Socket Head (5/16" x 3", 1/4-20)	1	1
15			Screw, Socket Head w/ Patch (5/16-18 x 2")	1	2
16			Locknut (1/4-20)	1	1
17			Bracket, Upper Mounting Vent, Black	1	1
18			Bracket, Lower Vent Mounting, Black - Right	1	1
1	B	1153641	Kit, Vent Tray Mounting Hardware (Smart) for (Contoura Recline, Tilt/Recline) & (Conventional Recline, Tilt/Recline)	1	1
2			Locknut (5/16-18)	1	10
3			Washer, Flat (5/16 x 5/8 x 1/16")	1	10
4			Bushing, Flange	1	8
5			Bracket, Lower Vent, Black	1	4
6			Washer, Nylon (5/16 x 7/8 x 1/8")	1	4
7			Plate, Support Vent - Black	1	2
8			NLA - Bushing (3/8")	1	4
9			Bracket, Lower Vent Mounting, Black - Left	1	1
10			NLA - Screw Allen Head (5/16-24 x 1-1/4")	1	8
11			Lockwasher, Split (1/4")	1	6
12			Screw, Hex Head (1/4-20 x 1-1/4")	1	6
13			Washer, Nylon (5/16 x 11/16 x 1/16")	1	2
14			Screw, Shoulder Hex Socket Head (5/16" x 3", 1/4-20)	1	1
15			Screw, Socket Head w/ Patch (5/16-18 x 2")	1	2
16			Locknut (1/4-20)	1	1
17			Bracket, Upper Mounting Vent, Black	1	1
18			Bracket, Lower Vent Mounting, Smart, Black - Right	1	1
9		1146332	Bracket, Lower Vent Mounting, Black - Left	1	1

## Vent Tray Mounting Hardware

### Contoura (CGR/CGTR) and Conventional (CGR/CGTR)

**When a Vent Tray Assembly is ordered for the first time in the field for 3G Storm Series, the chair must be returned to Invacare for installation. Call the Technical Service Department for assistance at 1-800-832-4707. For TDX SP/SR models, refer to page titled "Vent Tray Kits". Vent Tray is excluded from 3G Storm Series and TDX SP/SR model wheelchairs with TRRO option.**

Item Number	Note	Part Number	Description	Quantity Per	
				Package	Assembly
18	C	1146331	Bracket, Lower Vent Mounting, Black - Right	1	1
18	D	1153632	Bracket, Lower Vent Mounting, Smart, Black - Right	1	1
NOTE: A - Includes items 2-18 and used for seating systems with a Conventional Actuator Motor B - Includes 2-18 and used for seating systems with a Smart Actuator Motor C - Used when a Conventional Actuator Motor is used D - Used when a Smart Actuator Motor is used					