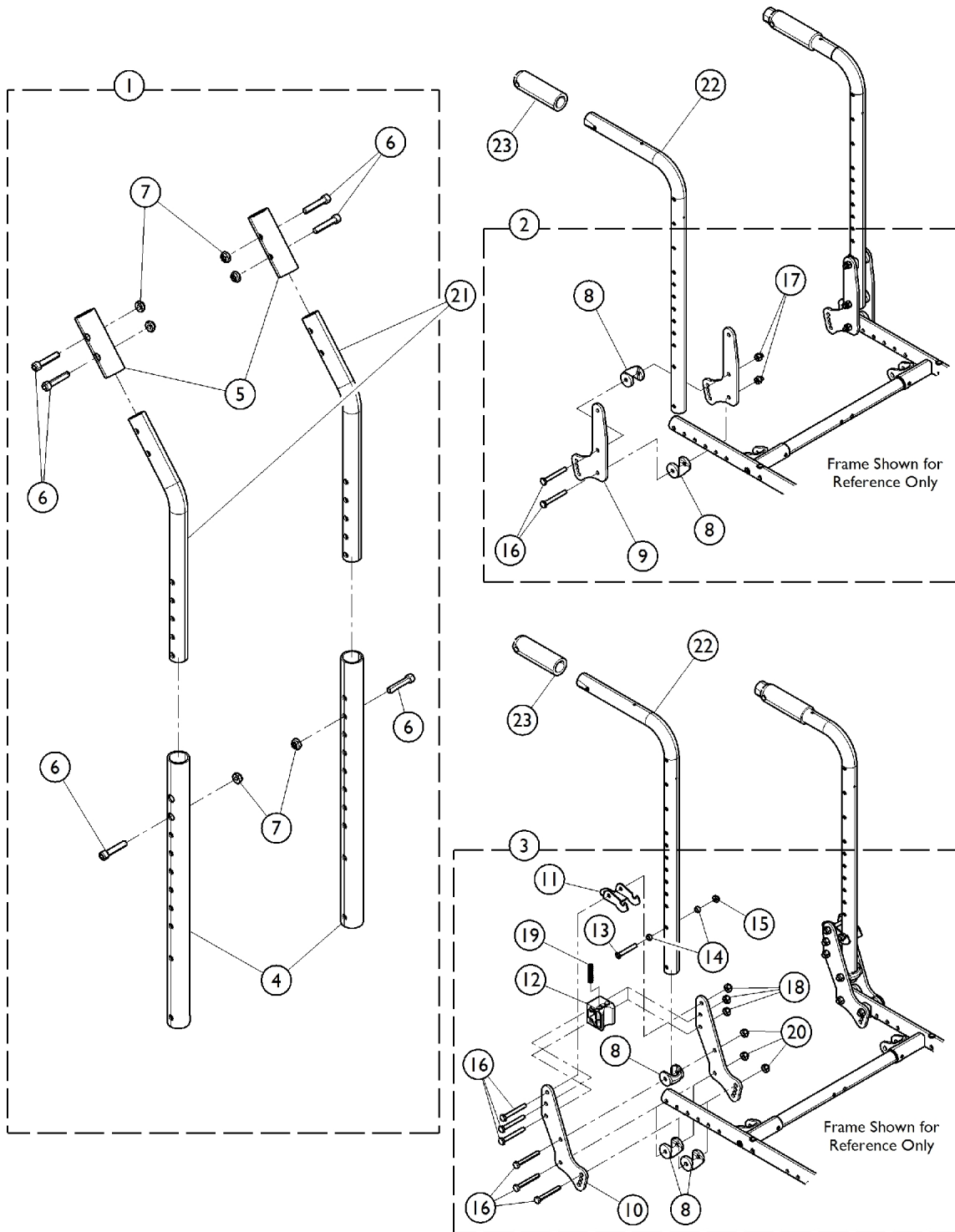


# Adjustable Height Back Canes



## Adjustable Height Back Canes

Item Number	Note	Part Number	Description	Quantity Per	
				Package	Assembly
1	A	1134189	Adjustable Height Cane Assembly (Pair)	1	1
4			Tube, Receiver Cane, Adjustable Height, Black	1	2
5			Tube, Adapter, Stroller Handle, Black	1	2
6			Screw, Allen Head (1/4-28 x 1-1/4")	1	6
7			Locknut (1/4-28)	1	6
2	B	1131323	Kit, Back Cane Attaching Hardware	1	1
8			Uni-Washer, Coved	1	4
9			Plate, Back	1	2
16			Screw, Hex Head (1/4-28 x 2")	1	4
17			Nut, Hex (1/4-28)	1	4
3	C	1127687-NLA	NLA - Kit, Back Cane Attaching Hardware	1	1
8			Uni-Washer, Coved	1	3
10			NLA - Plate, Back	1	2
11			NLA - Latch, Seat, Black	1	1
12			NLA - Block, Stop	1	1
13			Screw, Socket Button Head (1/4-20 x 1-5/8")	1	1
14			NLA - Spacer (1/4 x 3/8 x 3/16")	1	2
15			Locknut (1/4-20)	1	1
16			Screw, Hex Head (1/4-28 x 2")	1	6
18			Locknut (1/4-28)	1	3
19			NLA - Spring, Compression (5/16 x 1-3/8 x 1/32")	1	1
20			Nut, Hex (1/4-28)	1	3
21		1134187	Tube, Cane, Adjustable Height, Black (16 - 20")	1	2
22		1126346	Cane, Back, Black (20" H)	1	1
23		1055398	Grip, Hand, Foam (4")	1	1

NOTE: A - Includes items 4 - 7.  
 B - Includes items 8, 9, 16, and 17. Fold down style. Fold down or fixed style attaching hardware may be used.  
 C - Includes items 8, 10 - 16, and 18 - 20. Fixed style. Fixed or fold down style attaching hardware may be used.