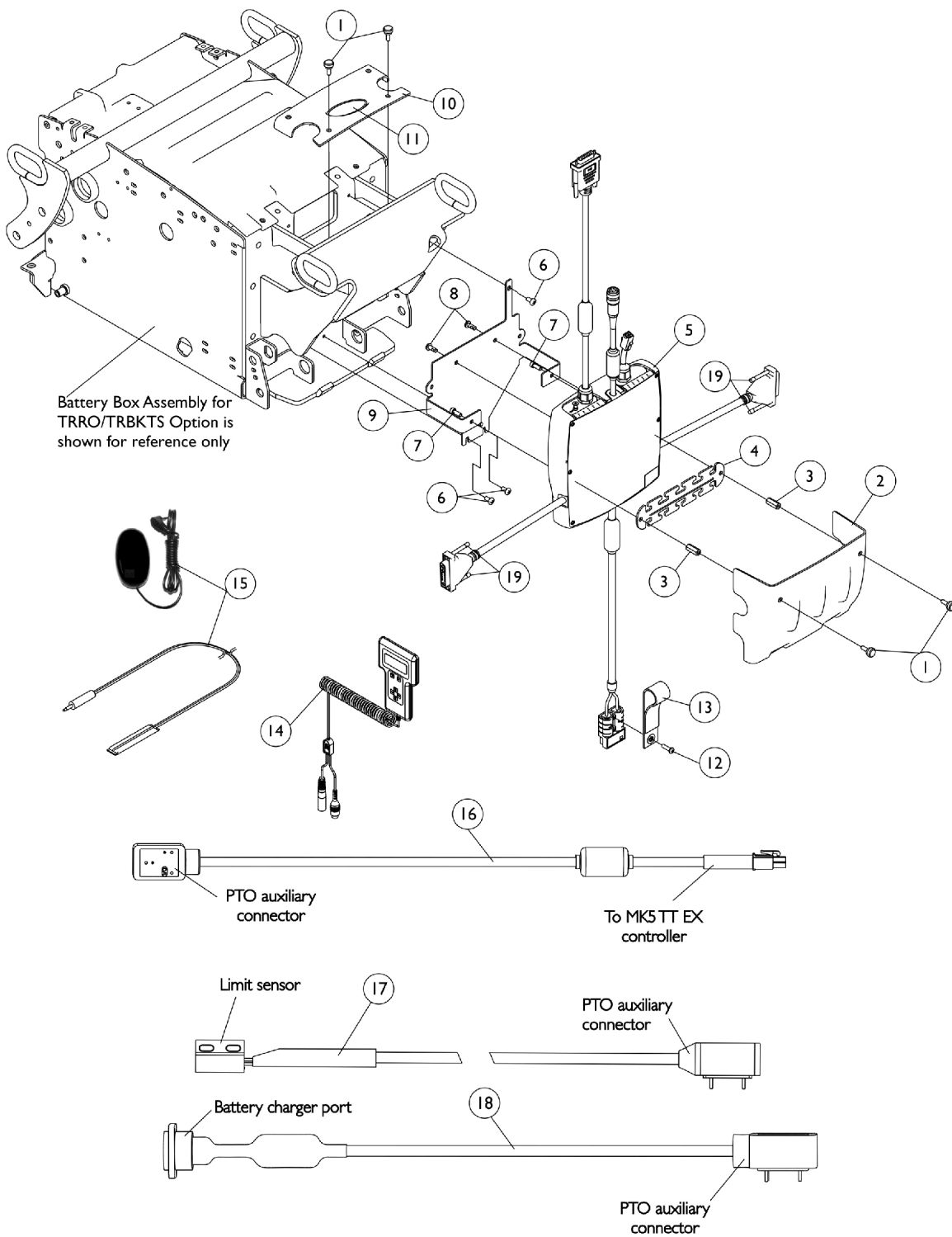


MK5 TT (TrueTrack) EX Controller, Programmer, Shroud Cover and Hardware For TRRO/TRBKTS Option



MK5 TT (TrueTrack) EX Controller, Programmer, Shroud Cover and Hardware For TRRO/TRBKTS Option

Item Number	Note	Part Number	Description	Quantity Per	
				Package	Assembly
1		1117240	Screw, Thumb (#10-32 x 1/2")	1	4
2		1137243-NLA	NLA - Cover, Controller Rear Shroud TRRO/TRBKTS	1	1
3		1113342-NLA	NLA - Stand-Off (#10-32 x 3/4")	1	2
4		1117194-NLA	NLA - Strip, Wiring	1	1
5	D,D1,I	1145076-NLA	NLA - See Footnotes - Part is no longer a repairable item	1	1
6		1022597	Screw, Phillips Pan Head Tap (#10-32 x 3/8")	1	3
7		1113438-NLA	NLA - 3Screw, Socket Head (#10-32 x 1/2")	1	2
8		1104259	Screw, Phillips Pan Head w/ Patch (#10-32 x 1/2")	1	3
9		1133754-NLA	NLA - Bracket, Controller Mounting, Black	1	1
10		1139532-NLA	NLA - Cover, Controller Top Shroud	1	1
11		1095489	Decal, Invacare 3-D Logo (2-1/2" L)	1	1
12		1114276	Screw, Phillips Pan Head (#8-16 x 5/8")	1	1
13		1113331-NLA	NLA - Strap, Battery Plug Pull	1	1
14		1109091-NLA	NLA - Programmer, Remote	1	1
15	F	1020818	Switch, Red Flex Ribbon (Tape) Reset	1	1
15	G	1123276	Kit, Switch, Black Egg Reset w/ Hook/Loop Adhesive Back Fastener & Attaching Screws (EGSBLK)	1	1
16	A	1119418	Cable, Auxiliary Power	1	1
17	B	1092913-NLA	NLA - Cable, Drive Lockout Sensor	1	1
18	E,E1	1114500-NLA	NLA - Cable Option with Charger Connector	1	1
19		1159217	Package, Thumb Screw (1-1/2" L)	10	1
	C	1095204-NLA	NLA - Cable, Virtual Service, Charger/Modem	1	1
	C	1145761	Instruction Sheet, MK5 TT-EX Controller Installation	1	1
	C,H,H1	1134214	Kit, GB HD Controller Gasket Connector	1	1

NOTE: A - Used with MK5 TT (TrueTrack) EX controller for Powered Seating Systems.
 B - Cable sensor is used when a manual recliner is present
 C - Not Shown
 D - Kit includes the Controller, Instruction Sheet and a Controller Gasket Kit part #1134214. Part # 1112979 labeled on the controller is listed for reference only, refer to kit #1145076 when ordering. The MK5 TT EX Controller is used for GB Motors only.
 D1 - Item #16 Power Auxillary Cable is required to function any powered seating system.
 E - Cable Option with Charger Connector is present when a combination MKIV controller and joystick have been ordered as a "special" on-chair configuration.
 E1 - When a MKIV joystick is ordered "special" on-chair to adapt to a MK5 EX controller, a (6 pin to 15 pin adapter cable) will be present. A replacement (6 pin to 15 pin adapter cable) must be ordered from ASL (Adaptive Switch Labs) at 1-800-626-8698
 F - Before 5/24/04
 G - After 5/23/04 the Egg Reset Switch replaced the Red Flex Ribbon (Tape) Reset Switch
 H - Kit was created 10/26/07 and attaches to the controller motor cables. Includes 2 ea. GB HD Controller Gasket Connectors, 2 ea. Silicon Lubricant Packets, 1 ea. Instruction Sheet. Individual components are non-saleable.
 H1 - The kit can retrofit to existing GB HD controllers in the field
 I - Part #1145076 "Kit, MK5 TT-EX Controller w/ Installation Instruction Sheet" is no longer available for sale. As of 7/24/13 the MK5 TT (TrueTrack) EX Controller is no longer a repairable item.