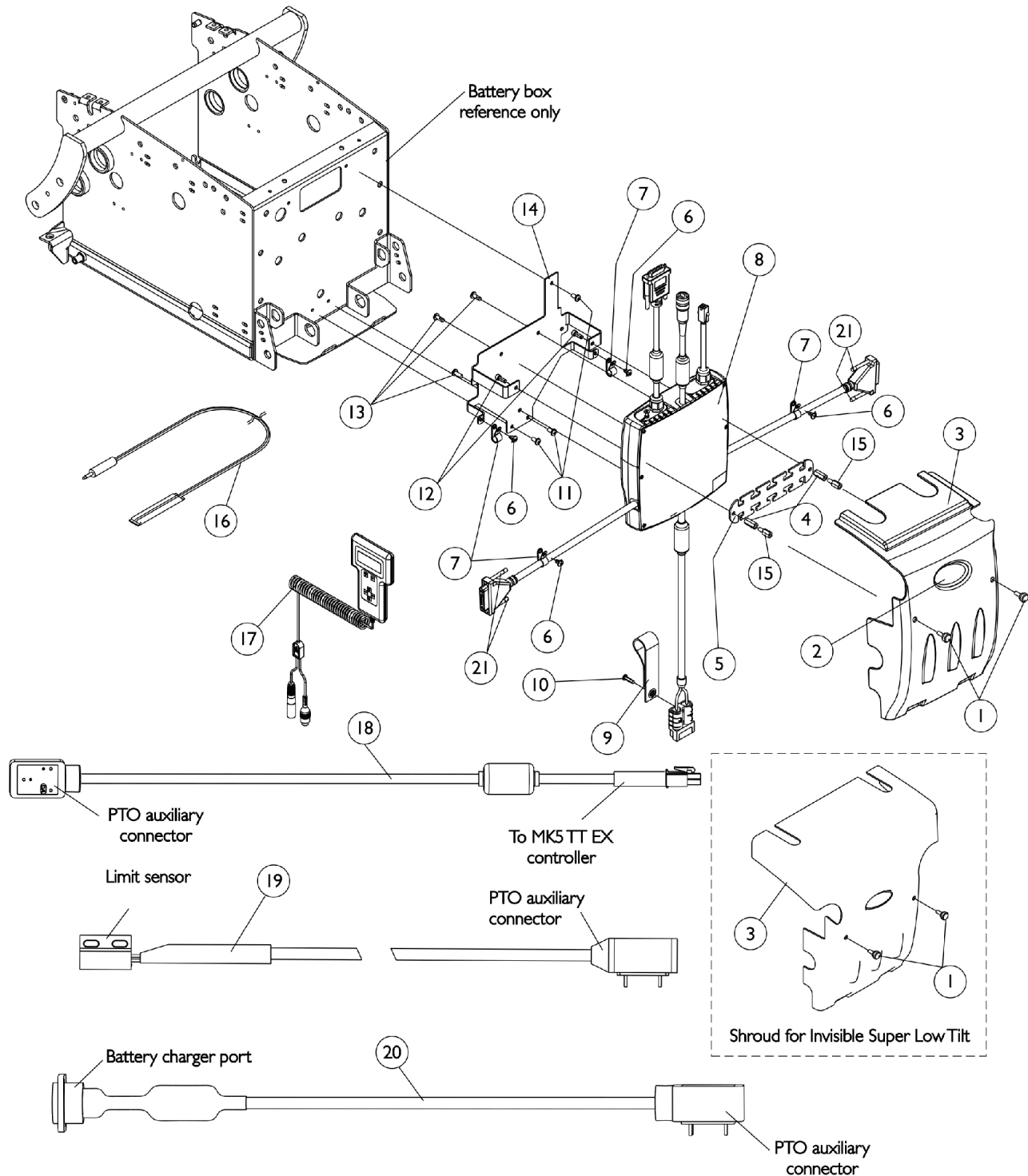


# MK5 TT (TrueTrack) EX Controller, Programmer, Shroud Cover and Hardware

**NOTE:** The MK5 TT (TrueTrack) EX Controller is used to operate a chair with GB (Gearless/Brushless) motors only.



# MK5 TT (TrueTrack) EX Controller, Programmer, Shroud Cover and Hardware

**NOTE: The MK5 TT (TrueTrack) EX Controller is used to operate a chair with GB (Gearless/Brushless) motors only.**

Item Number	Note	Part Number	Description	Quantity Per	
				Package	Assembly
1		1117240	Screw, Thumb (#10-32 x 1/2")	1	2
2		1095489	Decal, Invacare 3-D Logo (2-1/2" L)	1	1
3		1113214-NLA	NLA - Cover with Decal, Controller Shroud	1	1
3	B	1120240-NLA	NLA - Cover with Decal, Controller Shroud	1	1
4		1113342-NLA	NLA - Stand-Off (#10-32 x 3/4")	1	2
5		1117194-NLA	NLA - Strip, Wiring	1	1
6	H	90017X000-NLA	NLA - Screw, Phillips Pan Head (#10-32 x 5/16")	1	4
7	H	1079245-NLA	NLA - Clamp, Cable	1	4
8	F,F1,H, L	1145076-NLA	NLA - See Footnotes - Part is no longer a repairable item	1	1
9		1113331-NLA	NLA - Strap, Battery Plug Pull	1	1
10		1114276	Screw, Phillips Pan Head (#8-16 x 5/8")	1	1
11		1022597	Screw, Phillips Pan Head Tap (#10-32 x 3/8")	1	3
12		1113438-NLA	NLA - 3Screw, Socket Head (#10-32 x 1/2")	1	2
13		1104259	Screw, Phillips Pan Head w/ Patch (#10-32 x 1/2")	1	3
14		1115829-NLA	NLA - Bracket, TDX Controller, Black	1	1
15	D	1120258-NLA	NLA - Stand-Off (10-32 x 1/2")	1	2
16	I	1020818	Switch, Red Flex Ribbon (Tape) Reset	1	1
16	E,J	1123276	Kit, Switch, Black Egg Reset w/ Hook/Loop Adhesive Back Fastener & Attaching Screws (EGSBLK)	1	1
17		1109091-NLA	NLA - Programmer, Remote	1	1
18	A	1119418	Cable, Auxiliary Power	1	1
19	C	1092913-NLA	NLA - Cable, Drive Lockout Sensor	1	1
20	G,G1	1114500-NLA	NLA - Cable Option with Charger Connector	1	1
21		1159217	Package, Thumb Screw (1-1/2" L)	10	1
	E	1095204-NLA	NLA - Cable, Virtual Service, Charger/Modem	1	1
	E	1145761	Instruction Sheet, MK5 TT-EX Controller Installation	1	1
	E,K,K1	1134214	Kit, GB HD Controller Gasket Connector	1	1

# MK5 TT (TrueTrack) EX Controller, Programmer, Shroud Cover and Hardware

**NOTE: The MK5 TT (TrueTrack) EX Controller is used to operate a chair with GB (Gearless/Brushless) motors only.**

- NOTE:
- A - Used with MK5 TT (TrueTrack) EX controller for Powered Seating Systems.
  - B - Used on Super Low Tilt system
  - C - Cable sensor is used when a manual recliner is present
  - D - Item 15 is increased to a quantity of 4 when an Invisible Super Low Tilt is present
  - E - Not Shown
  - F - Kit includes the Controller, Instruction Sheet and a Controller Gasket Kit part #1134214. Part # 1112979 labeled on the controller is listed for reference only, refer to kit #1145076 when ordering. The MK5 TT EX Controller is used for GB Motors only.
  - F1 - Item #18 Power Auxillary Cable is required to function any powered seating system.
  - G - Cable Option with Charger Connector is present when a combination MKIV controller and joystick have been ordered as a "special" on-chair configuration.
  - G1 - When a MKIV joystick is ordered "special" on-chair to adapt to a MK5 EX controller, a (6 pin to 15 pin adapter cable) will be present. A replacement (6 pin to 15 pin adapter cable) must be ordered from ASL (Adaptive Switch Labs) at 1-800-626-8698
  - H - After 6/16/05 the MK5 TTEX Controller motor cables were shortened from approximately 12" to 9". Items 6 and 7 are no longer used after 6/16/05.
  - I - Before 5/24/04
  - J - After 5/23/04 the Egg Reset Switch replaced the Red Flex Ribbon (Tape) Reset Switch
  - K - Kit was created 10/26/07 and attaches to the controller motor cables. Includes 2 ea. GB HD Controller Gasket Connectors, 2 ea. Silicon Lubricant Packets, 1 ea. Instruction Sheet. Individual components are non-saleable.
  - K1 - The kit can retrofit to existing GB HD controllers in the field
  - L - Part #1145076 "Kit, MK5 TT-EX Controller w/ Installation Instruction Sheet" is no longer available for sale. As of 7/24/13 the MK5 TT (TrueTrack) EX Controller is no longer a repairable item.