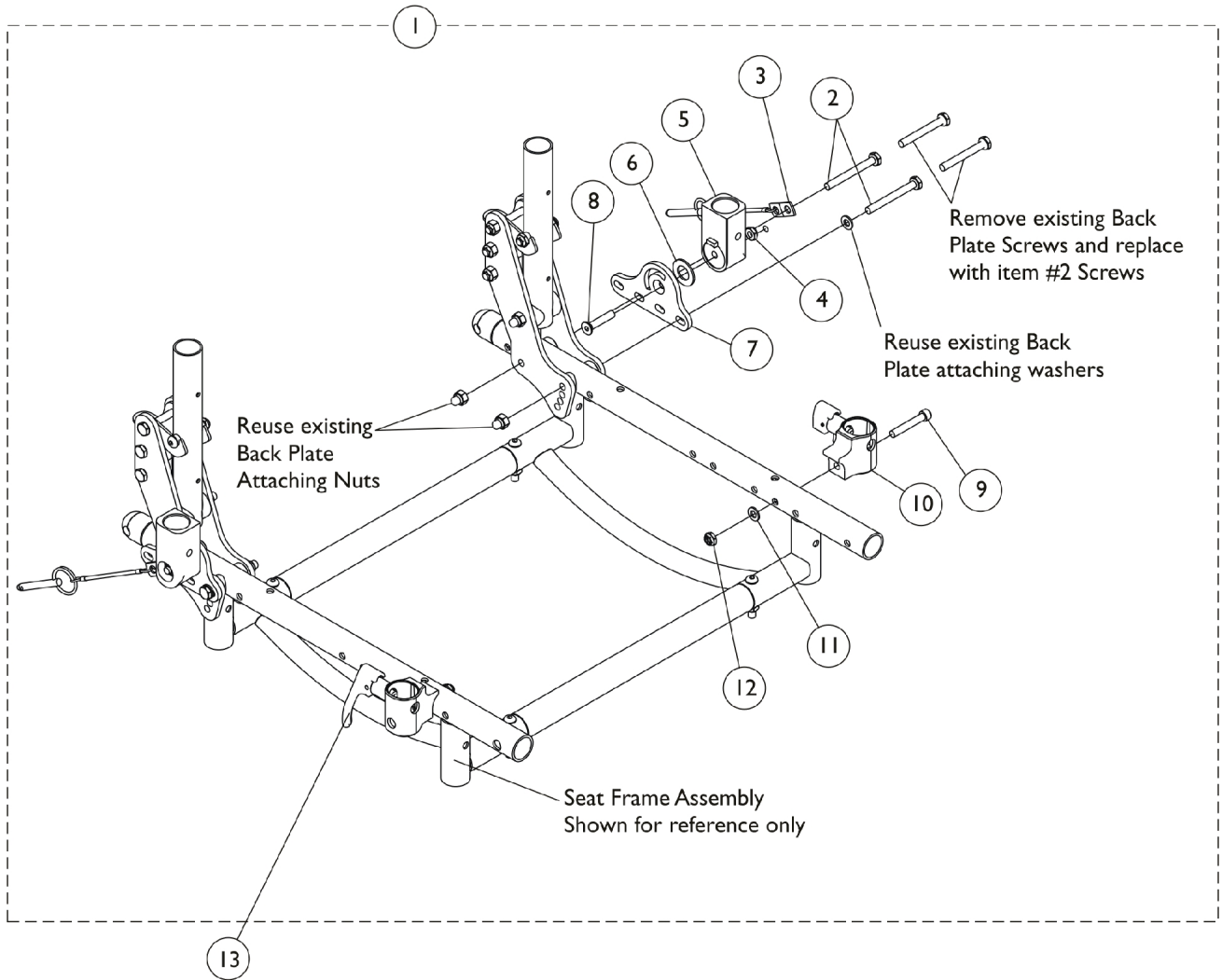


Flip Back Arm Attaching Hardware



Flip Back Arm Attaching Hardware

Item Number	Note	Part Number	Description	Quantity Per	
				Package	Assembly
1	A	1136593-NLA	NLA - Hardware, Flip Back Arm Attaching	1	1
2			Screw, Hex Head (1/4-28 x 2-1/4")	1	4
3			Faspin, Lanyard .25 w/ 4"	1	2
4			Locknut, Thin (1/4-20)	1	2
5			Bracket, Cup, Flip Back Arm, Black	1	2
6			NLA - Washer, Nylon (35/64 x 1 x 1/16")	1	2
7			Bracket, Flip Back Arm - Right	1	1
7			Bracket, Flip Back Arm - Left	1	1
8			Screw, Socket Flat Head (1/4-20 x 1-1/4")	1	2
9			NLA - Screw, Socket Head (1/4-28 x 1-1/2")	1	2
10			Arm Socket Assembly, Black - Right	1	1
10			Arm Socket Assembly, Black - Left	1	1
11			NLA - Washer, Steel (1/4 x 1/2 x 3/64")	1	2
12			Locknut (1/4-28)	1	2
13		7100053	Arm Lock Assembly, Black - Right	1	1
			Handle, Lock, Black - Right	1	1
			Rivet, Tubular	1	2
			Pin, Locking	1	2
			Spring, Arm Lock	1	2
13		7100054	Arm Lock Assembly, Black - Left	1	1
			Handle, Lock, Black - Left	1	1
			Rivet, Tubular	1	2
			Pin, Locking	1	2
			Spring, Arm Lock	1	2

NOTE: A - Includes items 2-12.