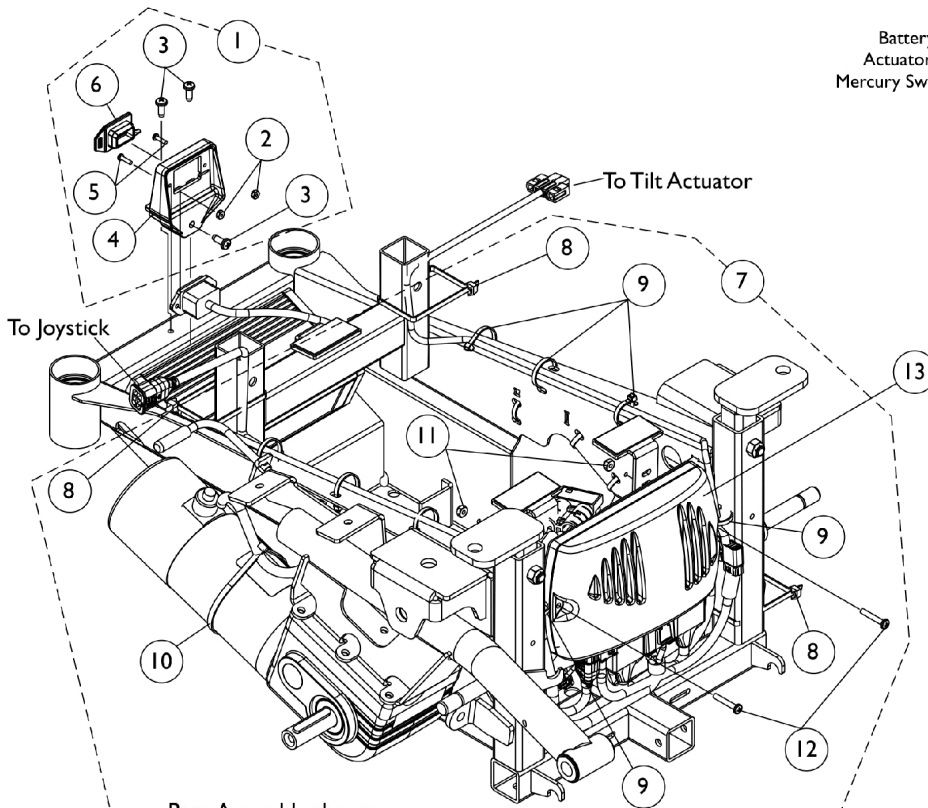
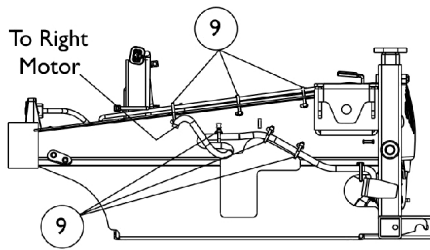


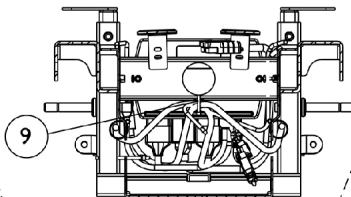
Controller - Programmer & Mtg. Hdwr. - Pronto M51 w/ Formula CG Tilt



Base Assembly shown
for reference only

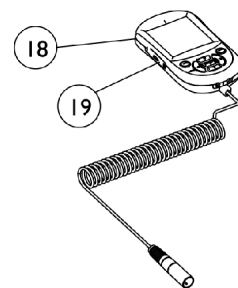
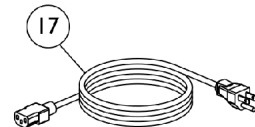
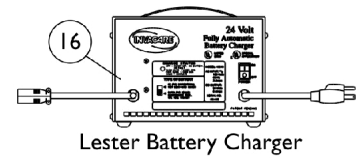
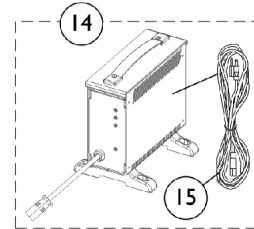
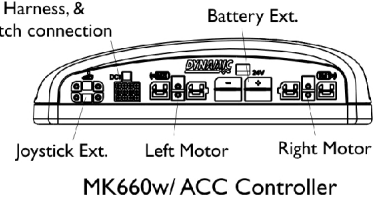


Right Side View Shown



Rear View Shown

Battery Charger,
Actuator Harness, &
Mercury Switch connection



Controller - Programmer & Mtg. Hdwr. - Pronto M51 w/ Formula CG Tilt

Item Number	Note	Part Number	Description	Quantity Per	
				Package	Assembly
1	A	1127301	Kit, Charger Mounting Hardware	1	1
2			Nut, Hex Keps (#4-40)	1	2
3			Screw, Phillips Pan Head Tap (#10-32 x 1/2")	1	3
4			Bracket, Charger Connector, Black	1	1
5			Screw, Phillips Pan Head (#4-40 x 7/16")	1	2
6			Cover, Connector	1	1
7	B	1153344-NLA	NLA - Kit, Controller Mounting Hardware	1	1
8			Tie Wrap (11-1/2" L)	1	3
9			Tie Wrap (5-5/8" L)	1	17
10			Tie Wrap (17-1/2" L)	1	2
11			Locknut (#8-32)	1	2
12			Screw, Phillips Pan Head (#8-32 x 1")	1	2
13		1127270	Controller, MK5 NX w/ ACC/ MK660 w/ ACC	1	1
14	C,D	1123249	Charger, Battery, 8 Amp. 115vac (Off Board) Single Mode Round Plug w/ AC Power Line Cord	1	1
14	C,D	1123249E-NLA	NLA - WARR RPLMT - Charger, Battery, 8 Amp, 115VAC (Off Board) Single Mode Round Plug w/ AC Power Line Cord	1	1
15	G	1089627-NLA	NLA - Cord, AC Power, 115VAC, 2 Prong Off-Board (11' 6" L)	1	1
15		1121086	Cord, AC Power, 115VAC, 3 Prong On-Board (6' 6-1/2" L)	1	1
16	E,H	1053161-NLA	NLA - Charger, Battery, 8 Amp, 115vac, Off Board Dual Mode Round Plug, Lester	1	1
17		1121086	Cord, AC Power, 115VAC, 3 Prong On-Board (6' 6-1/2" L)	1	1
18	F	1139985	Programmer, MK6i Remote	1	1
18	F	1142215	Kit, MK6i Remote Programmer w/ SD Professional Card & Card Holder (1813M6)	1	1
19		1139997	Cover, SD Card Slot	1	1

NOTE: A - Includes items 2-6
 B - Includes items 8-12
 C - Used on Gel Cell or AGM (Absorbed Glass Mat) batteries. For wet cell batteries refer to the Lester 8 amp charger
 D - Includes item 15, AC power cord
 E - Used on Wet Cell Batteries
 F - The MK6i Programmer Manual (1141471) is not included and is strongly recommended the guide be ordered or downloaded from Literature Fulfillment.
 G - No longer available as a service part. Please use 1121086 as its replacement.
 H - Use Battery Charger part number 1123249 as a replacement.