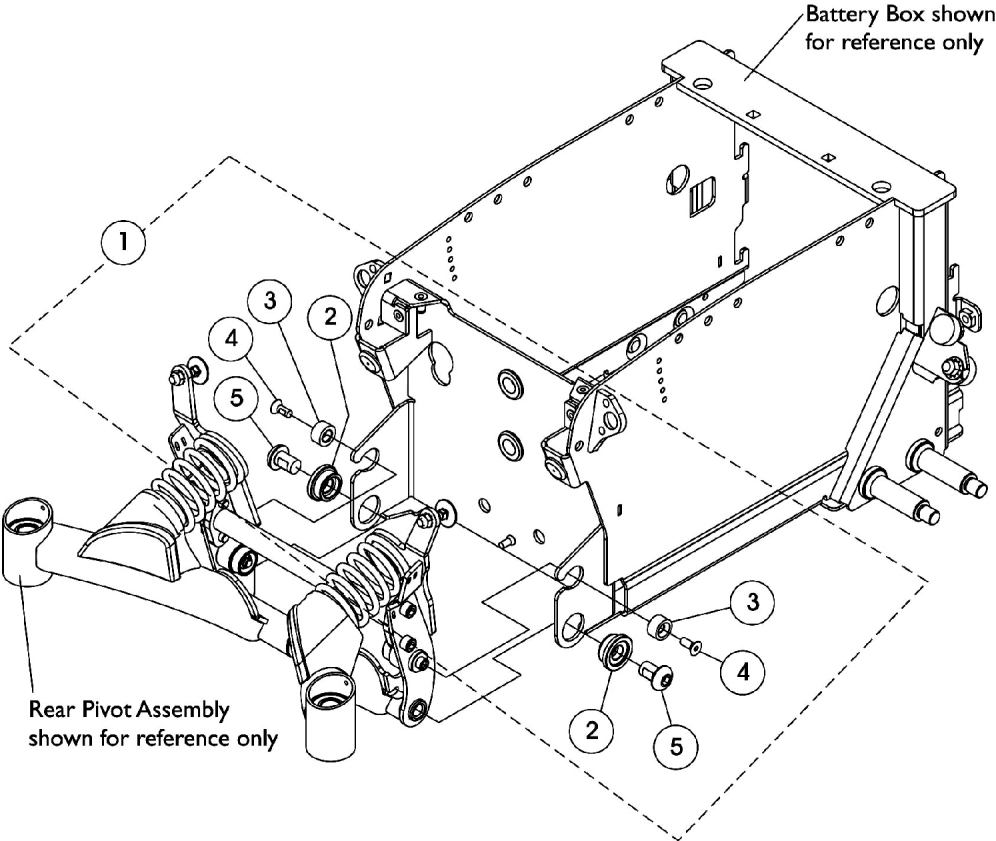


Rear Pivot Assembly Mounting Hardware - Before 9/7/07



Rear Pivot Assembly Mounting Hardware - Before 9/7/07

Item Number	Note	Part Number	Description	Quantity Per	
				Package	Assembly
1	A,B,D	1144668-NLA	Kit, Rear Pivot Assembly Mounting Hardware	1	1
2			NLA - Bushing, Rear Pivot	1	2
3			Spacer, Nylon	1	2
4			Screw, Socket Flat Head w/ Patch (1/4-20 x 5/8")	1	2
5			Screw, Socket Button Head w/ Patch (1/2-13 x 3/4")	1	2
	E	1145066	Kit, Front Head Tube Mounting Hardware	1	1
			Screw, Socket Button Head Cap w/ Patch (1/2-13 x 7/8")	1	2
			Washer, Nylon (1/2 x 7/8 x 1/16")	1	2
	C	8881152028-NL A	NLA - Kit, Rear Pivot Assembly & Mtg. Hdw. Conversion (For 22NF Battery Box)	1	1
	C	8881152029-NL A	NLA - Kit, Rear Pivot Assembly & Mtg. Hdw. Conversion (For GP24/3-22NF Battery Box)	1	1

NOTE: A - Includes items 2-5
 B - No Longer Available. The Rear Pivot Assembly and Mtg. Hwr. Conversion Kit must be ordered.
 C - Not Shown. The conversion kit includes both Rear Pivot Assembly & Rear Pivot Assembly Mounting Hardware dated After 9/6/07
 D - When item #5 part number 1143262 Screw is requested, order the Front Head Tube Mounting Hardware Kit Part number 1145066. The Screws are backward compatible for chairs manufactured Before 9/7/07. The nylon washers are not used.
 E - Not Shown. Use only when a customer is requesting to replace item #5 Socket Button Head Screw w/ Patch. The nylon washers are not used.