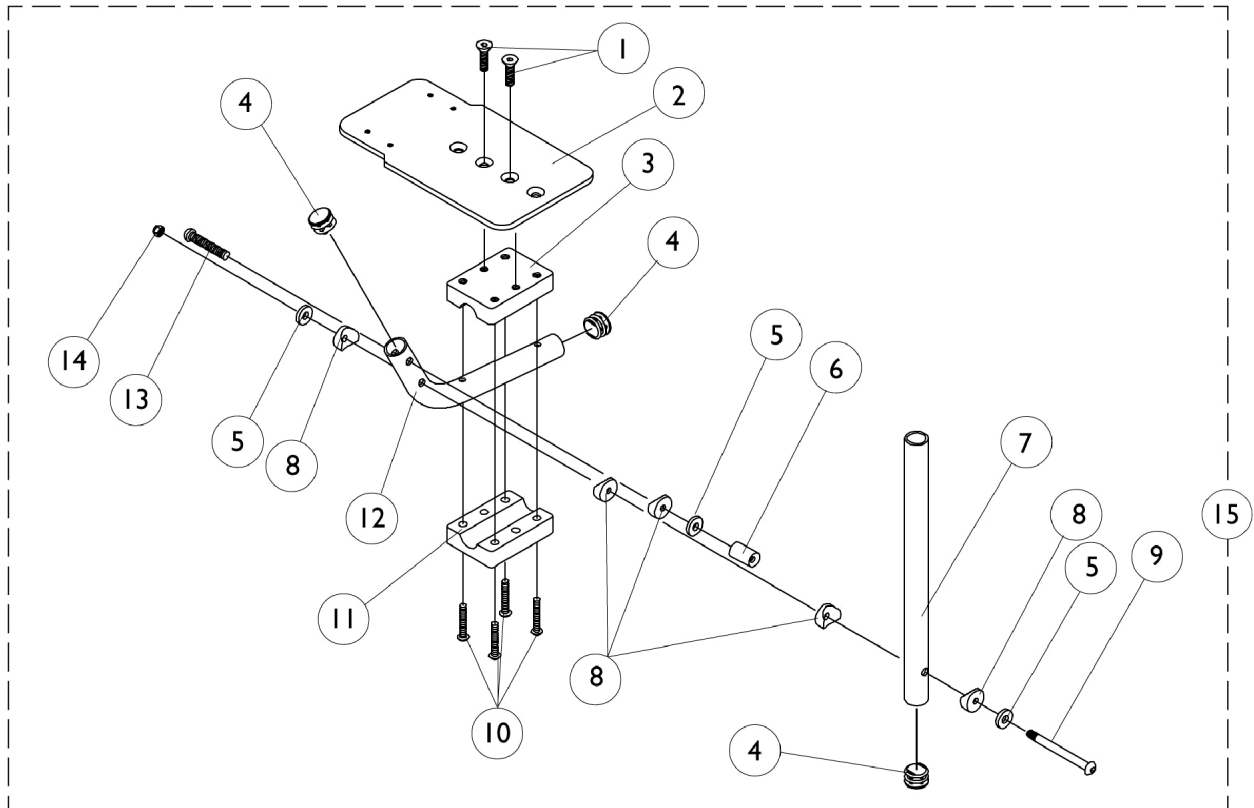


AT5543 Adjustable Angle Footplates

60deg and 70deg Swingaway Supports - Before 3/1/95

NOTE: Heel loops are not included. See footrest and legrest accessories.



AT5543 Adjustable Angle Footplates

60deg and 70deg Swingaway Supports - Before 3/1/95

NOTE: Heel loops are not included. See footrest and legrest accessories.

Item Number	Note	Part Number	Description	Quantity Per	
				Package	Assembly
1		1029545	Screw, Socket Flat Head (1/4-20 x 3/4")	1	2
2	A	1043344-NLA	NLA - Footplate, Black (4-1/4" W x 7-1/2" L) (12-13" W)	1	1
2	B	1044080-NLA	NLA - Footplate, Black (5-1/4" W x 7-1/2" L) (14-16" W)	1	1
3		1027626-NLA	NLA - Half Clamp, Threaded	1	1
4		1027097	Plug Button, Black (3/4")	1	3
5		1018739	Washer (1/4 x 5/8 x 3/32")	1	2
6		1028417-NLA	NLA - Cam, Adjustment	1	1
7		1120384-NLA	NLA - Tube, Pivot/Slide, Straight - Alum. (9-7/8" L)	1	1
8		1025457	Spacer, Coved (1/4 x 3/4 x 11/32")	1	4
9		1030952	Screw, Shoulder Hex Socket Head (1/4" x 2", #10-24)	1	1
10		1009837	Screw, Socket Button Head (1/4-20 x 1")	1	4
11		1027627-NLA	NLA - Half Clamp, Non-Threaded	1	1
12		1029428-NLA	NLA - Tube, Footrest, Black	1	1
13		1008495	Screw, Socket Button Head (1/4-20 x 1-1/2")	1	1
14		7930333	Locknut (1/4-20)	25	1
15	A,C	1043192-NLA	NLA - Hardware, Footplate Assembly - Right	1	1
15	A,C	1043193-NLA	NLA - Hardware, Footplate Assembly - Left	1	1
15	B,C	1043195-NLA	NLA - Hardware, Footplate Assembly - Right	1	1
15	B,C	1043196-NLA	NLA - Hardware, Footplate Assembly - Left	1	1
NOTE: A - 12"-14" Wide B - 15"-16" Wide C - For complete adjustable angle footplates see "AT5543 Adjustable Angle Footplates - After 2/28/95" page.					