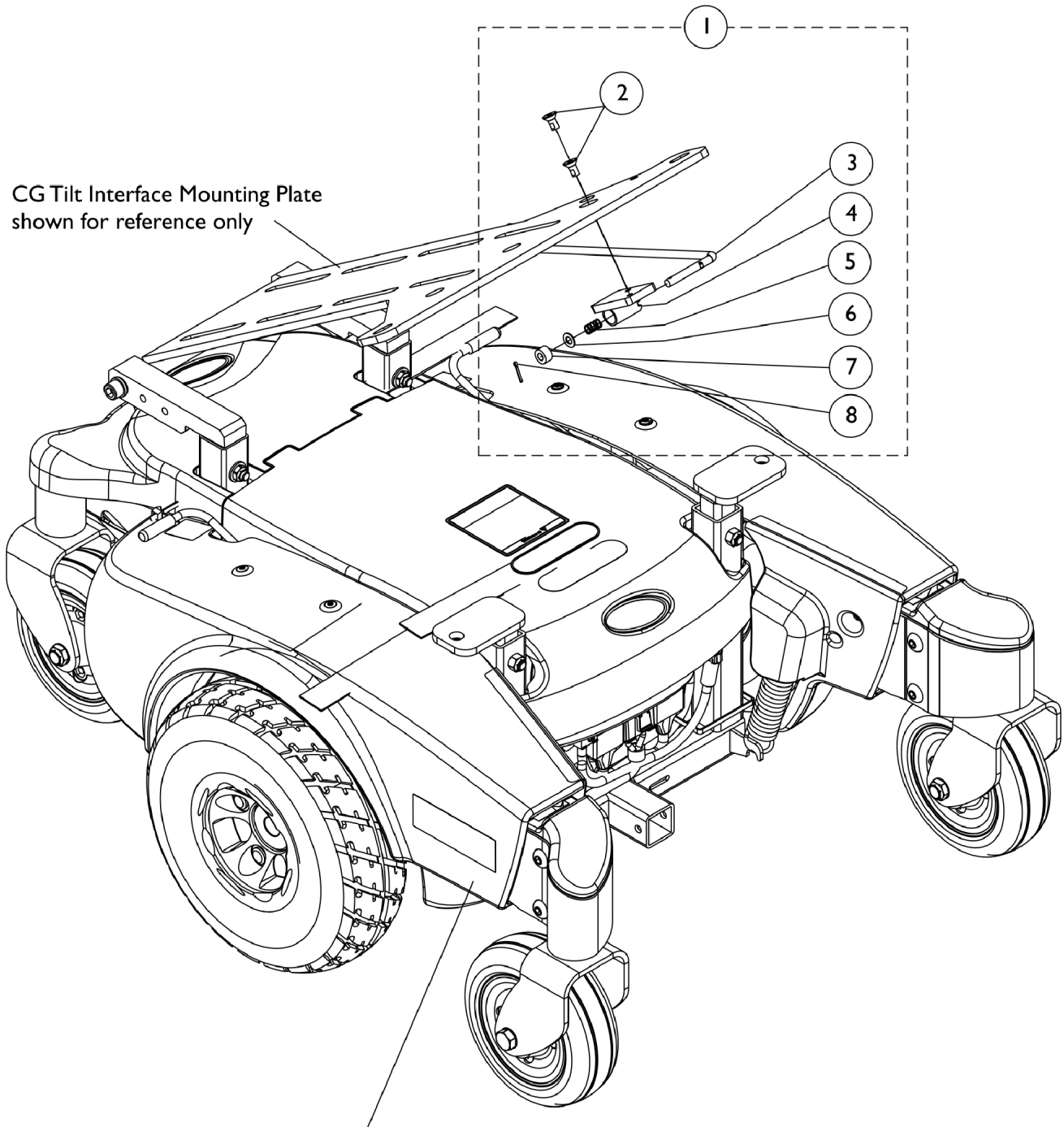


# Prop Rod Assembly



CG Tilt Interface Mounting Plate  
shown for reference only

Pronto M51 Base Assembly  
shown for reference only

## Prop Rod Assembly

Item Number	Note	Part Number	Description	Quantity Per	
				Package	Assembly
1	A	1150898-NLA	NLA - Kit, Prop Rod Assembly	1	1
2			NLA - Screw, Socket Flat Head w/ Patch (1/4-20X1/2")	1	2
3			Rod, Prop	1	1
4			Bracket, Prop Rod	1	1
5			Spring, Arm Lock	1	1
6			Washer, Nylon (1/4 x 1/2 x 1/32")	1	1
7			Washer, Nylon (1/4 x 1/2 x 9/32")	1	1
8			NLA - Pin, Cotter (5/64 x 1/2")	1	1

NOTE: A - Includes items 2-8