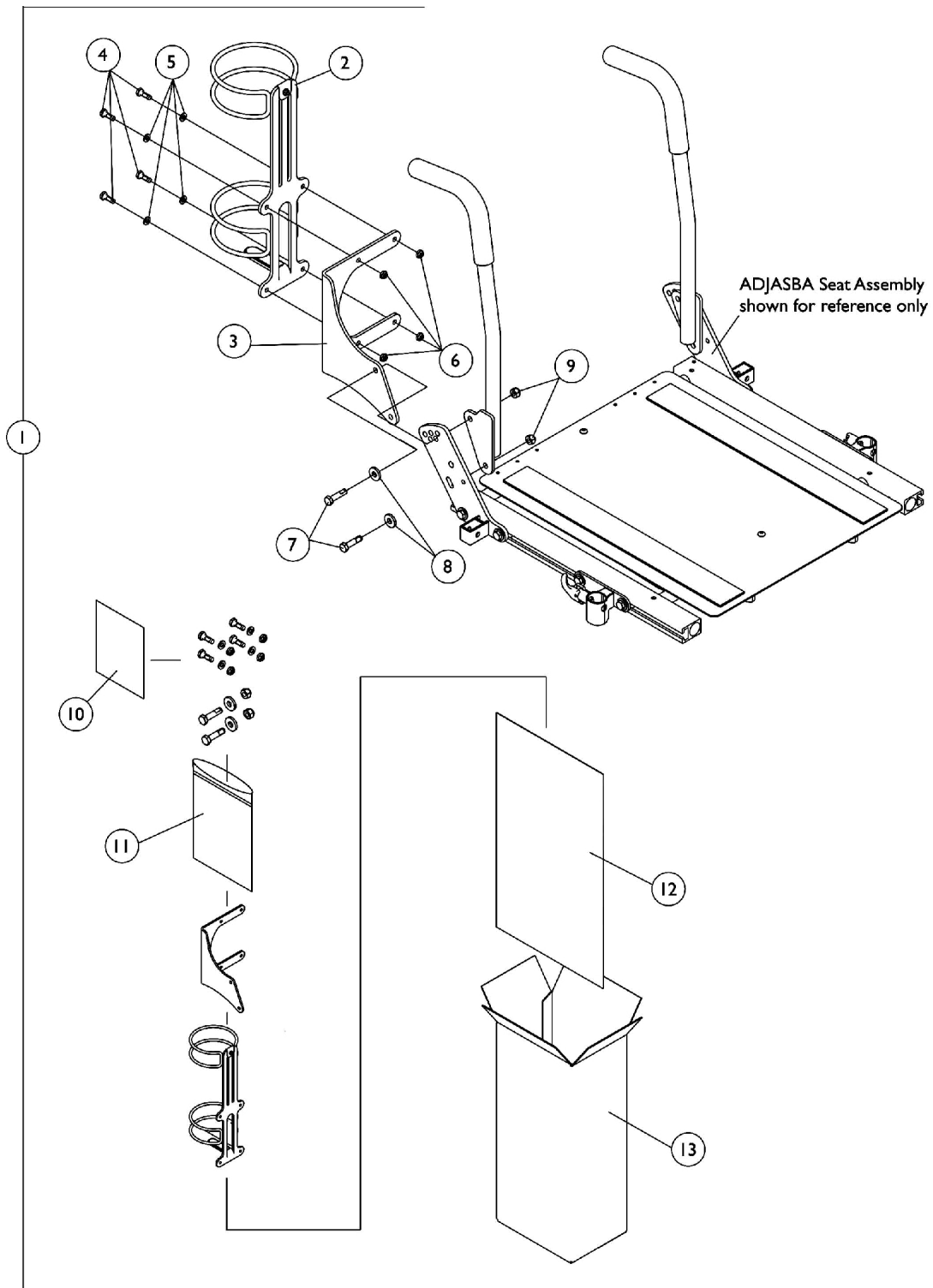


# Oxygen Holder Assembly Kit

## ADJASBA Seats

**NOTE:** Oxygen holder is not available on recliner options and the 12"-16" wide TDX SPREE ADJASBA Seat Frame



# Oxygen Holder Assembly Kit

## ADJASBA Seats

**NOTE: Oxygen holder is not available on recliner options and the 12"-16" wide TDX SPREE ADJASBA Seat Frame**

| Item Number                   | Note | Part Number | Description  | Quantity Per |          |
|-------------------------------|------|-------------|--|--------------|----------|
|                               |      |             |  | Package      | Assembly |
| 1                             | A    | 1135504     | Kit, Oxygen Holder Assembly For ADJASBA Seats      | 1            | 1        |
| 2                             |      |             | Holder, Oxygen                                     | 1            | 1        |
| 3                             |      |             | Bracket, Oxygen Holder (ASBA and ADJASBA Seats)    | 1            | 1        |
| 4                             |      |             | Screw, Hex Head w/ Patch (1/4-20 x 3/4")           | 1            | 4        |
| 5                             |      |             | Washer (1/4 x 1/2 x 1/16")                         | 1            | 4        |
| 6                             |      |             | Locknut (1/4-20)                                   | 1            | 4        |
| 7                             |      |             | Screw, Hex Head w/ Patch (5/16-18 x 1-1/4")        | 1            | 2        |
| 8                             |      |             | Washer, Flat (21/64 x 53/64 x 7/64")               | 1            | 2        |
| 9                             |      |             | Locknut (5/16-18)                                  | 1            | 2        |
| 10                            |      |             | Instruction Sheet, Oxygen Holder For ADJASBA Seats | 1            | 1        |
| 11                            |      |             | NLA - Bag, Poly Zip-Lip (8-3/4" L x 6" W)          | 1            | 1        |
| 12                            |      |             | NLA - Bag, Poly (26" L x 15" W)                    | 1            | 1        |
| 13                            |      |             | NLA - Carton, Shipper                              | 1            | 1        |
| NOTE: A - Includes items 2-13 |      |             |  |              |          |