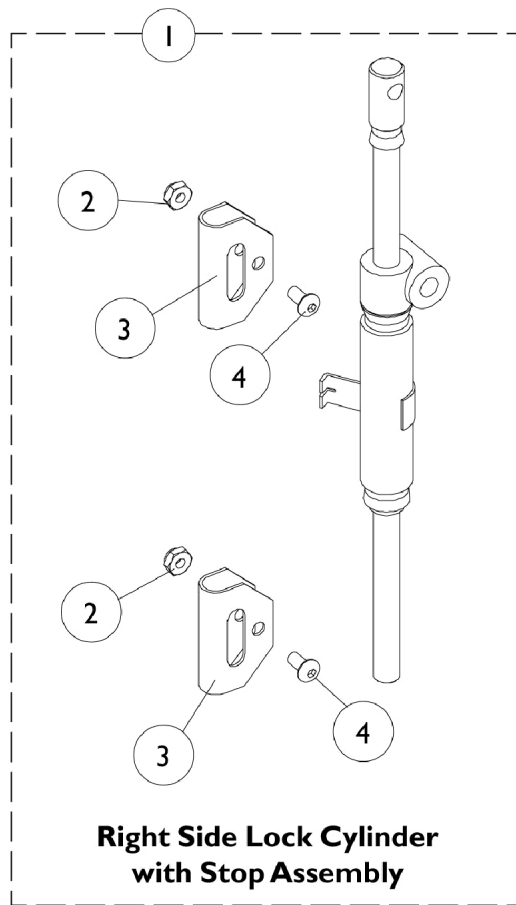
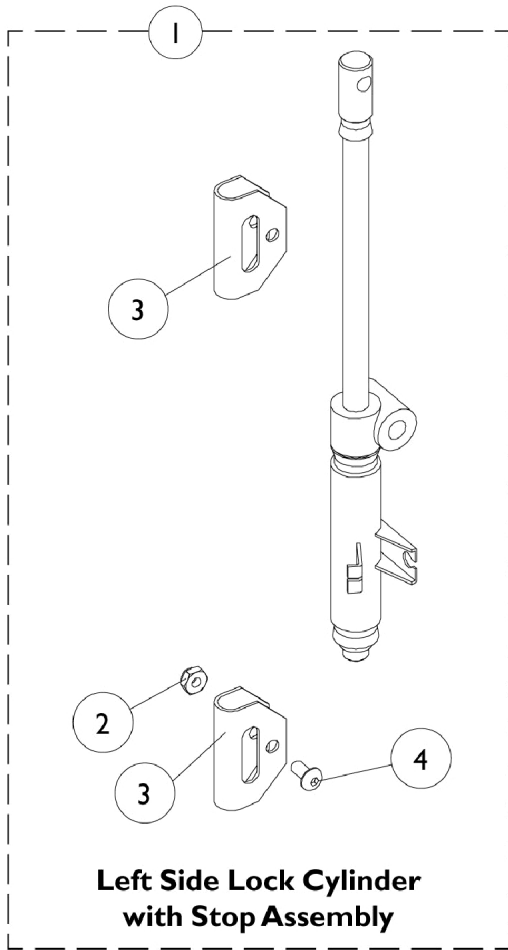


Lock Cylinder with Stop Assembly



Item Number	Note	Part Number	Description	Quantity Per	
				Package	Assembly
1		1027145	Lock Cylinder with Stop Assembly - Right	1	1
1		1038233	Lock Cylinder with Stop Assembly - Left	1	1
2	A	7930332-NLA	NLA - Locknut, High Profile (#10-32)	25	2
3		1025329-NLA	NLA - Bracket, Stop	1	2
4	A	1025354-NLA	NLA - Screw, Socket Button Head (#10-32 x 3/8")	1	2

NOTE: A - Left side includes 1