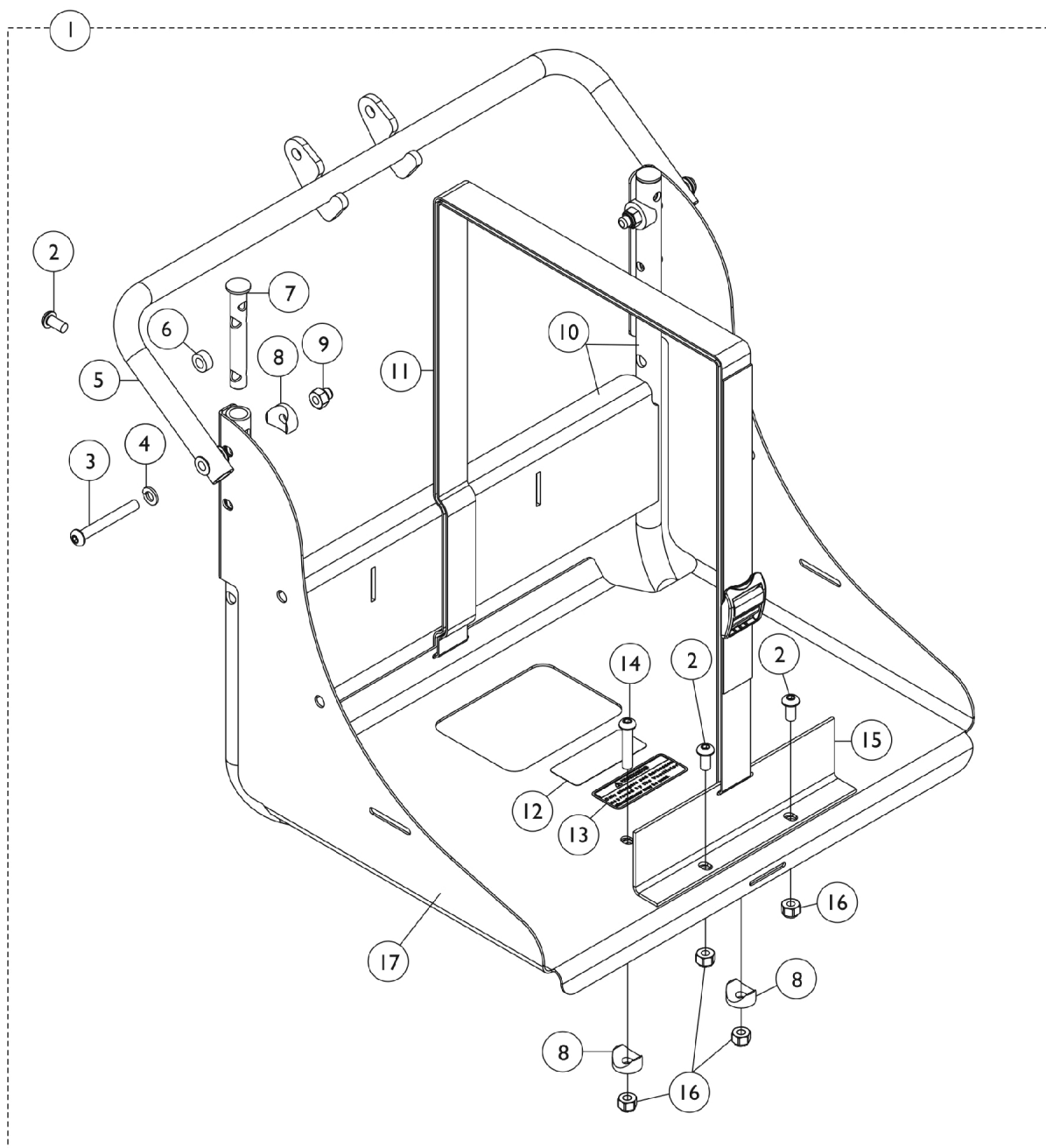


## Vent Tray Assembly without Mounting Hardware

**NOTE:** Vent Option is excluded from a Formula CG Contoura Tilt Only System. Minimum back cane height must be 20" high. Contoura Tilt Only back canes are 18" high. A Double Spreader Bar is required to install a Vent Tray Option to a Tilt Only System. TDX SP/SR models require a GP24/3-22NF WIDE Battery Box because the 22NF NARROW Battery Box or Elevate Option are excluded. When a Vent Tray Assembly is ordered for the first time in the field for 3G Storm Series, the chair must be returned to Invacare for installation. Call the Technical Service Department for assistance at 1-800-832-4707. For TDX SP/SR models, refer to page titled "Vent Tray Kits". Vent Tray is excluded from 3G Storm Series and TDX SP/SR model wheelchairs with TRRO option.



## Vent Tray Assembly without Mounting Hardware

**NOTE:** Vent Option is excluded from a Formula CG Contoura Tilt Only System. Minimum back cane height must be 20" high. Contoura Tilt Only back canes are 18" high. A Double Spreader Bar is required to install a Vent Tray Option to a Tilt Only System. TDX SP/SR models require a GP24/3-22NF WIDE Battery Box because the 22NF NARROW Battery Box or Elevate Option are excluded. When a Vent Tray Assembly is ordered for the first time in the field for 3G Storm Series, the chair must be returned to Invacare for installation. Call the Technical Service Department for assistance at 1-800-832-4707. For TDX SP/SR models, refer to page titled "Vent Tray Kits". Vent Tray is excluded from 3G Storm Series and TDX SP/SR model wheelchairs with TRRO option.

Item Number	Note	Part Number	Description	Quantity Per	
				Package	Assembly
1	A	1146329-NLA	NLA - Vent Tray Assembly	1	1
2			NLA - Screw, Socket Button Head (1/4-20 x 1/2")	1	4
3			NLA - Screw, Socket Button Head (1/4-20 x 2")	1	2
4			Lockwasher, Split (1/4")	1	2
5			Vent Tray Hanger Assembly	1	1
6			NLA - Spacer	1	2
7			NLA - Plug, Slide Tube	1	2
8			Spacer, Coved (1/4 x 3/4 x 11/32")	1	4
9			Nut, Hex with Nylon Cap (1/4-20)	1	2
10			NLA - Frame, Vent Tray, Upper Support, Black	1	1
11			NLA - Strap and Buckle Assembly	1	1
12			Label, Warning	1	1
13			NLA - Decal, Warning, Approved Charger and Harness	1	1
14			Screw, Socket Button Head (1/4-20 x 1-1/4")	1	2
15			NLA - Bracket, Vent Tray, Black	1	1
16			Locknut (1/4-20)	1	4
17			NLA - Tray, Vent	1	1
NOTE: A - Includes items 2-17					