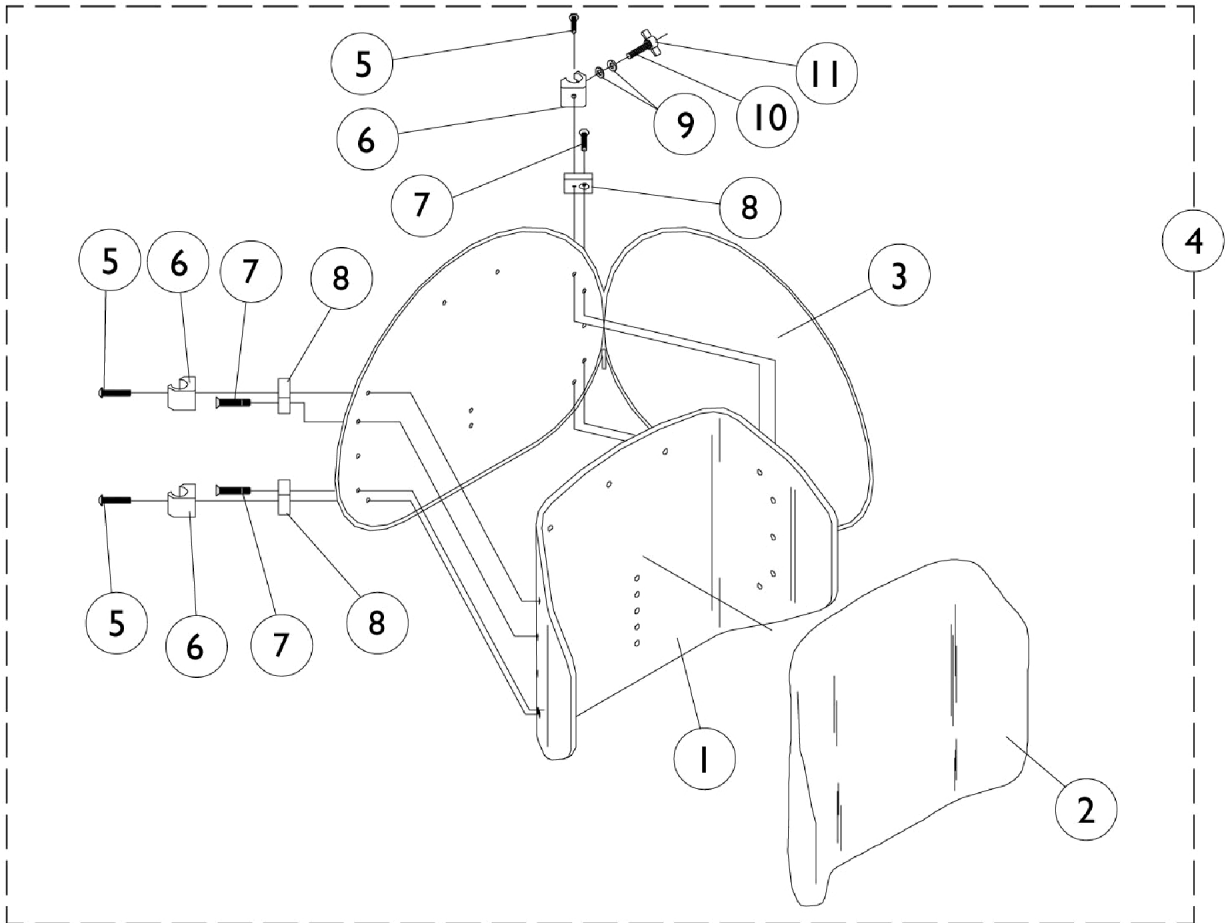


# Profile Back Assembly (Fixed)



## Profile Back Assembly (Fixed)

| Item Number  | Note | Part Number | Description   | Quantity Per |          |
|--|------|-------------|---|--------------|----------|
|  |      |             |   | Package      | Assembly |
| 1-4  |      | See Chart   | Item #'s 1-4 Profile Back Assembly (Fixed)                            | 1            | 1        |
| 5  | B    | 0052906-NLA | NLA - Screw, Socket Button Head (1/4-20 x 3/4")                       | 1            | 4        |
| 5  | C    | 0051206-NLA | NLA - Screw, Machine, Hex Socket, Button Head (1/4-20 x 1-1/4)        | 1            | 4        |
| 6  | B    | 0190500-NLA | NLA - Block, Glide (16", 18" and 20" Wide)                            | 1            | 4        |
| 6  | C    | 0190600-NLA | NLA - Block, Glide (17" and 19" Wide)                                 | 1            | 4        |
| 7  |      | 1081834-NLA | NLA - Screw, Socket Flat Head (1/4-20 x 1-1/4")                       | 1            | 4        |
| 8  |      | 1081830-NLA | NLA - Spacer, Profile Back (1-3/4" Long x 1-9/32 High x 23/32" Thick) | 1            | 4        |
| 9  |      | 0050100-NLA | NLA - Washer, Nylon Flat (1/4 x 1/2 x 1/16")                          | 1            | 4        |
| 10   |      | 7930304-NLA | NLA - Screw, Socket Head (1/4-20 x 1-1/4")                            | 25           | 2        |
| 11   |      | 0226500-NLA | NLA - Knob, Tee   | 1            | 2        |
|  | A,D  | 0143900-NLA | NLA - Flap, Back Pan - Tarsys   | 1            | 1        |
|  | A,E  | 0144000-NLA | NLA - Flap, Back Pan - Tarsys   | 1            | 1        |
|  | A,F  | 0144100-NLA | NLA - Flap, Back Pan - Tarsys   | 1            | 1        |
| NOTE: A - Not Shown.<br>B - 16,18, 20" Wide<br>C - 17, 19" Wide<br>D - 16-17" Wide<br>E - 18-19" Wide<br>F - 20-22" Wide |      |             |   |              |          |

### Item #'s 1-4 Back

| Back Material Width x Height  | Overall Back Height | 1. Back Pan | 2. Back Foam | 3. Back Cover | 4. Back Assembly w/ Fixed Hardware |
|---|---------------------|-------------|--------------|---------------|------------------------------------|
| 16" x 16"   | 20"-21" H           | 0133019-NLA | 0259220-NLA  | 0276800-NLA   | 1081839                            |
| 17" x 16"   | 20"-21" H           | 0133019-NLA | 0259220-NLA  | 0276800-NLA   | 1081840                            |
| 18" x 16"   | 20"-21" H           | 0133119-NLA | 0259120-NLA  | 0276900-NLA   | 1081841                            |
| 19" x 16"   | 20"-21" H           | 0133119-NLA | 0259120-NLA  | 0276900-NLA   | 1081842-NLA                        |
| 20" x 16"   | 20"-21" H           | 0133219-NLA | N/A          | 0277000-NLA   | 1081843-NLA                        |
| 16" x 18"   | 22"-24" H           | 0133319-NLA | N/A          | 0277100       | 1081844                            |
| 17" x 18"   | 22"-24" H           | 0133319-NLA | N/A          | 0277100       | 1081845-NLA                        |
| 18" x 18"   | 22"-24" H           | 0133419-NLA | 0259020-NLA  | 0277200       | 1081846                            |
| 19" x 18"   | 22"-24" H           | 0133419-NLA | 0259020-NLA  | 0277200       | 1081847                            |
| 20" x 18"   | 22"-24" H           | 0133519     | N/A          | 0277300-NLA   | 1081848                            |
| Back foam listed as N/A, is fabricated to the back pan ans isn't sold seperately. |                     |             |              |               |                                    |