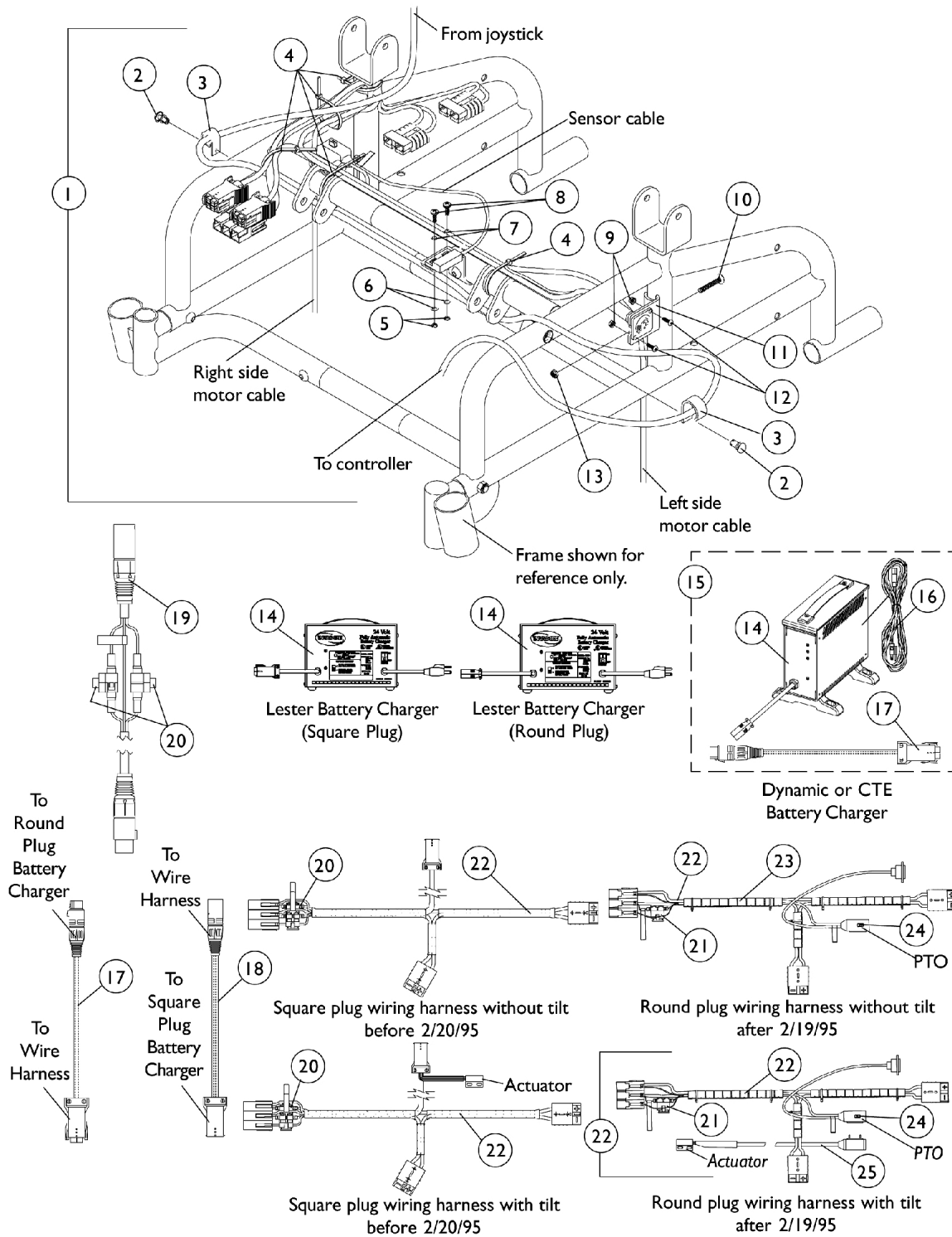


Wiring Harnesses and Chargers

MKIV Electronics



Wiring Harnesses and Chargers

MKIV Electronics

Item Number	Note	Part Number	Description	Quantity Per	
				Package	Assembly
1	C	1052246-NLA	NLA - Hardware, Harness Mounting	1	1
2		1022014-NLA	NLA - Rivet, Snap	1	2
3		50000X403-NLA	NLA - Clamp, Black Plastic	1	1
4		1095502-NLA	NLA - Package, Tie Wrap (11-1/2" L)	10	5
5		1005889	NLA - Locknut (#4-40)	1	2
6		1008525-NLA	NLA - Washer, Internal Tooth Lock (#4-40)	1	2
7		1011011-NLA	NLA - Washer, Plain (1/8 x 5/16 x 1/32")	1	2
8		1027704-NLA	NLA - Screw, Phillips Pan Head (#4-40 x 3/8")	1	2
9		P0870X000	Nut, Hex Keps (#4-40)	1	2
10		1008495	Screw, Socket Button Head (1/4-20 x 1-1/2")	1	1
11		1053837-NLA	NLA - Bracket, Charger Connector, Black	1	1
12		1021742	Screw, Phillips Pan Head (#4-40 x 1/2")	1	2
13		1025736	Locknut (1/4-20)	1	1
14	A	1053163-NLA	NLA - Charger, Battery, 8 Amp, 115vac, Off Board, Dual Mode, Square Plug, Lester	1	1
14	A,M	1053161-NLA	NLA - Charger, Battery, 8 Amp, 115vac, Off Board Dual Mode Round Plug, Lester	1	1
14		1085678-NLA	NLA - Charger, Battery, 8 Amp. 115vac, Off Board, Dual Mode, Round Plug w/ AC Power Line Cord, Dynamic	1	1
14	J	1123249	Charger, Battery, 8 Amp. 115vac (Off Board) Single Mode Round Plug w/ AC Power Line Cord	1	1
14	J	1123249E-NLA	NLA - WARR RPLMT - Charger, Battery, 8 Amp, 115VAC (Off Board) Single Mode Round Plug w/ AC Power Line Cord	1	1
15	I,I1	1062556-NLA	NLA - Battery Charger, 8 Amp. 115vac (Off Board) Single Mode Round Plug w/ AC Power Line Cord and Square Plug Adapter Cable, CTE Corp.	1	1
16	L	1089627-NLA	NLA - Cord, AC Power, 115VAC, 2 Prong Off-Board (11' 6" L)	1	1
16		1121086	Cord, AC Power, 115VAC, 3 Prong On-Board (6' 6-1/2" L)	1	1
17	K	1053831-NLA	NLA - Cable, Adapter	1	1
18		See Note	See Footnote	1	1
19		1083929-NLA	NLA - Cable, Charger Extension, Round Plug (24" L)	1	1
20	F,G	1098892-NLA	NLA - Fuse - Buss ATC-15 (15 AMP)	1	1
20	H	1090117-NLA	NLA - Fuse - Buss Mini ATM-15 (15 AMP)	1	2
21	G	1101099-NLA	NLA - Fuse, Buss ATC-20 (20 AMP)	1	1
21	H	1119230-NLA	NLA - Fuse - Buss Mini ATM-20 (20 AMP)	1	1
22	D	1036391-NLA	NLA - Harness, Wiring, Square Charger Plug, Tilt	1	1
22	D	1040179-NLA	NLA - Harness, Wiring, Square Charger Plug, Non-Tilt	1	1
22	B,E	1053833-NLA	NLA - Harness, Wiring, Round Charger Plug, Tilt	1	1
22	B,E	1053836-NLA	NLA - Harness, Wiring, Round Charger Plug, Non-Tilt	1	1
23		1090357-NLA	NLA - Wrap, Slit Wire Harness (1/2" O.D., 36" Long Cut To Length)	1	1
24		1090117-NLA	NLA - Fuse - Buss Mini ATM-15 (15 AMP)	1	1

Wiring Harnesses and Chargers

MKIV Electronics

Item Number	Note	Part Number	Description	Quantity Per	
				Package	Assembly
25		1092913-NLA	NLA - Cable, Drive Lockout Sensor	1	1
NOTE: A - On 7/18/01 Lester 8 amp. battery chargers were reinstated. The square plug model was offered on chairs made before 2/20/95. B - On 8/26/02 a (PTO) power take off connector was added to the wire harness. Item 24 sensor cable is included with the tilt wire harness part number 1053833. C - Includes items 2-13 D - Before 2/20/95 E - After 2/19/95 F - The wire harness takes a quantity of 2 fuses G - Before 4/1/03 H - After 3/31/03 I - CTE charger introduced and standard on-chair 4/1/04. Used on Gel Cell or AGM (Absorbed Glass Mat) batteries. For wet cell batteries refer to the Lester charger. I1 - CTE charger looks exactly the same as Dynamic's charger except for the company name that is silk screened on the narrow side panel, where the charger plug is (hard wired) attached. Serial number starts with 04A00000001. J - CTE charger without the square plug adapter cord is for chairs equipped with a round plug charger connector K - No longer available as a service part. L - No longer available as a service part. Please use 1121086 as its replacement. M - Use Battery Charger part number 1123249 as a replacement.					