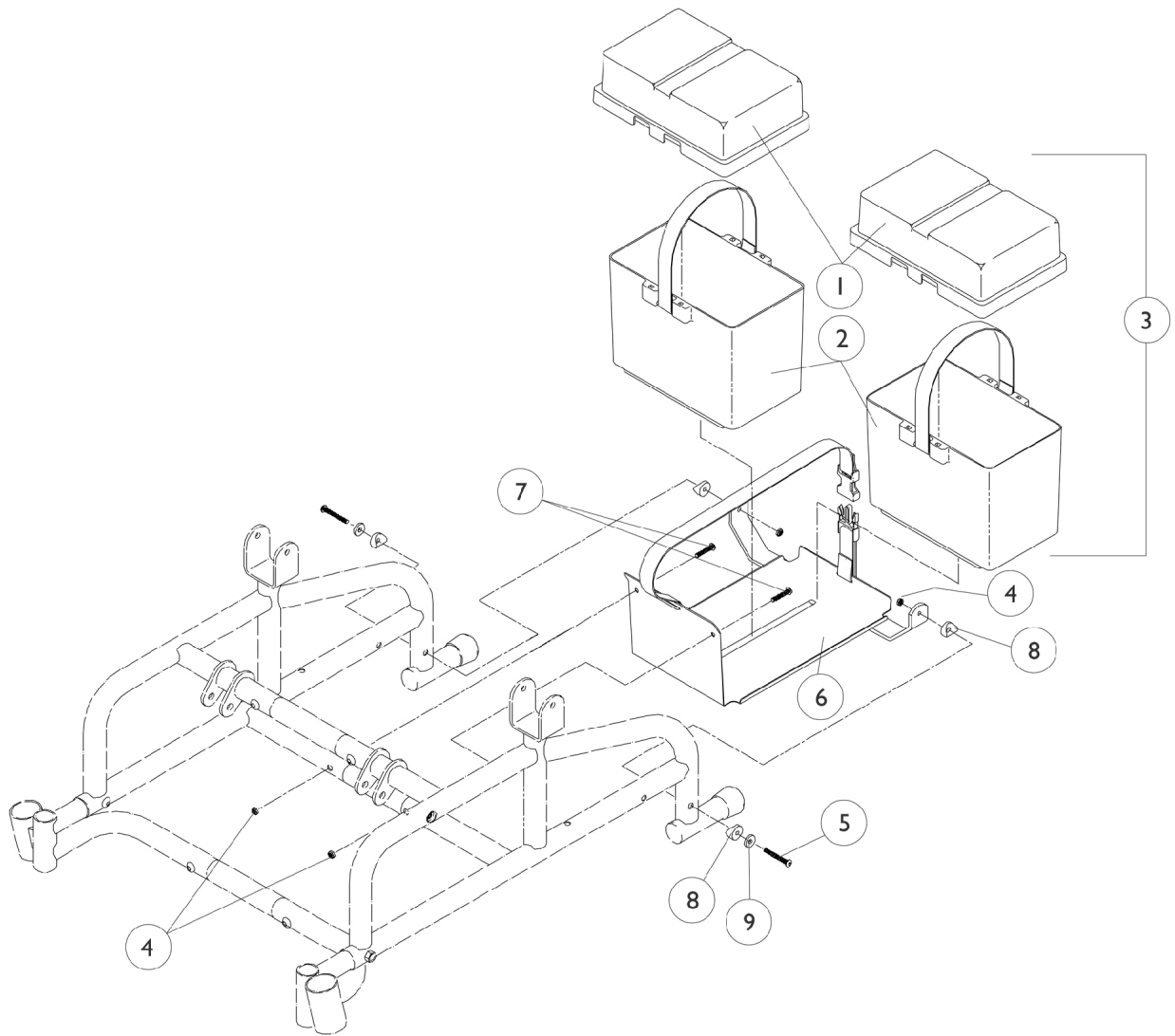


Battery Boxes and Tray Assembly

MKIV Electronics



Battery Boxes and Tray Assembly MKIV Electronics

Item Number	Note	Part Number	Description	Quantity Per	
				Package	Assembly
1	A,B,C, F	1038223-NLA	NLA - Battery Box Top Assembly	1	2
2	A,F	1057944	Battery Box Bottom with Strap, 22NF	1	2
3	F	1064505-NLA	NLA - Battery Box Assembly	1	2
4		7930323-NLA	NLA - Package, Locknut (1/4-20)	25	4
5		7930301-NLA	NLA - Package, Button Head Cap Screw (1/4-20 x 1-3/4")	25	2
6		1036044-NLA	NLA - Tray, Battery with Buckle Strap	1	1
7		1008432	Screw, Socket Button Head (1/4-20 x 1-1/4")	1	2
8		40157X019-NLA	NLA - Spacer, Coved (1/4 x 7/8 x 7/16")	1	4
9		1018739	Washer (1/4 x 5/8 x 3/32")	1	2
	B,E,G	50000X166-NLA	NLA - Fuse - Buss 2-1/4" L (60 AMP)	1	2
	E,H	1089385	Fuse, MIDI (Non-G/B & G/B) (80 AMP)	1	2
	D,E	1058618-NLA	NLA - Hardware, Battery Terminal, 22NF Batteries (Pair)	2	1

NOTE: A - Battery boxes built before 8/1/96 are no longer available. When replacing a battery box top or bottom for chairs built before 8/1/96, both parts must be replaced. See item 3.
B - As of 1/15/99 the battery harness fuse changed from a Bussman 60 AMP. to a MIDI 80 AMP. fuse. This battery box top is compatible for all chairs manufactured before 11/5/99 and must be ordered whenever a replacement Bussman 60 AMP. fuse is requested.
C - It is recommended that terminal hdwr. part #1058618 for 22NF batteries be ordered when a new battery box top is ordered.
D - Hardware includes battery clamps, battery clamp caps (red and black), small battery terminal caps (red and black), 1/4-20 x 7/8" hex flange screws, 1/4-20 hex flange nuts, cable ties and locking tab washers for two batteries.
E - Not Shown.
F - After 7/31/96
G - Before 11/5/99
H - After 11/4/99