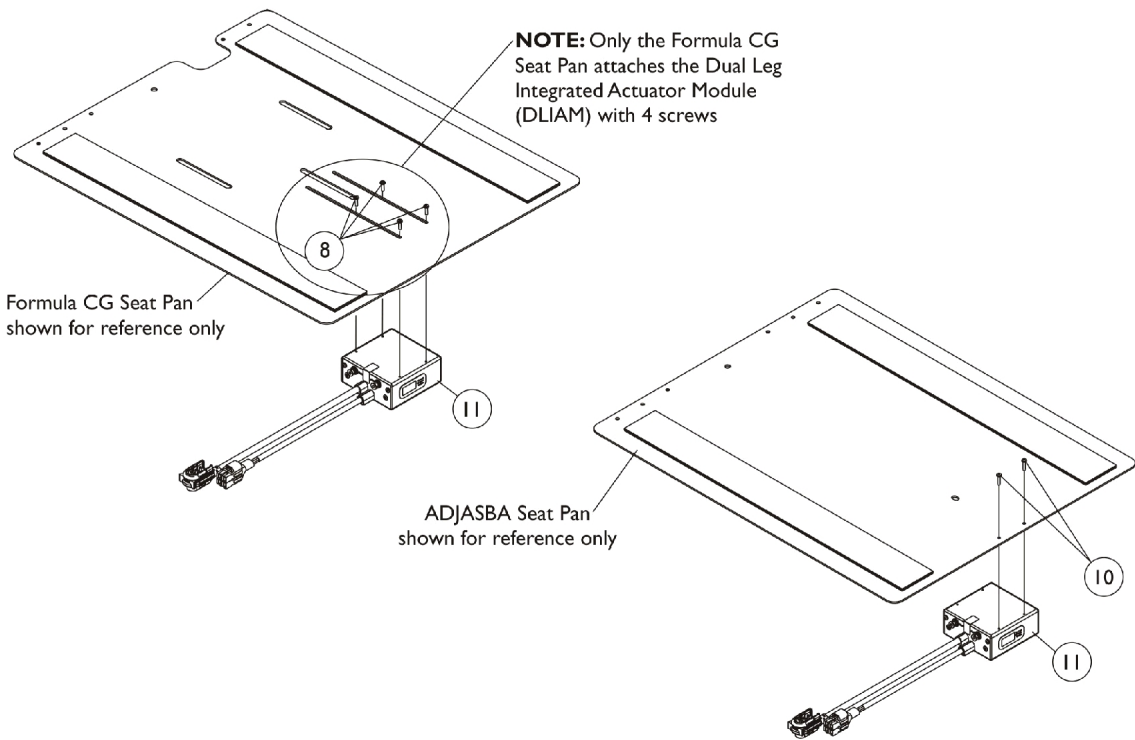
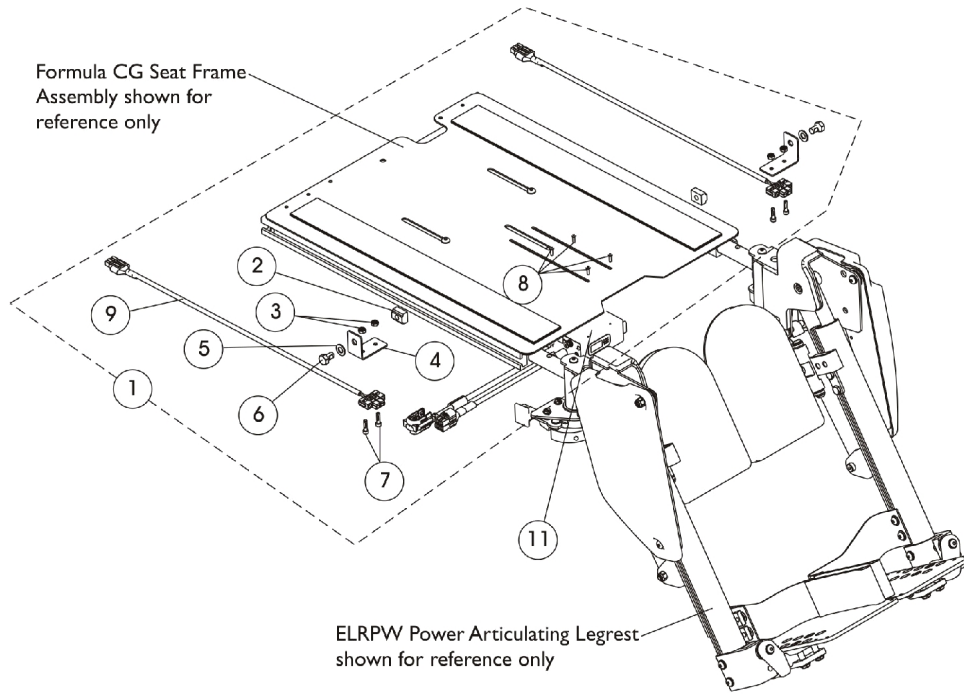


Dual Legs Integrated Actuator Module (DLIAM) MK6i & Legrest Harnesses For ELRPW Front Riggings



Dual Legs Integrated Actuator Module (DLIAM) MK6i & Legrest Harnesses For ELRPW Front Riggings

Item Number	Note	Part Number	Description	Quantity Per	
				Package	Assembly
1	C	1144585	Kit, ELRPW Power Articulating Legrest Harnesses and Mtg. Hdw. For Formula CG (Pair)	1	1
2			T-Nut (5/16-18)	1	2
3			Locknut (#8-32)	1	4
4			NLA - Bracket, Wire Harness, Black	1	2
5			Washer, Flat (5/16 x 5/8 x 1/16")	1	2
6			NLA - Screw, Hex Head w/ Patch (5/16-18 x 1/2")	1	2
7			NLA - Screw, Socket Head (#8-32 x 5/8")	1	4
8			Screw, Phillips Pan Head (#4-40 x 3/8")	1	4
9			Harness, ELRPW Power Legrest - Right	1	1
9			Harness, ELRPW Power Legrest - Left	1	1
8		1052041	Screw, Phillips Pan Head (#4-40 x 3/8")	1	4
10		1021742	Screw, Phillips Pan Head (#4-40 x 1/2")	1	2
11	A,B	1140032	Module, Dual Legs Integrated Actuator (DLIAM) - MK6i (54" L)	1	1

NOTE: A - The Dual Legs Integrated Actuator Module is attached to a 12"-16" wide ADJASBA (NON-Formula CG Seating System) seat pan in the same way when ELRPW Front Riggings are ordered with MK6i electronics
B - On 2/28/07 the Dual Leg Actuator Module (DLIAM) harness cable lengthened from approximately 3" to 20" long to eliminate the need for the ELRPW Power Legrest Harness Assemblies that attached between the DLIAM box and the ELRPW Power Legrest actuators.
C - The ELRPW Power Articulating Legrest Harnesses and Mounting Hardware Kit is also used on Formula TRE Powered Seating when MK6i electronics were introduced 10/09/06