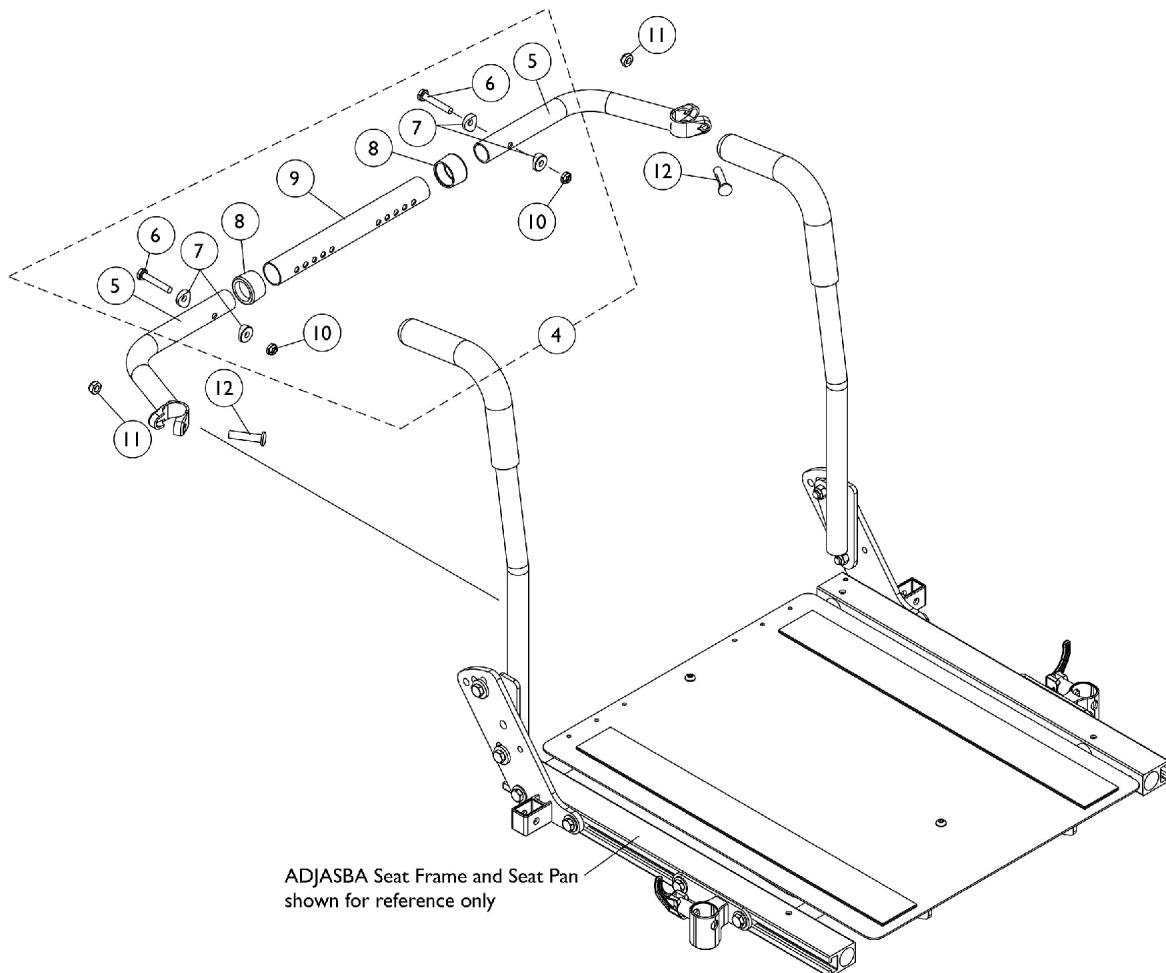
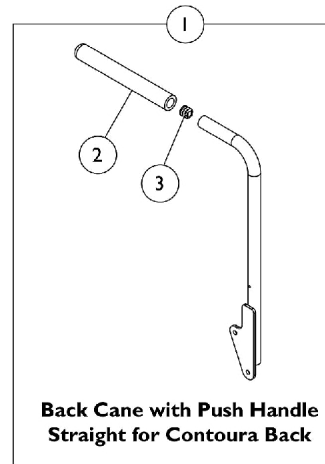
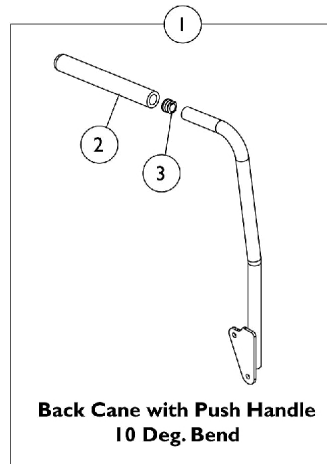


Back Canes and Spreader Bars

For ADJASBA Seat (After 8/07/05)

Contoura, Curve Contoura Backs for ADJASBA Seating do not utilize a Spreader Bar Assembly.



Back Canes and Spreader Bars

For ADJASBA Seat (After 8/07/05)

Contoura, Curve Contoura Backs for ADJASBA Seating do not utilize a Spreader Bar Assembly.

Item Number	Note	Part Number	Description	Quantity Per	
				Package	Assembly
1	A	See Chart	#1 Back Cane Assemblies	1	1
2		1135506	Package, Foam Hand Grip (9" L)	10	1
3		1134426	Package, Plug Button, Black (3/4")	10	1
4		1125709	Kit, Spreader Bar Assembly (16"-20" Wide)	1	1
5		NLA - Handle, Spreader Bar, Black	1	2	
6		Screw, Hex Head (1/4-20 x 1-1/2")	1	2	
7		Spacer, Coved (1/4 x 11/16 x 1/2")	1	4	
8		Anti-Rattle (1")	1	2	
9		Tube, Spreader Bar, Adjustable, Black (16 - 20" W)	1	1	
10		Locknut (1/4-20)	1	2	
4	A	1125710	Kit, Spreader Bar Assembly 20"-24" Wide	1	1
5		NLA - Handle, Spreader Bar, Black	1	2	
6		Screw, Hex Head (1/4-20 x 1-1/2")	1	2	
7		Spacer, Coved (1/4 x 11/16 x 1/2")	1	4	
8		Anti-Rattle (1")	1	2	
9		Tube, Spreader Bar, Adjustable, Black (20 - 24" W)	1	1	
10		Locknut (1/4-20)	1	2	
11		1025730	Locknut (5/16-24)	1	2
12		1031026	Screw w/ Lug (5/16-24 x 1-3/8")	1	2
NOTE: A - Includes items 5-10					

#1 Back Cane Assemblies

Back Cane Assemblies include Foam Grips and Plug Buttons where shown

Back Height	Back Cane - Push Handle 10 Deg. Bend Right	Back Cane - Push Handle 10 Deg. Bend Left	Back Cane - Push Handle Straight for Contoura Right	Back Cane - Push Handle Straight for Contoura Left
16"	1133822	1133823	N/A	N/A
17"	1133824	1133825	N/A	N/A
18"	1133826	1133827	1143334 See Note(s) A	1143335 See Note(s) A
19"	1133828	1133829	N/A	N/A
20"	1133830	1133831	N/A	N/A
NOTE: A - Wheelchairs manufactured before 5/15/09 with a Contoura Back 25" or 29" high and wheelchairs manufactured after 5/14/09 with a Curve Contoura Back 22" high will use the 18" high Straight Back Cane w/ Push Handle.				