

**Aquatec® Series Bath Lifts  
Aquatec® R/ SRB  
Aquatec® XL  
United States**



*Yes, you can.*

## Parts Catalog Usage Guide

The information contained in this document is subject to change without notice. This catalog contains service parts for Form No. 19\_129. If you have any questions regarding this catalog, please contact one of our Customer Service Representatives.

**For Customer Service Support Call:**

**1-800-333-6900**

**For Faxed In Orders Call:**

**1-800-678-4682 or**

**1-440-366-0709**

**For Technical Service Call:**

**1-800-832-4707**

**Literature Can Be Found at:**

**www.invacare.com or**

**1-800-828-6272**

### SYMBOL DEFINITION

Throughout this catalog you will notice letters to draw your attention to specific footnotes which are located at the bottom of the page or below specified charts.

Examples:

A,B,C etc. = Special Comments

NOTE: = General information pertaining to that specific page

NLA = No Longer Available

### HARDWARE MEASUREMENTS

The measurements for the hardware will be listed as follows:

Screws, Bolts Diameter X Thread Count/Pitch X Length

Washers Inside Diameter X Outside Diameter X Thickness

Spacers Inside Diameter X Outside Diameter X Length

For your convenience, we have supplied an area for you to list your Invacare Representatives.

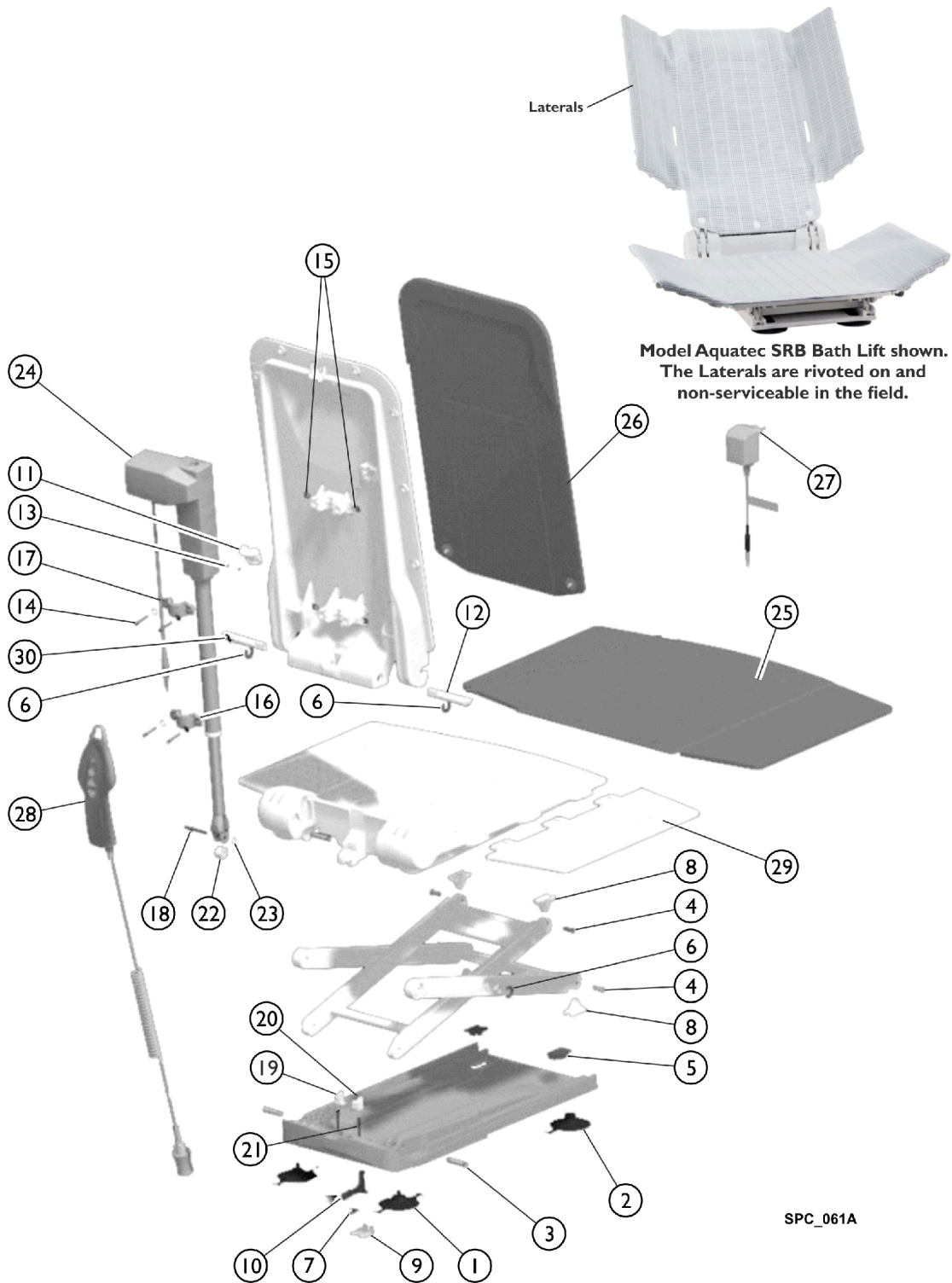
Name	Phone Numbers

© 2022 Invacare Corporation, Elyria, Ohio. Invacare, the Medallion Design and Yes, you can. are registered trademarks of the Invacare Corporation. Information is subject to change without notification.

# TABLE of CONTENTS

Description	Page Number
Aquatec R/SRB - Reclining Back Bath Lift .....	3
Aquatec XL - Heavy Duty Bath Lift .....	5

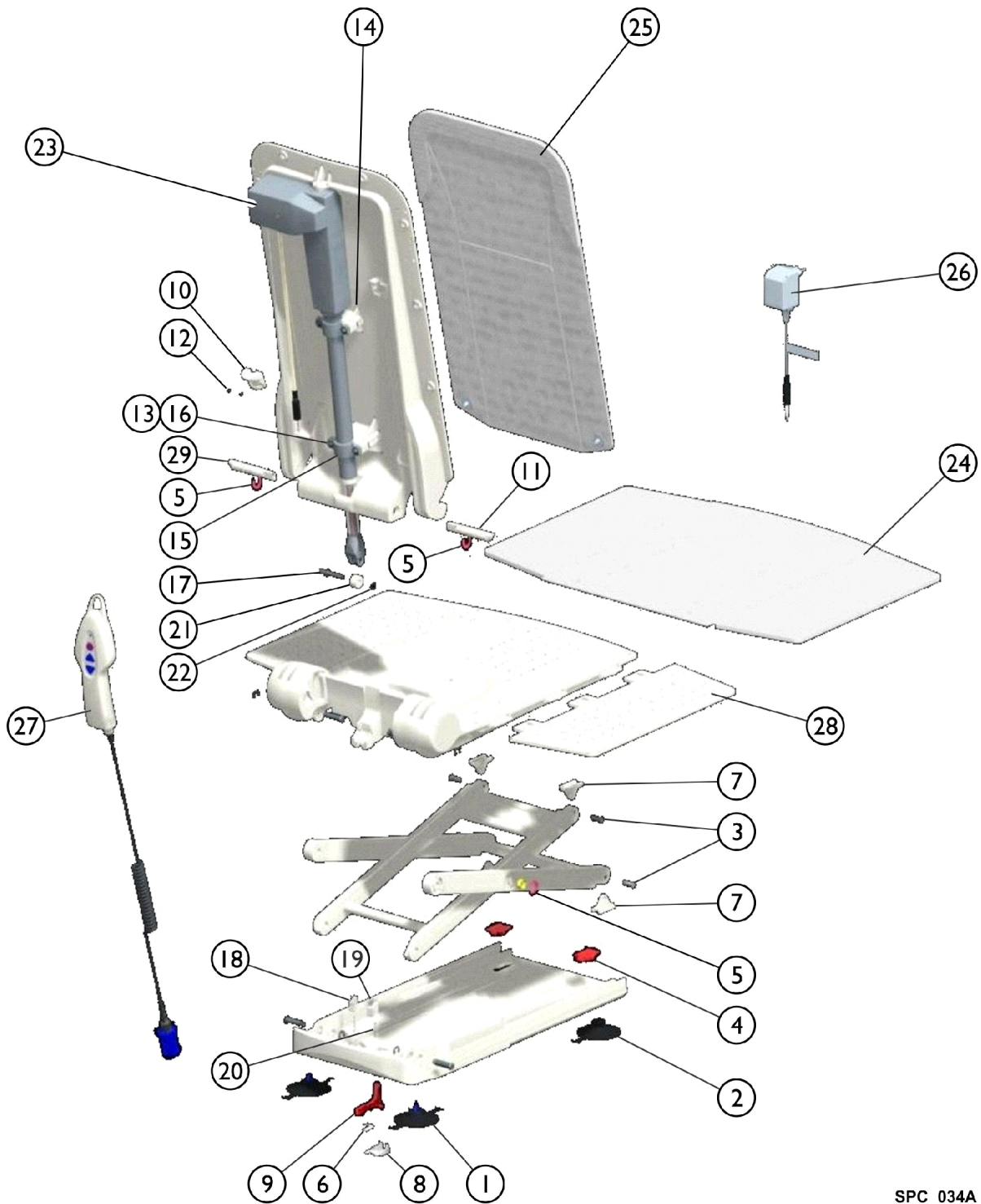
# Aquatec R/SRB - Reclining Back Bath Lift



## Aquatec R/SRB - Reclining Back Bath Lift

Item Number	Note	Part Number	Description	Quantity Per	
				Package	Assembly
1+2		15353	Cups, Suction, Screw-In and Toggle (Set) (8 cm)	4	1
3		16679	Bolt (10mm)	1	4
4		15105	Bolt for Gliding Shoe	1	4
5		15121	Cap for Suction Cup	1	2
6		15344	Washer, Securing	1	2
7		15415	Spring	1	1
8		16446	Shoe, Gliding	1	4
9		16448	Latch, Bushing	1	1
10		16449	Latch	1	1
11		16455	Holding Device (Excluding Screws)	1	1
12		1470579	Bolt, Right	1	1
13		15348	Screws, Phone Jack (40 x 22)	1	2
14		16781	Lens Head Screw DIN 7985, M5 x 30	1	4
15		16779	Nut for Actuator Fastening	1	4
16		16778	Clamp, Pipe, Actuator Fastening	1	2
17		16780	Washer A2 DIN 9021	1	4
18		16793	Axle	1	1
19		16791	Locking - Left	1	1
20		16792	Locking - Right	1	1
21		16794	Pressure Spring for Locking	1	2
22		16450	Pulley	1	1
23		16456	Ring, Retaining, A2	1	2
24		16782	Actuator, Aquatec R	1	1
25		16606	Cover, Seat, White	1	1
26		16604	Cover, Backrest, White	1	1
27		16580	Charger, Battery	1	1
28		1470902	Hand Control, Complete	1	1
29		15892	Flap, Side with Film Hinge	1	2
30		1470580	Bolt, Left	1	1
		1470576	Cover Set, Seat and Backrest, White	1	1
		1470767	Cover Set, Seat and Backrest, Blue	1	1
		1470766	Cover, Backrest, Blue	1	1
		1471567	Cover, Backrest w/ Laterals SPRS, Blue	1	1
		1470765	Cover, Seat, Blue	1	1
		16440	Backrest, Frame	1	1
		1471606-NLA	NLA - Sideflap, Aquatec	1	1

# Aquatec XL - Heavy Duty Bath Lift



SPC\_034A

## Aquatec XL - Heavy Duty Bath Lift

Item Number	Note	Part Number	Description	Quantity Per	
				Package	Assembly
1+2		15353	Cups, Suction, Screw-In and Toggle (Set) (8 cm)	4	1
3		15105	Bolt for Gliding Shoe	1	4
4		15121	Cap for Suction Cup	1	2
5		15344	Washer, Securing	1	2
6		15415	Spring	1	1
7		16446	Shoe, Gliding	1	4
8		16448	Latch, Bushing	1	1
9		16449	Latch	1	1
10		16455	Holding Device (Excluding Screws)	1	1
11		1470579	Bolt, Right	1	1
12		15348	Screws, Phone Jack (40 x 22)	1	2
13		16781	Lens Head Screw DIN 7985, M5 x 30	1	4
14		16779	Nut for Actuator Fastening	1	4
15		16778	Clamp, Pipe, Actuator Fastening	1	2
16		16780	Washer A2 DIN 9021	1	4
17		16793	Axle	1	1
18		16791	Locking - Left	1	1
19		16792	Locking - Right	1	1
20		16794	Pressure Spring for Locking	1	2
21		16450	Pulley	1	1
22		16456	Ring, Retaining, A2	1	2
23		1471062	Actuator, Aquatec XL	1	1
24		16606	Cover, Seat, White	1	1
25		16604	Cover, Backrest, White	1	1
26		16580	Charger, Battery	1	1
27		1470902	Hand Control, Complete	1	1
28		15892	Flap, Side with Film Hinge	1	2
29		1470580	Bolt, Left	1	1
		1470576	Cover Set, Seat and Backrest, White	1	1
		1470765	Cover, Seat, Blue	1	1
		1470766	Cover, Backrest, Blue	1	1
		1470767	Cover Set, Seat and Backrest, Blue	1	1
		16440	Backrest, Frame	1	1

Invacare Corporation

[www.invacare.com](http://www.invacare.com)



**Yes, you can.**

One Invacare Way  
Elyria, Oh USA  
44036-2125  
800-333-6900

Technical Support  
800-832-4707  
Customer Service  
800-333-6900

Literature Orders  
800-333-6900

© 2022 Invacare Corporation. All rights reserved. Republication, duplication or modification in whole or in part is prohibited without prior written permission from Invacare. Trademarks are identified by ™ and ®. All trademarks are owned by or licensed to Invacare Corporation or its subsidiaries unless otherwise noted. (Revised 09/23/22)

Form No. 19\_129