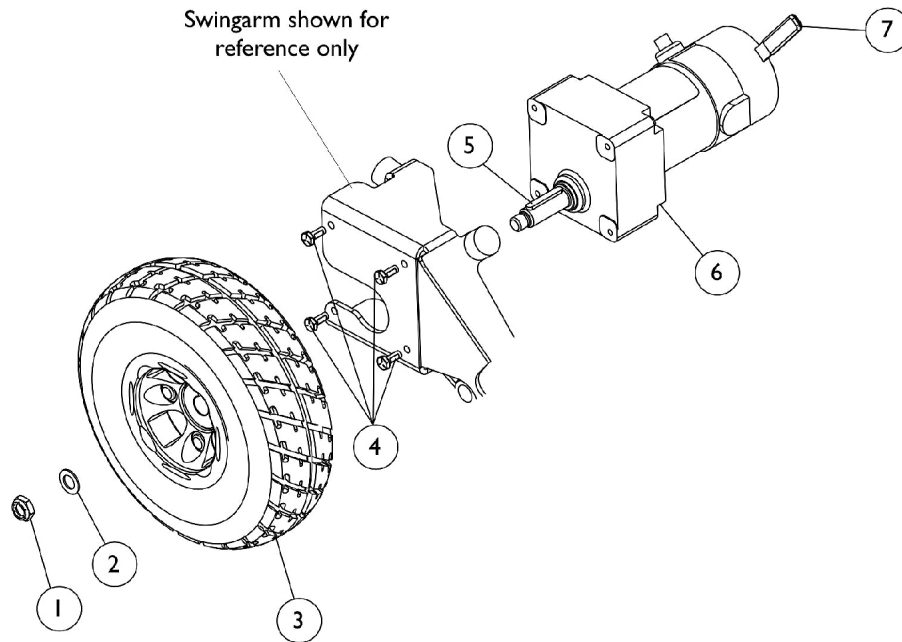


# Motor, Drive Wheel, and Hardware



## Motor, Drive Wheel, and Hardware

Item Number	Note	Part Number	Description	Quantity Per	
				Package	Assembly
1		1025737	Locknut (1/2-20)	1	1
2		1026174	Washer (1/2 x 7/8 x 3/64")	1	1
3		1105043	Drive Wheel Assembly, Flat Free Foam, Grey Tire/Black Rim (10" x 3")	1	1
		1102342	Tire w/ Foam Fill Insert, Grey (10" x 3")	1	1
4		1121024	Screw, Hex Head w/ Patch (1/4-20 x 5/8")	1	4
5		1023264	Key (6mm x 6mm x 40mm)	1	1
6	A,B1,B 2,B3	1134124-NLA	NLA - Motor/Gearbox Assembly - Right	1	1
6	A,B1,B 2,B3	1134124E-NLA	NLA - WARR RPLMT - Motor/Gearbox Assembly - Right	1	1
6	A,B1,B 2,B3	1134125	Motor/Gearbox Assembly - Left	1	1
6	A,B1,B 2,B3	1134125E-NLA	NLA - WARR RPLMT - Motor/Gearbox Assembly - Left	1	1
7		1143707	Package, Brake Lever Tip, Black	10	1

NOTE: A - Brushes are not serviceable.  
 B1 - Chairs manufactured with motors before serial number 08DSZ190001 and after serial numbers beginning with 09E generate reverse error codes.  
 B2 - During these periods, an error code on the right side motor would be an indication that the left side motor must be replaced.  
 B3 - An error code on the left side motor would be an indication that the right side motor must be replaced.