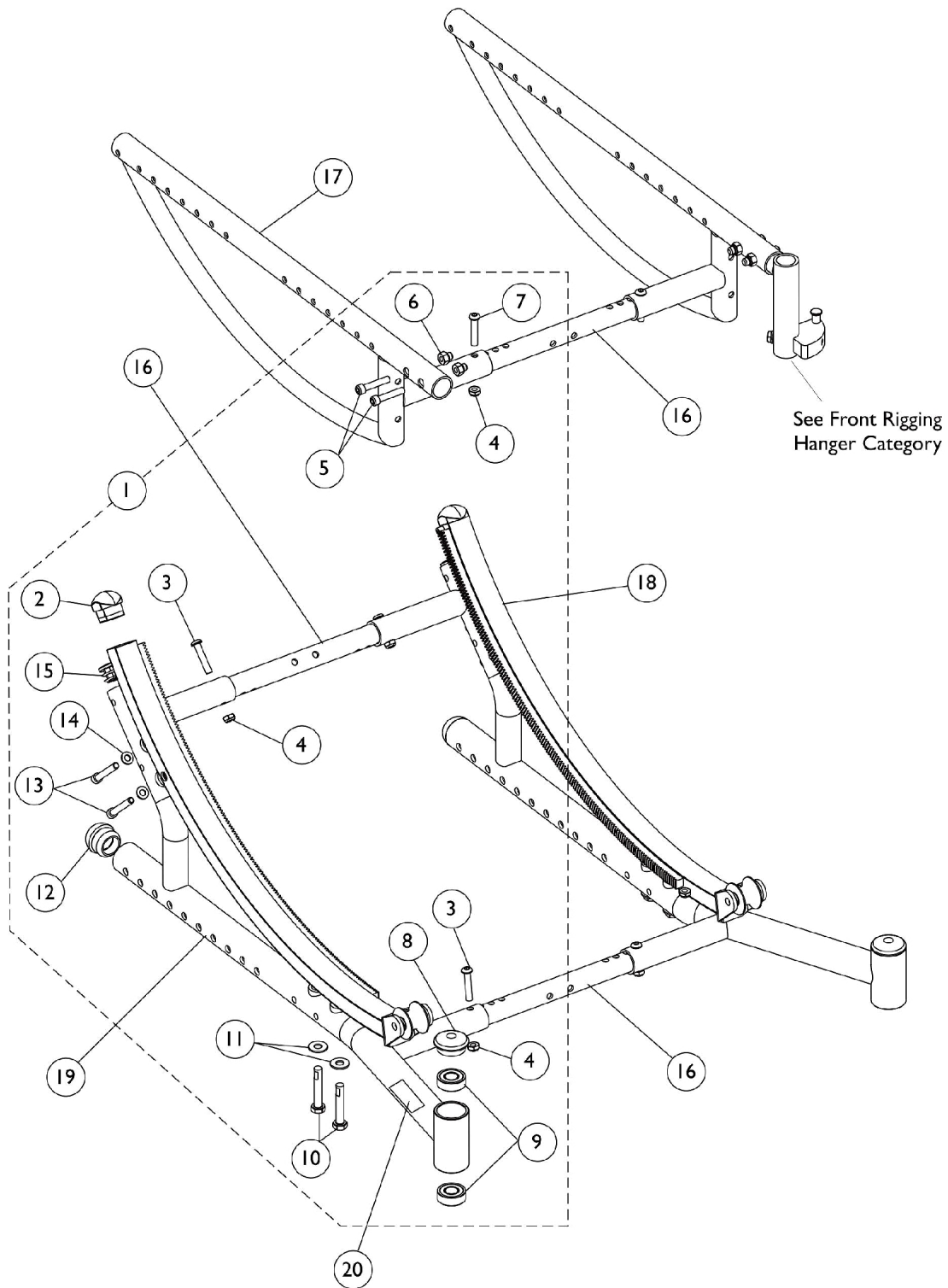


Base Frame, Seat Frame, and Hardware Before 5/22/06

Transport Ready Chairs requiring Frames and/or Frame Hardware parts must be returned to Invacare for service.



Base Frame, Seat Frame, and Hardware

Before 5/22/06

Transport Ready Chairs requiring Frames and/or Frame Hardware parts must be returned to Invacare for service.

Item Number	Note	Part Number	Description	Quantity Per	
				Package	Assembly
1	A,B,C, D	1127675-NLA	NLA - Kit, Frame Hardware	1	1
2			Plug Button, Black (1 x 1-1/4")	1	1
3			Screw, Socket Button Head (1/4-28 x 1-1/4")	1	2
4			Locknut (1/4-28)	1	3
5			Screw, Allen Head (1/4-28 x 1-1/4")	1	2
6			Nut, Hex (1/4-28)	1	2
7			Screw, Socket Button Head (1/4-28 x 1-1/2")	1	1
7			Screw, Socket Button Head (1/4-28 x 1-1/4")	1	1
8			Plug Button, Head Tube, Black	1	1
9			Bearing (1/2" I.D. x 1-1/8" O.D.)	1	2
10			NLA - Screw, Hex Head w/Patch (5/16-24 x 1-3/4")	1	2
11			Washer, Steel (5/16 x 3/4 x 1/16")	1	2
12			Plug Button, Dome, Black (1-1/4")	1	1
13			Screw, Socket Head (1/4-28 x 1-3/4")	1	2
14			Washer (1/4 x 1/2 x 1/16")	1	2
15	Plug Button, Black (7/8")	1	1		
16	G	See Chart	#16 Kit, Crossbraces with Hardware	1	1
17		See Chart	#17 Seat Frames	1	1
18	E	1127683-NLA	NLA - Gear Rack Assembly with Angle Tilt Decal - Right	1	1
18	E	1127684-NLA	NLA - Gear Rack Assembly with Angle Tilt Decal - Left	1	1
19	F	See Chart	#19 Base Frame Assembly	1	1
20		1128856-NLA	NLA - Decal, Model - Solara	1	1
20		1128857	Decal, Model - Spree GT	1	1

NOTE: A - Includes items 2-15
 B - Items 5 and 6 are used only on Solara chairs with front rigging hangers
 C - Item 7 Screw (1/4-28 x 1-1/2") is used on chairs with drop mounted seat pan
 D - Item 7 Screw (1/4-28 x 1-1/4") is used on chairs with flush mounted seat pan
 E - Includes item 2, Plug Button
 F - Includes items 9, 12, 15, and 20
 G - Kit includes 5 ea. Crossbraces and all attaching hdwr. 3 crossbraces are req'd for Base/Seat Frames, 1 crossbrace is req'd for Tilt Hdwr. and 1 crossbrace is req'd for Axle Mounting Hdwr.

Base Frame, Seat Frame, and Hardware

Before 5/22/06

Transport Ready Chairs requiring Frames and/or Frame Hardware parts must be returned to Invacare for service.

#16 Kit, Crossbraces with Hardware

Seat Width Range 12-16"	Seat Width Range 14-18"	Seat Width Range 16-20"	Seat Width Range 18-22"	Quantity
1127700-NLA See Note(s) A	1127701-NLA See Note(s) A	1127702-NLA See Note(s) A	1127703-NLA See Note(s) B, A	1
N/A	N/A	N/A	1164095	1
N/A	N/A	N/A	1025765	14
N/A	N/A	N/A	1055309	10
N/A	N/A	N/A	1083099	4

NOTE: A - As of 8/9/07, the finish changed from black anodize to flat black.
 B - See part #'s listed below part #1127703 and order together 1 ea. 1164095 Kit, Crossbrace Tubes, 14 ea. 1025765 Locknuts (1/4-28), 10 ea. 1055309 Screw, SBH (1/4-28 x 1-1/4") and 4 ea. 1083099 Screw, SBH (1/4-28 x 1-1/2") as a replacement.

#17 Seat Frames

Specify frame finish when ordering

Seat Depth Range	Right	Left
12-16"	8881126326-NLA See Note(s) A	8881126327-NLA See Note(s) A
15-19"	8881127182-NLA See Note(s) A	8881127183-NLA See Note(s) A
18-22"	8881127184-NLA See Note(s) A	8881127185-NLA See Note(s) A

NOTE: A - Specify frame finish when ordering

Base Frame, Seat Frame, and Hardware

Before 5/22/06

Transport Ready Chairs requiring Frames and/or Frame Hardware parts must be returned to Invacare for service.

#19 Base Frame Assembly

Includes items 9,12, 15, and 20. Specify frame finish when ordering.

Seat Depth Range	Solara Right	Solara Left	Spree GT Right	Spree GT Left
12-16"	8881127681-NLA See Note(s) A	8881127682-NLA See Note(s) A	8881127704-NLA See Note(s) A	8881127705-NLA See Note(s) A
15-19"	8881127677-NLA See Note(s) A	8881127678-NLA See Note(s) A	8881127706-NLA See Note(s) A	8881129489 See Note(s) A
18-22"	8881127679-NLA See Note(s) A	8881127680-NLA See Note(s) A	N/A	N/A
NOTE: A - Specify frame finish when ordering				