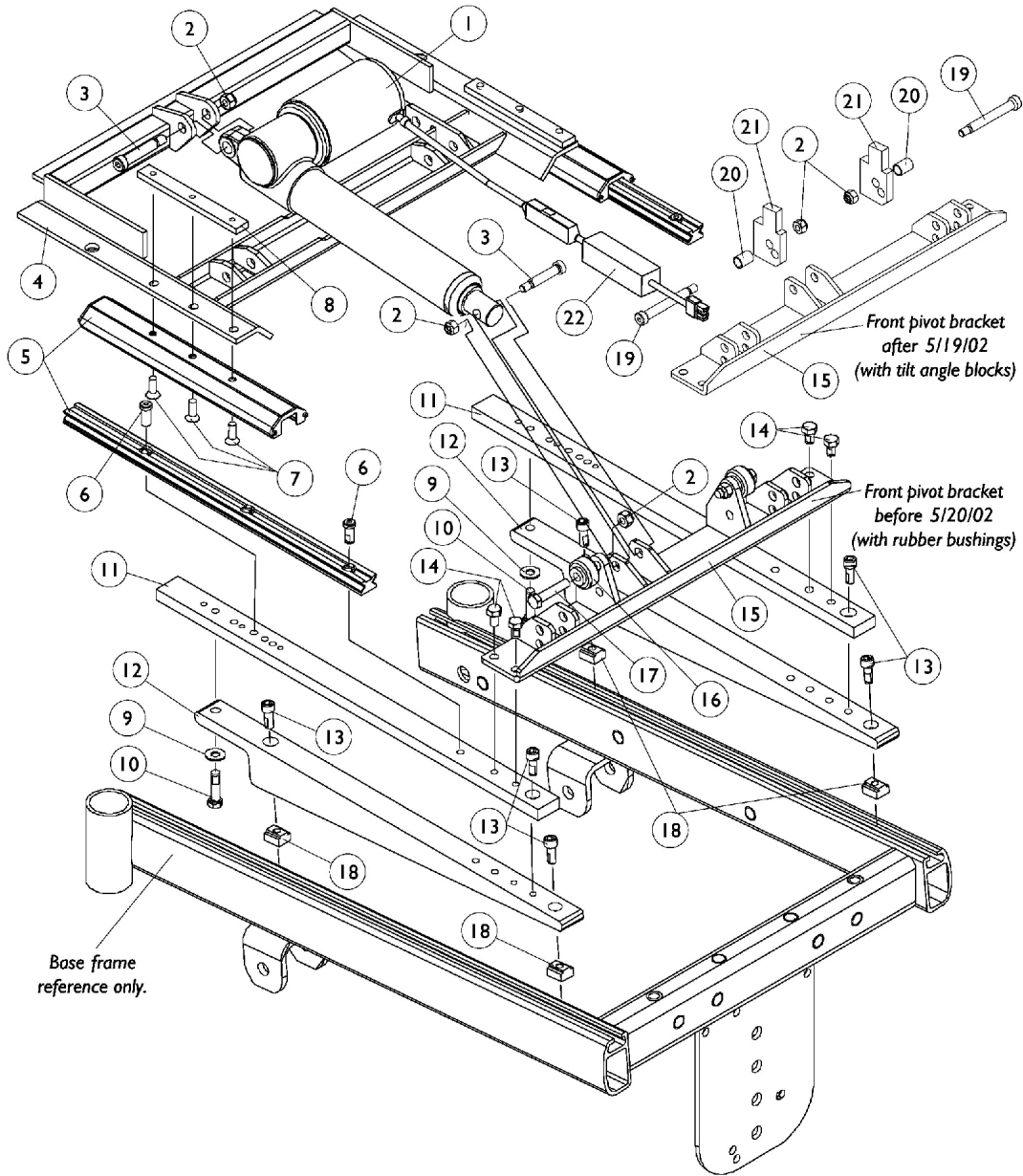


Base Frame Interface Hardware - FWD

Tilt Only (2GT) and Tilt/Recline (2GTR)



Base Frame Interface Hardware - FWD Tilt Only (2GT) and Tilt/Recline (2GTR)

Item Number	Note	Part Number	Description	Quantity Per	
				Package	Assembly
1	B	1082778-NLA	NLA - Actuator Motor Assembly, Tilt	1	1
2		1026158	Locknut (5/16-18)	1	4
3		1031665	Screw, Shoulder Hex Socket Head (3/8 x 1-1/2", 5/16-18)	1	2
4		1082873-NLA	NLA - Pivot Assembly, Rear	1	1
5		1082760-NLA	NLA - Guidance Assembly, Linear	1	2
6		1117326-NLA	NLA - Screw, Socket Head w/ Patch (5/16-18 x 7/8")	1	4
7		1091869-NLA	NLA - Screw, Socket Flat Head w/ Patch (1/4-20 x 3/4")	1	6
8		1082877-NLA	NLA - Bar, Clamp, Black	1	2
9		1074133	Washer, Steel (5/16 x 3/4 x 1/16")	1	2
10		7930337-NLA	NLA - Package, Screw, Hex Head w/ Patch (5/16-18 x 1-1/4")	25	1
11		1095481-NLA	NLA - Plate, Wedge	1	2
12		1095479-NLA	NLA - Wedge, Seat Mounting, Black	1	2
13		1086944-NLA	NLA - Screw, Socket Head (5/16-18 x 3/4")	1	6
14		1061922-NLA	NLA - Screw, Hex Head w/ Patch (5/16-18 x 1/2")	1	4
15	A	1082872-NLA	NLA - Bracket, Pivot, Front, Black	1	1
16		1039655	Bushing, Rubber	1	2
17		1070398-NLA	NLA - Screw, Hex Head (5/16-18 x 1-1/2")	1	2
18		1069724	T-Nut (5/16-18)	1	4
19		1070411-NLA	NLA - Bolt, Shoulder (3/8 x 2-1/2")	1	2
20		1098646-NLA	NLA - Bushing, Black (7/16 x 1/2 x 11/16")	1	2
21		1098645-NLA	NLA - Block, Black Tilt Angle	1	2
22	C	1140059-NLA	NLA - Kit, Actuator Braking Module w/ Instruction Sheet	1	1
	D	1141508	Instruction Sheet, Actuator Braking Module	1	1

NOTE: A - Front pivot bracket made before 5/20/02 is no longer available. For seating systems manufactured before 5/20/02, see Front Pivot Bracket and Links Kit page and order Kit part number 1112693.
 B - Actuator Braking Module added to Tilt Actuator and is backward compatible to all systems manufactured before 5/18/06. The addition of the braking module eliminated the requirement of a Heavy Duty Tilt Actuator.
 C - Actuator Braking Module can be assembled in the field on seating systems manufactured before 5/18/06 as well. Must verify with an Invacare Technician when a kit is required.
 D - Not Shown