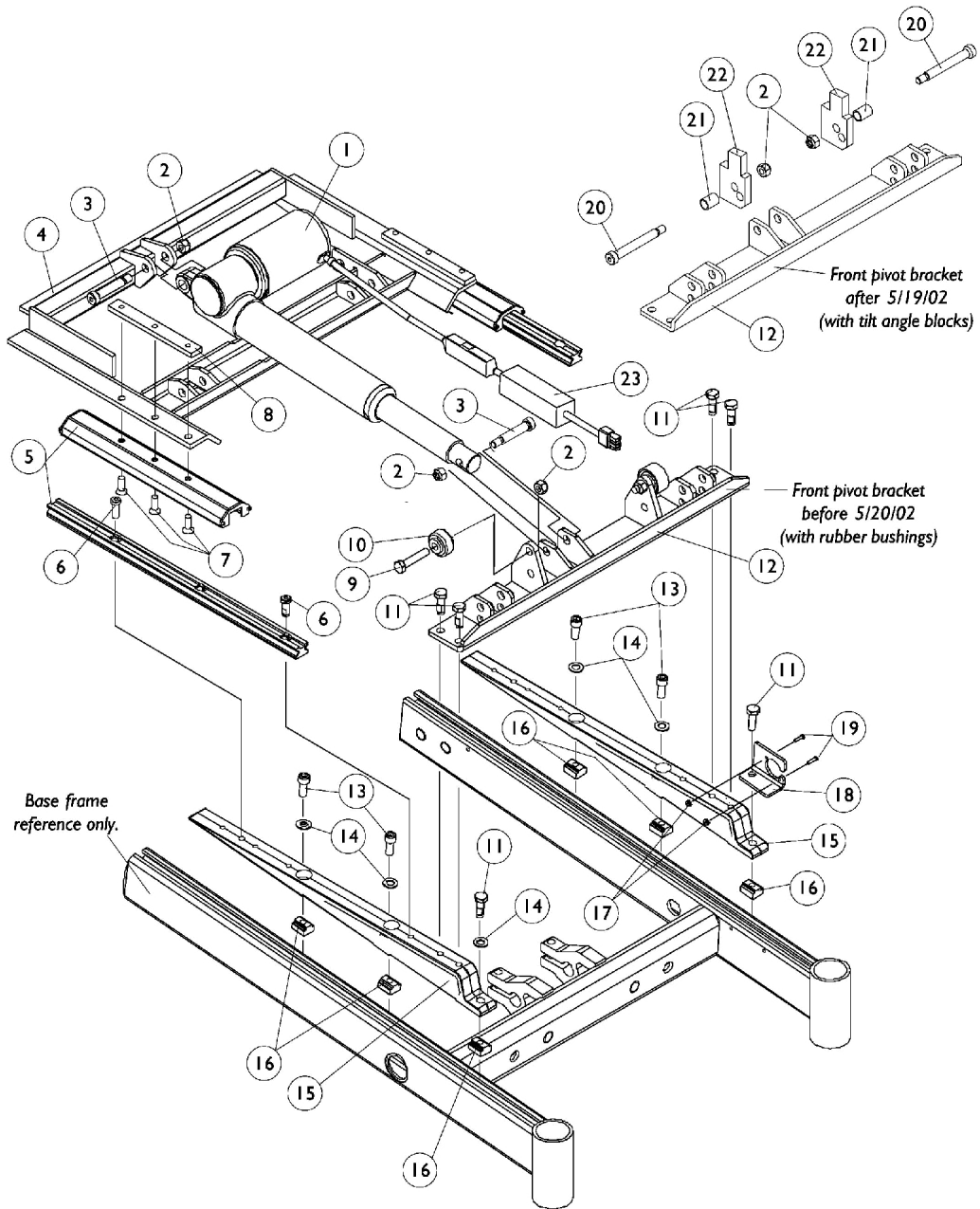


Base Frame Interface Hardware

RWD

Tilt Only (2GT) and Tilt/Recline (2GTR)



Base Frame Interface Hardware

RWD

Tilt Only (2GT) and Tilt/Recline (2GTR)

Item Number	Note	Part Number	Description	Quantity Per	
				Package	Assembly
1	B	1082778-NLA	NLA - Actuator Motor Assembly, Tilt	1	1
2		1026158	Locknut (5/16-18)	1	4
3		1031665	Screw, Shoulder Hex Socket Head (3/8 x 1-1/2", 5/16-18)	1	2
4		1082873-NLA	NLA - Pivot Assembly, Rear	1	1
5		1082760-NLA	NLA - Guidance Assembly, Linear	1	2
6		1117326-NLA	NLA - Screw, Socket Head w/ Patch (5/16-18 x 7/8")	1	4
7		1091869-NLA	NLA - Screw, Socket Flat Head w/ Patch (1/4-20 x 3/4")	1	6
8		1082877-NLA	NLA - Bar, Clamp, Black	1	2
9		1070398-NLA	NLA - Screw, Hex Head (5/16-18 x 1-1/2")	1	2
10		1039655	Bushing, Rubber	1	2
11		1070462-NLA	NLA - Screw, Hex Head w/ Patch (5/16-18 x 7/8")	1	6
12	A	1082872-NLA	NLA - Bracket, Pivot, Front, Black	1	1
13		1086944-NLA	NLA - Screw, Socket Head (5/16-18 x 3/4")	1	4
14		1025704	Washer, Flat (5/16 x 5/8 x 1/16")	1	5
15		1082880-NLA	NLA - Support, Seat	1	2
16		1069724	T-Nut (5/16-18)	1	6
17		P0870X000	Nut, Hex Keps (#4-40)	1	2
18		1070430-NLA	NLA - Bracket, Charger Connector, Black	1	1
19		7930318-NLA	NLA - Package, Screw, Phillips Pan Head (#4-40 x 1/2")	25	1
20		1070411-NLA	NLA - Bolt, Shoulder (3/8 x 2-1/2")	1	2
21		1098646-NLA	NLA - Bushing, Black (7/16 x 1/2 x 11/16")	1	2
22		1098645-NLA	NLA - Block, Black Tilt Angle	1	2
23	C	1140059-NLA	NLA - Kit, Actuator Braking Module w/ Instruction Sheet	1	1
	D	1141508	Instruction Sheet, Actuator Braking Module	1	1

NOTE: A - Front pivot bracket made before 5/20/02 is no longer available. For seating systems manufactured before 5/20/02, see Front Pivot Bracket and Links Kit page and order Kit part number 1112693.
B - Actuator Braking Module added to Tilt Actuator and is backward compatible to all systems made before 5/18/06. The addition of the braking module eliminated the requirement of a Heavy Duty Tilt Actuator.
C - Actuator Braking Module can be assembled in the field on seating systems before 5/18/06 as well. Must verify with an Invacare Technician when a kit is required.
D - Not Shown