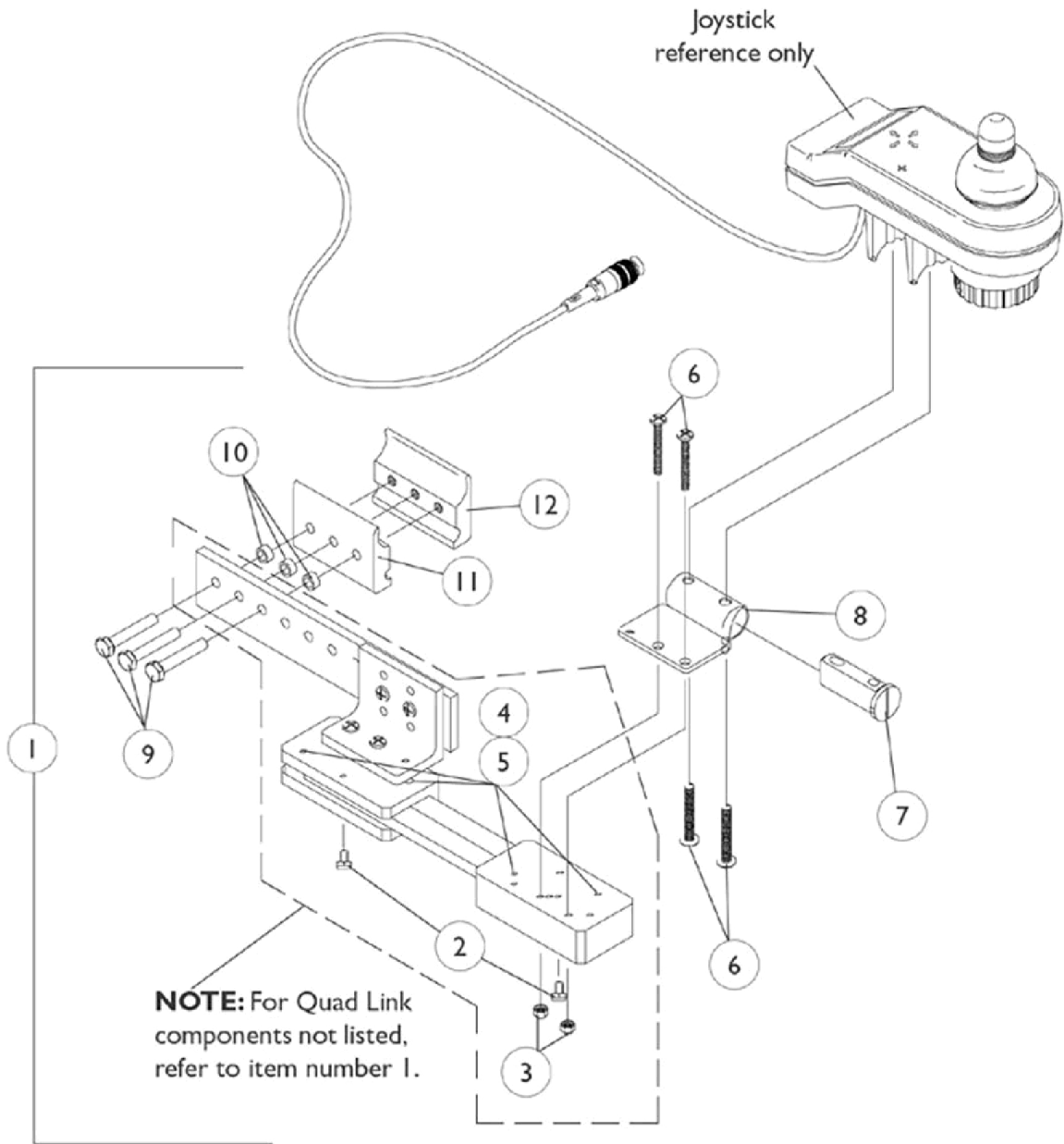


# Quad Link Assembly

Before 4/07/06



## Quad Link Assembly Before 4/07/06

| Item Number | Note | Part Number | Description                                   | Quantity Per |          |
|-------------|------|-------------|---|--------------|----------|
|             |      |             |   | Package      | Assembly |
| 1           | A    | 1052402-NLA | NLA - Kit, Quad Link Assembly - Right         | 1            | 1        |
| 2           |      |             | NLA - Ball Plunger Assembly with Lock Washer  | 2            | 1        |
| 3           |      |             | Locknut (#10-32)                              | 1            | 2        |
| 4           |      |             | NLA - Screw, Cap, Socket Head (#10-32 x 1/2") | 1            | 4        |
| 5           |      |             | NLA - Bushing, Bronze (3/16 x 1/4 x 1/4")     | 1            | 4        |
| 6           |      |             | Screw, Phillips Pan Head (#10-32 x 1-1/8")    | 1            | 4        |
| 7           |      |             | Spacer, Joystick Tube, Black                  | 1            | 1        |
| 8           |      |             | NLA - Stud Plate, Quad Link                   | 1            | 1        |
| 9           |      |             | Screw, Hex Head (1/4-20 x 1-1/2")             | 1            | 3        |
| 10          |      |             | NLA - Spacer (1/4 x 3/8 x 3/16")              | 1            | 3        |
| 11          |      |             | Half Clamp, Non-Threaded Holes                | 1            | 1        |
| 12          |      |             | NLA - Half Clamp, Threaded Holes              | 1            | 1        |
| 1           | A    | 1115372-NLA | NLA - Kit, Quad Link Assembly - Left          | 1            | 1        |
| 2           |      |             | NLA - Ball Plunger Assembly with Lock Washer  | 2            | 1        |
| 3           |      |             | Locknut (#10-32)                              | 1            | 2        |
| 4           |      |             | NLA - Screw, Cap, Socket Head (#10-32 x 1/2") | 1            | 4        |
| 5           |      |             | NLA - Bushing, Bronze (3/16 x 1/4 x 1/4")     | 1            | 4        |
| 6           |      |             | Screw, Phillips Pan Head (#10-32 x 1-1/8")    | 1            | 4        |
| 7           |      |             | Spacer, Joystick Tube, Black                  | 1            | 1        |
| 8           |      |             | NLA - Stud Plate, Quad Link                   | 1            | 1        |
| 9           |      |             | Screw, Hex Head (1/4-20 x 1-1/2")             | 1            | 3        |
| 10          |      |             | NLA - Spacer (1/4 x 3/8 x 3/16")              | 1            | 3        |
| 11          |      |             | Half Clamp, Non-Threaded Holes                | 1            | 1        |
| 12          |      |             | NLA - Half Clamp, Threaded Holes              | 1            | 1        |
| 2           |      | 1114863-NLA | NLA - Ball Plunger Assembly with Lock Washer  | 2            | 1        |

NOTE: A - Includes the Quad Link, items 2-12 and used with a MKIV RII joystick