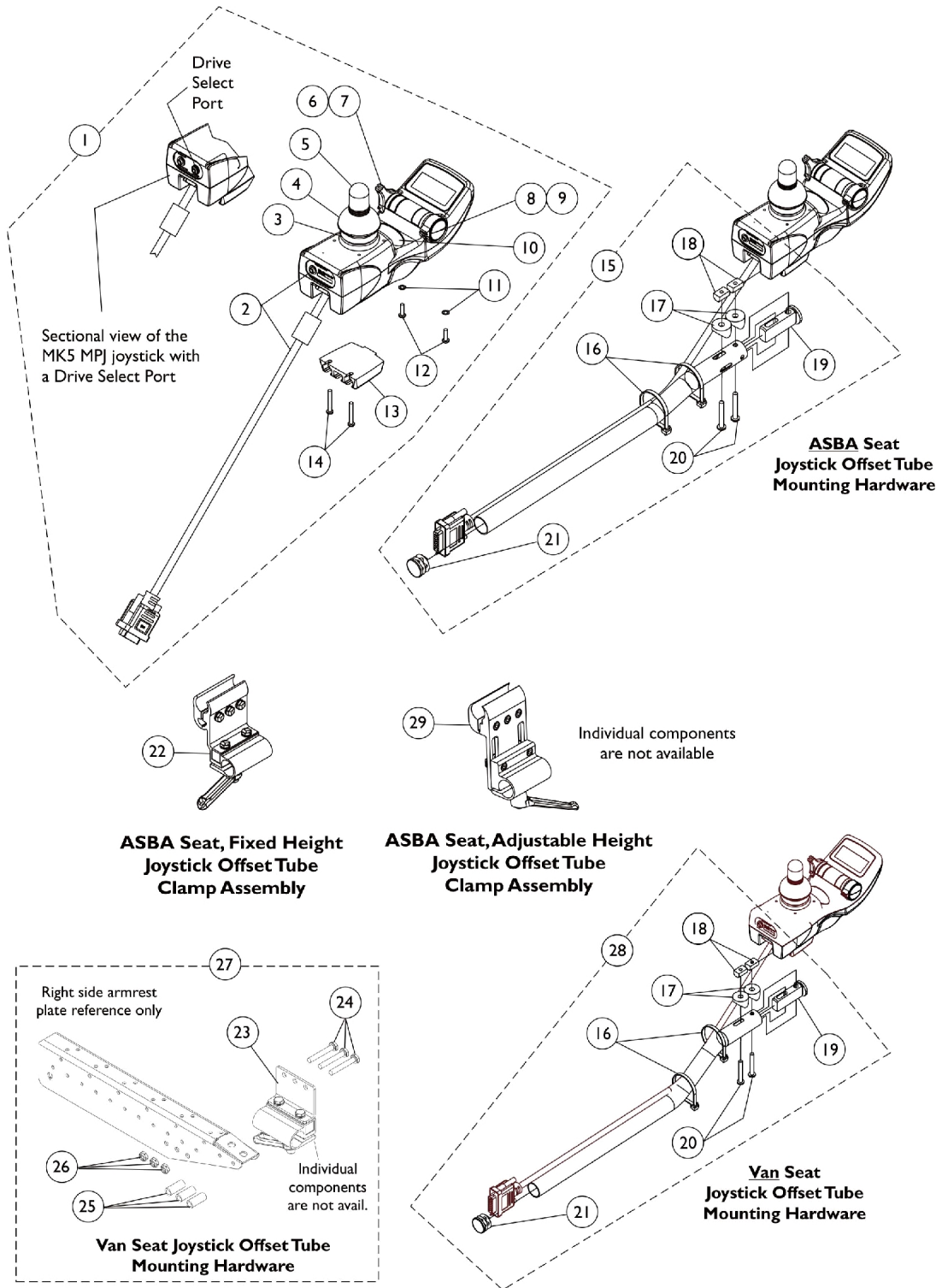


MK5 MPJ Joystick and Mounting Hardware

Introduced 2/1/04



MK5 MPJ Joystick and Mounting Hardware

Introduced 2/1/04

Item Number	Note	Part Number	Description	Quantity Per	
				Package	Assembly
1	A	1115740-NLA	NLA - Joystick, MK5 MPJ	1	1
1	A	1115740E-NLA	NLA - WARR RPLMT - Joystick, MK5 MPJ	1	1
1	A	1122214-NLA	NLA - Joystick, MK5 MPJ with Drive Select Port	1	1
2		1117038-NLA	NLA - Joystick Bottom and Cable Assembly, MK5 MPJ	1	1
3		1115235-NLA	NLA - Inductive, MK5 MPJ/ DPJ/ SPJ-80 Joystick	1	1
4		1040218	Skirt, Joystick Rubber, Black	1	1
5		1040217	Knob, Joystick Rubber, Black	1	1
6		1115237-NLA	NLA - Switch Assembly, Power/ Drive Select MK5 MPJ	1	1
7		1115214-NLA	NLA - Knob, Power/Drive Select - MK5/MK6i MPJ	1	1
8		1115239-NLA	NLA - Potentiometer Assembly, Speed MK5 MPJ	1	1
9		1115233-NLA	NLA - Knob, Speed Potentiometer - MK5 MPJ	1	1
9		1139998-NLA	NLA - Knob, Speed Adjustment, Black - MK6i	1	1
10		1095497	Decal, Invacare Logo (1.6)	1	1
11		1008834-NLA	NLA - Lockwasher, Internal Tooth (#6)	1	2
12		1115242-NLA	NLA - Screw, Torx Thread Forming (#6-32 x 1/2")	1	2
13		1115503-NLA	NLA - Bracket, T-Nut Mounting	1	1
14		1115244	Screw, Torx Thread Forming (#6-32 x 1")	1	2
15	B	1115860-NLA	NLA - Joystick Offset Tube w/ Hardware, Black (1/2")	1	1
16		1095502-NLA	NLA - Package, Tie Wrap (11-1/2" L)	10	2
17		40157X019-NLA	NLA - Spacer, Coved (1/4 x 7/8 x 7/16")	1	2
18		1117216-NLA	NLA - T-Nut (#10-32)	1	2
19		1093063	Spacer, Joystick Tube, Black	1	1
20		1026107	Screw, Phillips Pan Head (#10-32 x 1-3/8")	1	2
21		1027095	Plug Button, Black (7/8")	1	1
22		1093071	Clamp, Fixed Height Joystick Tube	1	1
23		1105049	Clamp Assembly, Fixed Height, Captain/ Van Seat	1	1
24		1037610	Screw, Hex Head (1/4-20 x 1-5/8")	1	3
25		1087219	Spacer (1/4 x 3/8 x 1")	1	3
26		1025195	Locknut (1/4-20)	1	3
27	C	1115000	Kit, Joystick Tube Mounting Hardware - Captain Seat	1	1
28	B	1123922-NLA	NLA Joystick Offset Tube w/ Hardware, Black (2")	1	1
29	E	1139422	Clamp, Height Adjustable Joystick Tube (ARM250)	1	1
	D	1006270	Extension, Joystick, "T" Style (1560) (4" W x 5-1/2" L)	1	1
	D	1006271	Extension, Joystick, Straight Style (1561) (1/2" W x 5" L)	1	1

NOTE: A - Includes items 2-14.
B - Includes Joystick Tube plus items 16-21.
C - Includes items 23-26.
D - Not Shown.
E - Introduced as an option (ARM250) and can be used to replace a Fixed Height Joystick Clamp.