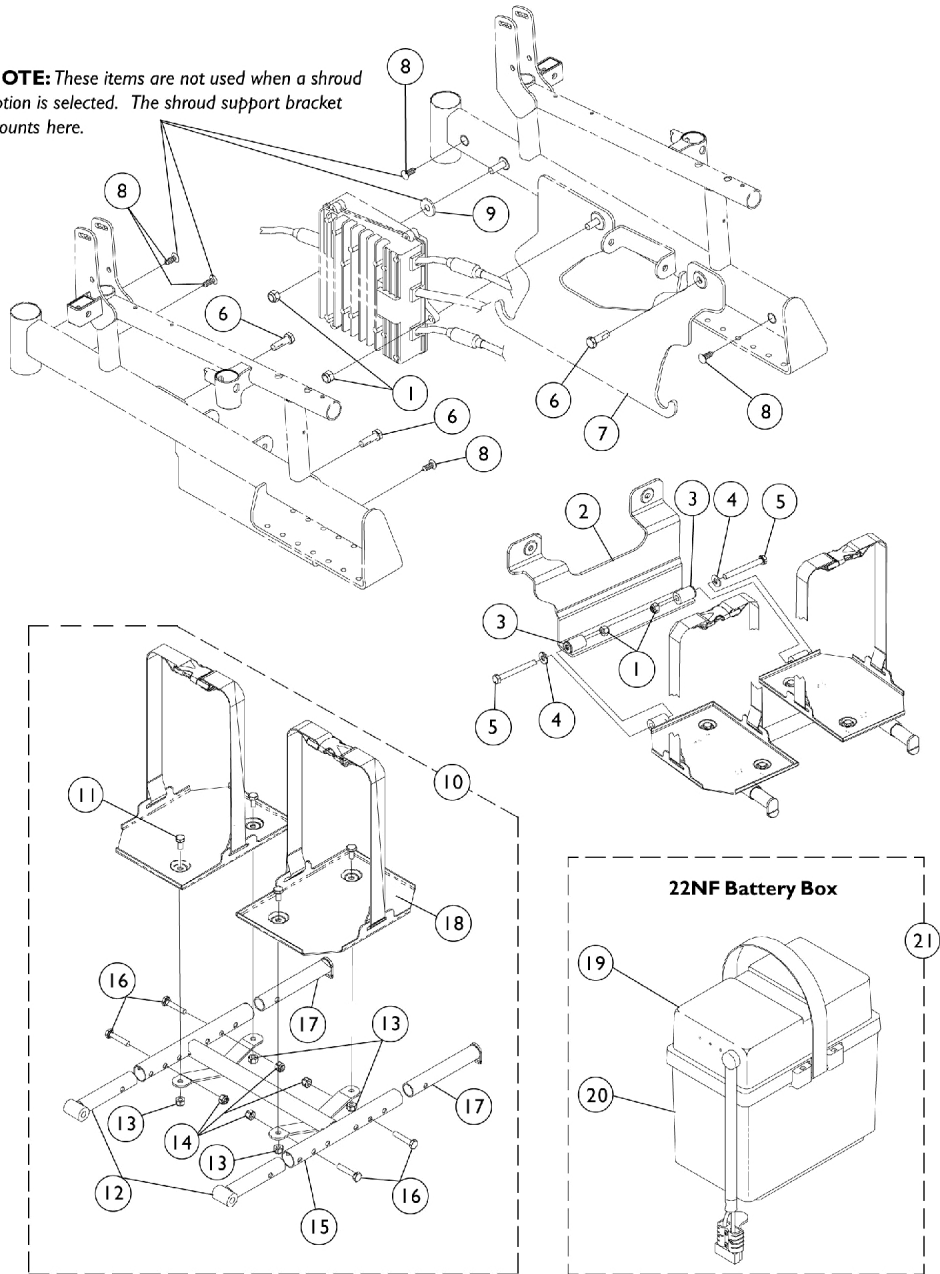


Battery Boxes & Trays

NOTE: These items are not used when a shroud option is selected. The shroud support bracket mounts here.



Battery Boxes & Trays

Item Number	Note	Part Number	Description	Quantity Per	
				Package	Assembly
1		1026158	Locknut (5/16-18)	1	2
2		1080242-NLA	NLA - Bracket, Pivot, Black - Right	1	1
3		1026032	Washer, Nylon (11/32 x 11/16 x 1/16")	1	2
4		1018739	Washer (1/4 x 5/8 x 3/32")	1	2
5		1042486	Screw, Hex Head (5/16-18 x 2-3/4")	1	2
6	K	1043627-NLA	NLA - Screw, Hex Head w/ Patch (5/16-18 x 1-3/4")	1	1
6	L	1050161-NLA	NLA - Screw, Hex Head w/ Patch (5/16-18 x 1")	1	3
7		1080240-NLA	NLA - Bracket, Pivot, Black - Left	1	1
8		1058520-NLA	NLA - Fastener, Panel Snap-In	1	5
9		1079247	Washer, Flat (21/64 x 53/64 x 7/64")	1	1
10	H	1080255-NLA	NLA - Tray, Battery Assembly w/ Hardware	1	1
11		1025752-NLA	NLA - Screw, Hex Head (1/4-20 x 1-1/2")	1	4
12		1080250-NLA	NLA - Pin, Tray Pivot	1	2
13		7930323-NLA	NLA - Package, Locknut (1/4-20)	25	1
14		7930333	Locknut (1/4-20)	25	1
15		1080241-NLA	NLA - Support, Tray	1	1
16		1021406	Screw, Hex Head (1/4-20 x 1-1/4")	1	4
17		1080256-NLA	NLA - Pin, Tray	1	2
18		1080239-NLA	NLA - Tray w/ Buckle	1	2
19	A,B,I	1097003	Battery Box Top, Rear, 22NF	1	2
20	J	1057944	Battery Box Bottom with Strap, 22NF	1	2
	G	1057954-NLA	NLA - Strap, Battery	1	1
	G	1041433-NLA	NLA - Pin, Handle	1	2
21	I	1097007	Battery Box Assembly, Rear, 22NF	1	2
	A,E,G	50000X166-NLA	NLA - Fuse - Buss 2-1/4" L (60 AMP)	1	2
	F,G	1089385	Fuse, MIDI (Non-G/B & G/B) (80 AMP)	1	2
	C,G	1060318-NLA	NLA - Hardware, Battery Terminal, UI Batteries (Pair)	2	1
	D,G	1058618-NLA	NLA - Hardware, Battery Terminal, 22NF Batteries (Pair)	2	1

NOTE: A - As of 11/05/99 the battery harness fuse changed from a Bussman 60AMP to a MIDI 80AMP fuse. This battery box top is compatible for all chairs manufactured before 11/05/99 and must be ordered whenever a replacement Bussman 60AMP fuse is replaced.
 B - It is recommended that new terminal hardware be ordered when a new battery box top is ordered.
 C - Hardware includes small battery terminal caps (gray and orange), 1/4-20 x 7/8" hex flange screws, 1/4-20 hex flange nuts, cable ties, locking tab washers and instruction sheet for two batteries.
 D - Hardware includes battery clamps, battery clamp caps (red and black), small battery terminal caps (red and black), 1/4-20 x 7/8" hex flange screws, 1/4-20 hex flange nuts, cable ties and locking tab washers for two batteries.
 E - Before 11/5/99.
 F - After 11/4/99.
 G - Not Shown.
 H - Includes Items 11-18.
 I - 22NF and UI 250-S Models.
 J - Includes: Battery Strap #105794 and Handle Pin #104133.
 K - With One Piece Footboard.
 L - Without One Piece Footboard.