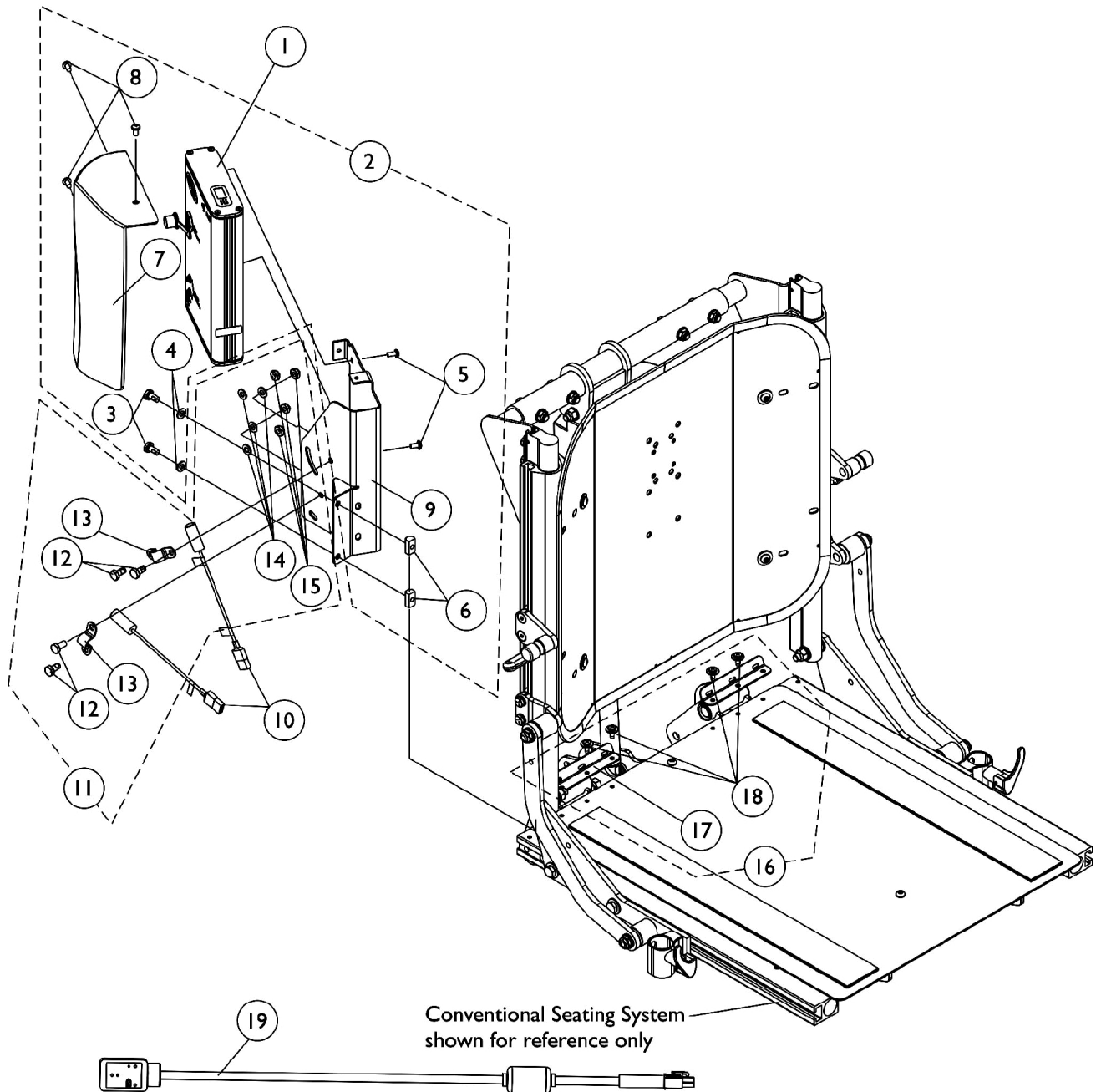


MK5 TAC, Shroud Cover and Mercury Free Switches

Conventional Recline & Recline w/ BPO Option (After 1/5/06)

As of 7/1/2009, switches are mercury free.



MK5 TAC, Shroud Cover and Mercury Free Switches

Conventional Recline & Recline w/ BPO Option (After 1/5/06)

As of 7/1/2009, switches are mercury free.

Item Number	Note	Part Number	Description	Quantity Per	
				Package	Assembly
1	D	1118728-NLA	NLA - Controller, MK5 TAC	1	1
2	A	1133131-NLA	NLA - Kit, TRECM/TAC Mounting Hardware and Shroud Cover	1	1
3			For Conventional Seating w/ Extruded Canes		
4			Screw, Hex Head w/ Patch (1/4-20 x 1/2")	1	2
5			Washer (1/4 x 1/2 x 1/16")	1	2
6			NLA - Screw, Phillips Pan Head w/ Patch (#10-32 x 3/8")	1	2
7			T-Nut (1/4-20)	1	2
8			Shroud, TRECM/TAC Recline Cover	1	1
9			Screw, Phillips Pan Head Tap (#10-32 x 3/8")	1	3
10			NLA - Bracket, TRECM/TAC Controller/Shroud Mounting, Black	1	1
11	B	1080634-NLA	NLA - Harness, Drive Lockout Mercury Free Ball Switch	1	2
12		1125730	NLA - Kit, Drive Lockout/Recline Switch Mounting Hardware	2	1
13			Screw, Hex Head w/ Patch (1/4-20 x 1/2")	1	4
14			NLA - Bracket, Switch Mounting, Black	1	2
15			Washer (1/4 x 1/2 x 1/16")	1	4
16			Locknut (1/4-20)	1	4
17	B	1125770-NLA	NLA - Kit, Switch Mounting Hardware	1	2
18			Screw, Hex Head w/ Patch (1/4-20 x 1/2")	1	2
19			NLA - Bracket, Switch Mounting, Black	1	1
20			Washer (1/4 x 1/2 x 1/16")	1	2
21			Locknut (1/4-20)	1	2
22	C	1133130-NLA	NLA - Kit, Seat Pan Wiring Brackets w/ Hardware	2	1
23			NLA - Bracket, Seat Pan Wiring, Black	1	2
24			Screw, Phillips Pan Head Tap (#10-32 x 1/2")	1	4
25		1119418	Cable, Auxiliary Power	1	1
26	E	1142599-NLA	Kit, MK5 SAC To MK5 TAC Conversion For Conventional Recline	1	1
27			NLA - Controller, MK5 TAC	1	1
28			Screw, Hex Head w/ Patch (1/4-20 x 1/2")	1	4
29			Washer (1/4 x 1/2 x 1/16")	1	6
30			NLA - Screw, Phillips Pan Head w/ Patch (#10-32 x 3/8")	1	2
31			T-Nut (1/4-20)	1	2
32			Shroud, TRECM/TAC Recline Cover	1	1
33			Screw, Phillips Pan Head Tap (#10-32 x 3/8")	1	3
34			NLA - Bracket, TRECM/TAC Controller/Shroud Mounting, Black	1	1
35			NLA - Harness, Drive Lockout Mercury Free Ball Switch	1	2

MK5 TAC, Shroud Cover and Mercury Free Switches

Conventional Recline & Recline w/ BPO Option

(After 1/5/06)

As of 7/1/2009, switches are mercury free.

Item Number	Note	Part Number	Description	Quantity Per	
				Package	Assembly
13			NLA - Bracket, Switch Mounting, Black	1	1
15			Locknut (1/4-20)	1	2
			Tie Wrap (11-1/2" L)	1	10
			Tie Wrap (5-5/8" L)	1	10
			NLA - Instruction Sheet, MK5 SAC To MK5 TAC Conversion For Formula (Contoura Tilt or Recline) & (Conventional Tilt or Recline) on TDX	1	1
	E	1142599E-NLA	NLA - Reconditioned - MK5 SAC To MK5 TAC Conversion For Conventional Kit Recline	1	1
			NLA - WARR RPLMT - Controller, MK5 TAC	1	1
			Screw, Hex Head w/ Patch (1/4-20 x 1/2")	1	4
			Washer (1/4 x 1/2 x 1/16")	1	4
			NLA - Screw, Phillips Pan Head w/ Patch (#10-32 x 3/8")	1	2
			T-Nut (1/4-20)	1	2
			Shroud, TRECM/TAC Recline Cover	1	1
			Screw, Phillips Pan Head Tap (#10-32 x 3/8")	1	3
			NLA - Bracket, TRECM/TAC Controller/Shroud Mounting, Black	1	1
			NLA - Harness, Drive Lockout Mercury Free Ball Switch	1	2
			NLA - Bracket, Switch Mounting, Black	1	1
			Locknut (1/4-20)	1	2
			Tie Wrap (11-1/2" L)	1	10
			Tie Wrap (5-5/8" L)	1	10
			NLA - Instruction Sheet, MK5 SAC To MK5 TAC Conversion For Formula (Contoura Tilt or Recline) & (Conventional Tilt or Recline) on TDX	1	1
	F	1095503-NLA	NLA - Package, Tie Wrap (5-5/8" L)	10	1
	F	1095502-NLA	NLA - Package, Tie Wrap (11-1/2" L)	10	1
	F	1141486-NLA	NLA - Instruction Sheet, MK5 SAC To MK5 TAC Conversion For Formula (Contoura Tilt or Recline) & (Conventional Tilt or Recline) on TDX	1	1
NOTE: A - Includes items 3-9 B - Includes items 12-15 C - Includes items 17-18 D - When converting a MK5 SAC to a MK5 TAC, refer to the Conversion Kit part # 1142599. Conversion Kit includes all parts needed to convert a (Conventional Recline) E - Not Shown. Kit components for Conventional Recline Only uses items 1, 3-10, 12-15, Cable Ties and Instruction Sheet F - Not Shown					