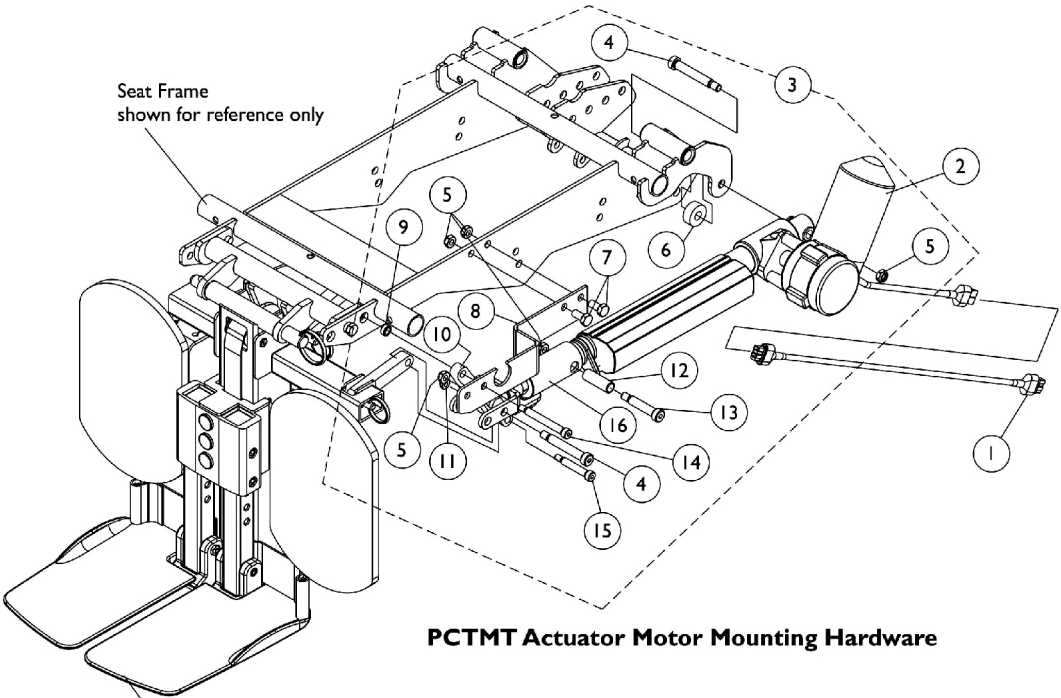
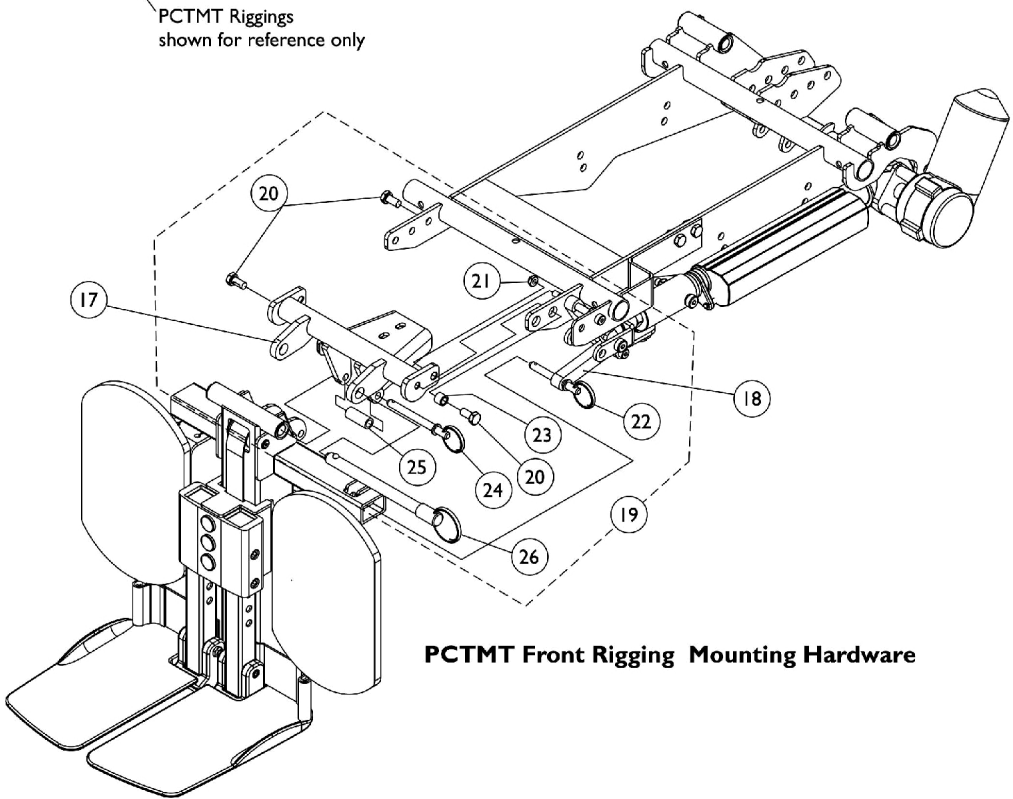


**Power Center Mount Rigging Mounting Hardware,  
PCTMT/PCTMT-L  
Conventional and Contoura Seating**



**PCTMT Actuator Motor Mounting Hardware**



**PCTMT Front Rigging Mounting Hardware**

# Power Center Mount Rigging Mounting Hardware, PCTMT/PCTMT-L Conventional and Contoura Seating

Item Number	Note	Part Number	Description	Quantity Per	
				Package	Assembly
1		1125783-NLA	NLA - Harness, PCTMT Actuator Extension To TRECM	1	1
2	D	1125699-NLA	NLA - Motor, PCTMT Actuator	1	1
2	C,C1,D	1146352-NLA	NLA - Motor, PCTMT Actuator - MK6i	1	1
3	A	1128351-NLA	NLA - Kit, PCTMT Actuator Motor Mounting Hardware	1	1
4			Screw, Shoulder Hex Socket (3/8 x 2", 5/16-18)	1	2
5			Locknut (5/16-18)	1	5
6			NLA - Stand-Off, Actuator Motor	1	1
7			Screw, Hex Head w/ Patch (5/16-18 x 5/8")	1	2
8			NLA - Bracket, PCTMT Mounting, Black	1	1
9			Spacer (15/32 x 5/16 x 3/16)	1	1
10			Link, Plate, Black	1	1
11			Locknut (1/4-20)	1	1
12			NLA - Bushing (3/8 x 1/2 x 1-7/16")	1	1
13			Screw, Shoulder Hex Socket Head (3/8 x 1-1/2", 5/16-18)	1	1
14			NLA - Screw, Shoulder Hex Socket Head (5/16" x 2-1/4", 1/4-20)	1	1
15			NLA - Screw, Socket Head Shoulder (5/16 x 1-1/2", 1/4-20)	1	1
16			NLA - Adjustable Clevis Rigging Assembly	1	1
17		1124706-NLA	NLA - Support, PCTMT Rigging (16"-19" D)	1	1
17		1125675-NLA	NLA - Support, PCTMT Rigging (20"-22" D)	1	1
18		1125629-NLA	NLA - Plate, Link 16"-19" Deep	1	1
18		1125659-NLA	NLA - Plate, Link 20"-22" Deep	1	1
19	B	1128352-NLA	NLA - Kit, PCTMT Rigging Mounting Hardware	1	1
20			Screw, Hex Head w/ Patch (5/16-18 x 5/8")	1	3
21			Locknut (1/4-20)	1	1
22			NLA - Pin, Quick Release (1-3/4" Long)	1	1
23			Spacer (5/16 x 7/16 x 3/8")	1	1
24			NLA - Pin, Quick Release (2-1/2" Long)	1	1
25			NLA - Tube, Drive Link	1	1
26			NLA - Pin, Quick Release (5" Long)	1	1
NOTE: A - Includes items 4-16 B - Includes items 20-26 C - For MK6i Electronics only. Includes the Actuator Motor, Bushings and the Integrated Actuator Module (IAM) attached to the motor. The IAM is not available separately. NOTE: Part # 1140035 referenced on the motor is not available, refer to part # 1146352. C1 - The Actuator Motor does not require the Actuator Extension Harness item #1 D - Includes the Actuator Motor and Bushings. NOTE: Part # 1125698 referenced on the motor is not available, refer to part # 1125699.					