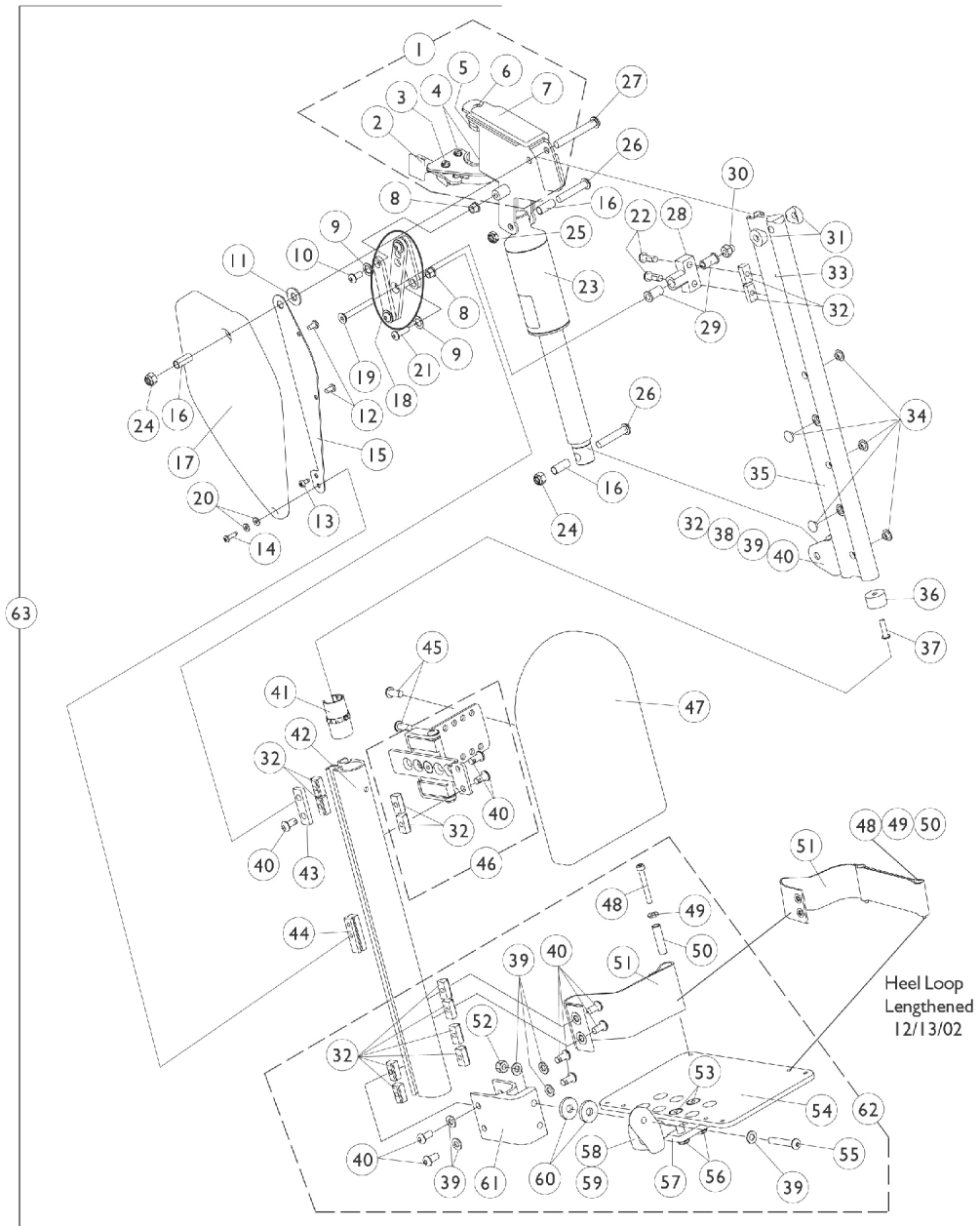


Power Articulating Legrest POWELR18/POWELR20 (Before 9/15/01)



Power Articulating Legrest POWELR18/POWELR20 (Before 9/15/01)

Item Number	Note	Part Number	Description	Quantity Per	
				Package	Assembly
1	A,G	1101112-NLA	NLA - Legrest Support Assembly, Sector, Black - Right	1	1
1	A,G	1101113-NLA	NLA - Legrest Support Assembly, Sector, Black - Left	1	1
2		1025454	Housing, Latch - Right	1	1
2		1025455	Housing, Latch - Left	1	1
3		7930314	Package, Screw, Slotted Hex Washer Head (#10-32 x 1/2")	1	1
4		1025451	Screw, Slotted Hex Washer Head (#10-32 x 5/8")	25	2
5		1099685	Plug, Pivot	1	1
6		1091870	Screw, Socket Button Head w/ Patch (1/4-20 x 3/4")	1	1
7	G	1099694-NLA	NLA - Pad, Cushion - Right	1	1
7	G	1099695-NLA	NLA - Pad, Cushion - Left	1	2
8		1099671	Bearing, Flange (1/4 x 5/16" Long)	1	2
9		1040755	Spacer, Nylon (3/8 x 7/8 x 1/32")	1	1
10		1006773-NLA	NLA - Screw, Socket Button Head (1/4-20 x 1/2")	1	1
11		1012371	Washer, Nylon (3/8 x 7/8 x 1/16")	1	2
12		1022597	Screw, Phillips Pan Head Tap (#10-32 x 3/8")	1	1
13		1025729	Screw, Phillips Pan Head Tap (#8-32 x 3/8")	1	1
14		1014386-NLA	NLA - Screw, Phillips Pan Head (#8-32 x 5/8")	1	1
15	G	1099699-NLA	NLA - Bracket, Cover	1	3
16	G	1099687-NLA	NLA - Sleeve (5/16 x 3/8 x 7/8")	1	1
17	G	1099692-NLA	NLA - Cover, Legrest Support - Right	1	1
17	G	1099693-NLA	NLA - Cover, Legrest Support - Left	1	1
18		1102934	Linkage Assembly, Power Leg	1	1
19		60285X012-NLA	NLA - Screw, Socket Flat Head (1/4-20 x 2")	1	1
20		1043599-NLA	NLA - Washer, Flat (5/32 x 3/8 x 1/32")	1	2
21		1009838	Screw, Socket Button (1/4-20 x 3/4")	1	1
22		1091870	Screw, Socket Button Head w/ Patch (1/4-20 x 3/4")	1	2
23		1101398-NLA	NLA - Motor, Actuator	1	1
24		1026158	Locknut (5/16-18)	1	2
25		1028769	Locknut (5/16-18)	1	1
26		1101267-NLA	NLA - Screw, Socket Button Head (5/16-18 x 1-1/2")	1	2
27		1101214-NLA	NLA - Screw, Socket Button Head (5/16-18 x 2-1/2")	1	1
28		1099667-NLA	NLA - Block, Pivot	1	1
29		1099684	Bearing, Flange (1/4 x 3/4" Long)	1	2
30		1044214	Nut, Hex with Nylon Cap (1/4-20)	1	1
31		0175600	Spacer, Coved (5/16 x 3/4 x 3/8")	1	2
32		1082699	T-Nut (1/4-20)	1	14
33		1038785-NLA	NLA - Pin, Roll (1/8 x 3/8")	1	1
34		1101883	Glide	1	5
35	B,G	1104102-NLA	NLA - Extrusion, Internal Slide - Short (16-3/4" L)	1	1
35	B,H	1104104-NLA	NLA - Extrusion, Internal Slide Long (18-3/4" L)	1	1
36		1099702	Glide, Internal	1	1
37		1018846	Screw, Socket Button Head (#10-24 x 3/4")	1	1

Power Articulating Legrest POWELR18/POWELR20 (Before 9/15/01)

Item Number	Note	Part Number	Description	Quantity Per	
				Package	Assembly
38	G	1099698-NLA	NLA - Bracket, Actuator	1	1
39		1026907	Washer (1/4 x 1/2 x 1/16")	1	8
40		1100023	Screw, Button Head w/ Patch (1/4-20 x 1/2")	1	11
41	G	1099686-NLA	NLA - Bearing, Linear	1	1
42		1099676-NLA	NLA - Extrusion, External - Short (14-1/2" L)	1	1
42		1099679-NLA	NLA - Extrusion, External - Long (16-1/2" L)	1	1
43		1099665-NLA	NLA - Plate, Side Pivot	1	1
44	G	1099666-NLA	NLA - Block, Slide	1	1
45		7930335-NLA	NLA - Package, Screw, Phillips Pan Head (#10-32 x 1/2")	25	2
46	G	1101116-NLA	NLA - Calf Pad Bracket Assembly, Black	1	1
47		88804529X003	Pad, Legrest, Vinyl - Right	1	1
47		88804529X004	Pad, Legrest, Vinyl - Left	1	1
48		1023965-NLA	NLA - Screw, Socket Head (#10-32 x 1-1/2")	1	2
49		1028516	Washer, Steel (3/16 x 7/16 x 1/16")	1	2
50		1015629-NLA	NLA - Bushing	1	2
51	F	1101268	Heel Loop Assembly - Right	1	1
51	F	1101269	Heel Loop Assembly - Left	1	1
52		7930333	Locknut (1/4-20)	25	1
53		1029545	Screw, Socket Flat Head (1/4-20 x 3/4")	1	2
54		1060427-NLA	NLA - Footplate, Adjustable Angle, Large, Black (5-1/4" W x 8" L)	1	1
55		1008495	Screw, Socket Button Head (1/4-20 x 1-1/2")	1	1
56		1082686	Nut, Barrel, Hex Head (1/4-20 x 11/16")	1	2
57		1058517	Clamp, Footplate	1	1
58		1052102	Hinge, Footplate - Right	1	1
58		1052103	Hinge, Footplate - Left	1	1
59		1048816	Screw, Nylon Adjustment (1/2-13 x 7/8")	1	1
60		7930313	Package, Washer, Nylon (5/16 x 7/8 x 1/8")	25	2
61		1099678	Extrusion, Footplate Adapter	1	1
62	D	1101114	Footplate Assembly, Adjustable Angle, Black - Right (5-1/4" W)	1	1
62	D	1101115	Footplate Assembly, Adjustable Angle, Black - Left (5-1/4" W)	1	1
63	C,E	1099704-NLA	NLA - Legrest, Power Articulating, Sector, Black, Short (13"-18" Range) - Right	1	1
63	C,E	1099705-NLA	NLA - Legrest, Power Articulating, Sector, Black, Short (13"-18" Range) - Left	1	1
63	C,E	1099706-NLA	NLA - Legrest Assembly, Power Articulating, Sector, Black, Long (15"-20" Range) - Right	1	1
63	C,E	1099707-NLA	NLA - Legrest Assembly, Power Articulating, Sector, Black, Long (15"-20" Range) - Left	1	1

Power Articulating Legrest POWELR18/POWELR20 (Before 9/15/01)

NOTE: A - Includes items 2-7
B - Includes items 32, 33, 38-40
C - Power articulating legrest before 9/15/01 NLA. See power articulating legrest dated after 7/26/04. Legrest must be ordered in pairs to match.
D - Includes items 32, 39, 40, 48-61
E - Includes items 1, 8-32,7, 41-47, 62
F - Heel loop service part was lengthened 12/13/02. Verify with customer if longer heel loop is present. Order in pairs when needed along with 2 each of items 48, 49 and 50.
G - No longer available, see item 63 part numbers 1099704 and 1099705
H - No longer available, see item 63 part numbers 1099706 and 1099707