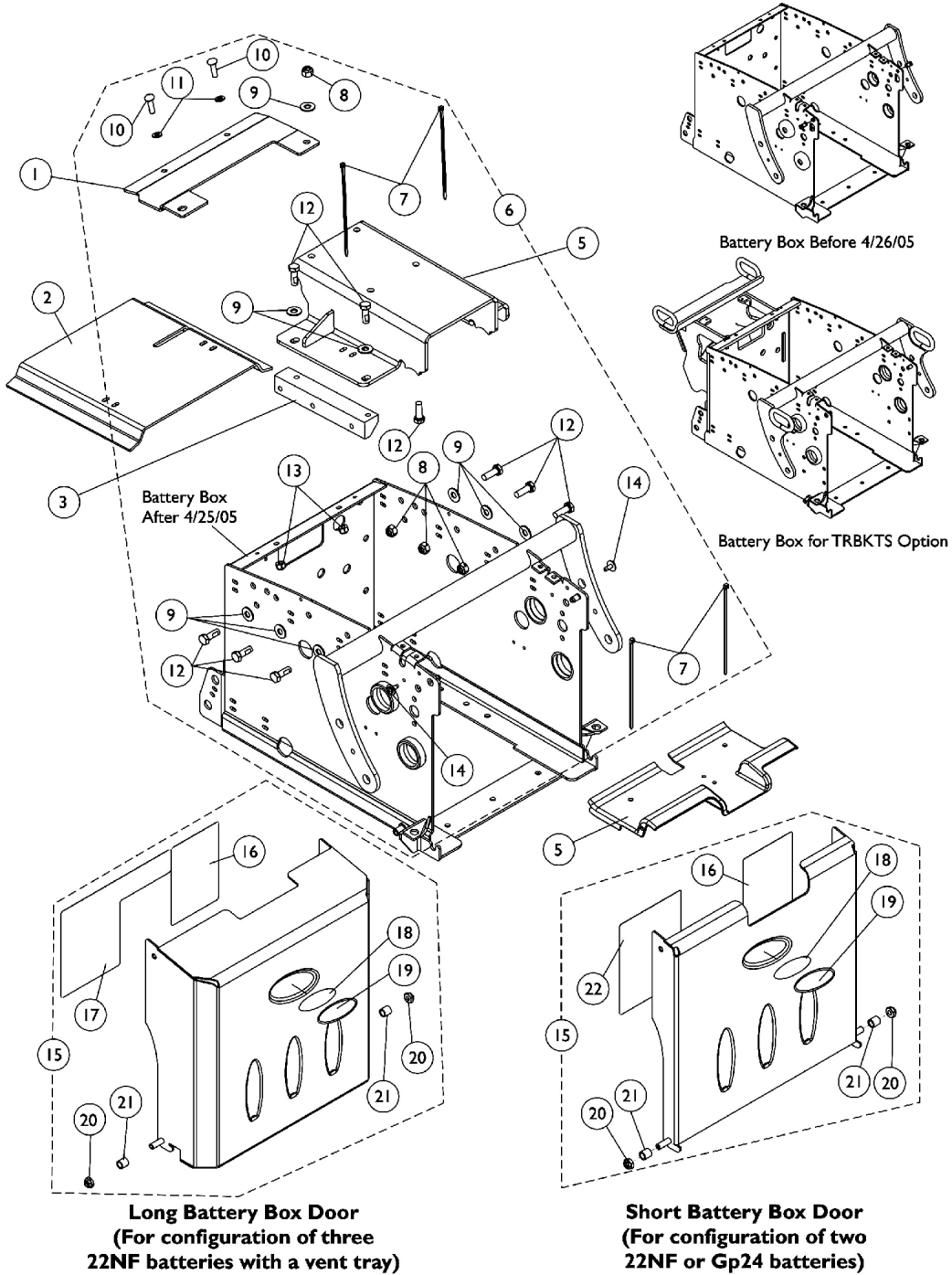


Battery Box Hardware and Door Assembly

Non-Elevate

For Formula Conventional and Contoura Seating

The Battery Boxes are non-serviceable parts in the field. Wheelchair must be returned to Invacare for repair. Call Technical Services for assistance (1-800-832-4707)



Battery Box Hardware and Door Assembly

Non-Elevate

For Formula Conventional and Contoura Seating

The Battery Boxes are non-serviceable parts in the field. Wheelchair must be returned to Invacare for repair. Call Technical Services for assistance (1-800-832-4707)

Item Number	Note	Part Number	Description	Quantity Per	
				Package	Assembly
1	E	1128731-NLA	NLA - Bracket, Frame Stiffener, Black	1	1
2	F	1124725-NLA	NLA - Shroud, Battery Box Isolation	1	1
3		1125639-NLA	NLA - Block, Side Support	1	1
4		1124668-NLA	NLA - Shroud, Front Battery Box	1	1
5	E	1128729-NLA	NLA - Bracket, Seat Frame Mounting, Black LOW 0° = 18" STF; 5° = (19-3/4" STF For 16-19" Deep) or (21-1/4" STF For 20-22" Deep)	1	1
5	E	1128730-NLA	NLA - Bracket, Seat Frame Mounting, Black TALL 0° = 19-1/4" STF; 5° = (21" STF For 16-19" Deep) or (21-1/4" STF For 20-22" Deep)	1	1
6	A	1125738	NLA - Kit, Non-Elevate Battery Box Assembly Hardware	1	1
7			Tie Wrap (5-5/8" L)	1	4
8			Locknut (5/16-18)	1	4
9			Washer, Steel (5/16 x 3/4 x 1/16")	1	9
10			NLA - Bolt, Hex Head Cap (1/4-20 x 3/4")	1	2
11			Washer (1/4 x 1/2 x 1/16")	1	2
12			NLA - Screw, Hex Head w/ Patch (5/16-18 x 7/8")	1	9
13			Locknut (1/4-20)	1	2
14			Screw, Phillips Pan Head Tap (#10-32 x 1/2")	1	2
15	B,D,G	1113357	NLA - Kit, Battery Box Door Assembly, 22NF Short	1	1
16			NLA - Label, 22NF Terminal Configuration Warning	1	1
18			NLA - Decal, Blank Logo	1	1
19			NLA - Decal, Invacare Medallion - Large	1	1
20			Locknut (1/4-20)	1	2
21			NLA - Sleeve, Door Pivot	1	2
22			NLA - Label, 22NF Battery Install/Remove	1	1
15	B,D	1113127-NLA	NLA - Kit, Battery Box Door Assembly, GP24 Short	1	1
16			NLA - Label, Terminal Configuration Warning, GP24	1	1
18			NLA - Decal, Blank Logo	1	1
19			NLA - Decal, Invacare Medallion - Large	1	1
20			Locknut (1/4-20)	1	2
21			NLA - Sleeve, Door Pivot	1	2
22			Label, Battery Install/Remove, GP24	1	1
15	C,D	1121072-NLA	Kit, Battery Box Door Assembly, 22NF Long (For Vent)	1	1
16			NLA - Label, 22NF Terminal Configuration Warning	1	1
17			NLA - Label, 3 Battery Configuration Warning	1	1
18			NLA - Decal, Blank Logo	1	1
19			NLA - Decal, Invacare Medallion - Large	1	1
20			Locknut (1/4-20)	1	2
21			NLA - Sleeve, Door Pivot	1	2

Battery Box Hardware and Door Assembly

Non-Elevate

For Formula Conventional and Contoura Seating

The Battery Boxes are non-serviceable parts in the field. Wheelchair must be returned to Invacare for repair. Call Technical Services for assistance (1-800-832-4707)

NOTE: A - Includes Battery Box Door along w/ Items 7-14.
B - Includes Battery Box Door along w/ Items 16 and 18-22.
C - Includes Battery Box Door along w/ Items 16-21.
D - Blank Logo Decal is no longer available and no longer required for item number 19 Invacare Medallion Decal.
E - Chairs manufactured before 8/30/04 must have items 1 and 5 ordered together in order for the mounting holes to line up properly
F - No longer available as a service part.
G - Item is no longer available from the Invacare Service Parts Department. Refer to the Invacare Website under "Product Literature Search". Enter the part number in the "Keywords" field and download a free PDF version copy.