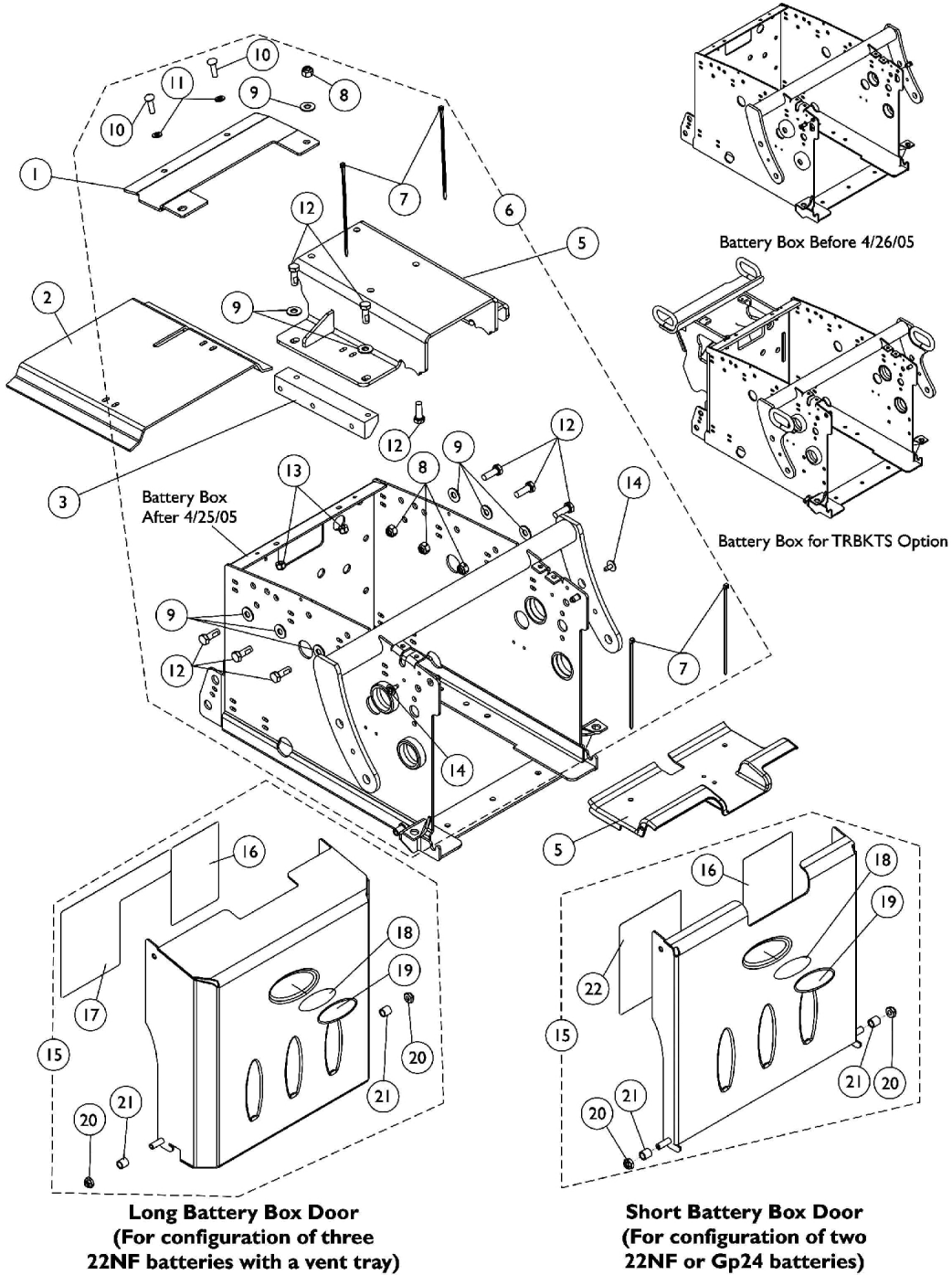


Battery Box Hardware and Door Assembly

Non-Elevate

For Formula Conventional and Contoura Seating

The Battery Boxes are non-serviceable parts in the field. Wheelchair must be returned to Invacare for repair. Call Technical Services for assistance (1-800-832-4707)



Battery Box Hardware and Door Assembly

Non-Elevate

For Formula Conventional and Contoura Seating

The Battery Boxes are non-serviceable parts in the field. Wheelchair must be returned to Invacare for repair. Call Technical Services for assistance (1-800-832-4707)

Item Number	Note	Part Number	Description	Quantity Per	
				Package	Assembly
1	E	1128731-NLA	NLA - Bracket, Frame Stiffener, Black	1	1
2	F	See Note	See Footnote	1	1
3		1125639-NLA	NLA - Block, Side Support	1	1
4		1124668-NLA	NLA - Shroud, Front Battery Box	1	1
5	E	1128729-NLA	NLA - Bracket, Seat Frame Mounting, Black LOW 0° = 18" STF; 5° = (19-3/4" STF For 16-19" Deep) or (21-1/4" STF For 20-22" Deep)	1	1
5	E	1128730-NLA	NLA - Bracket, Seat Frame Mounting, Black TALL 0° = 19-1/4" STF; 5° = (21" STF For 16-19" Deep) or (21-1/4" STF For 20-22" Deep)	1	1
6	A	1125738-NLA	NLA - Kit, Non-Elevate Battery Box Assembly Hardware	1	1
7			Tie Wrap (5-5/8" L)	1	4
8			Locknut (5/16-18)	1	4
9			Washer, Steel (5/16 x 3/4 x 1/16")	1	9
10			NLA - Bolt, Hex Head Cap (1/4-20 x 3/4")	1	2
11			Washer (1/4 x 1/2 x 1/16")	1	2
12			NLA - Screw, Hex Head w/ Patch (5/16-18 x 7/8")	1	9
13			Locknut (1/4-20)	1	2
14			Screw, Phillips Pan Head Tap (#10-32 x 1/2")	1	2
15	B,D,G	1113357	NLA - Kit, Battery Box Door Assembly, 22NF Short	1	1
16			NLA - Label, 22NF Terminal Configuration Warning	1	1
18			NLA - Decal, Blank Logo	1	1
19			NLA - Decal, Invacare Medallion - Large	1	1
20			Locknut (1/4-20)	1	2
21			NLA - Sleeve, Door Pivot	1	2
22			NLA - Label, 22NF Battery Install/Remove	1	1
15	B,D	1113127-NLA	NLA - Kit, Battery Box Door Assembly, GP24 Short	1	1
16			NLA - Label, Terminal Configuration Warning, GP24	1	1
18			NLA - Decal, Blank Logo	1	1
19			NLA - Decal, Invacare Medallion - Large	1	1
20			Locknut (1/4-20)	1	2
21			NLA - Sleeve, Door Pivot	1	2
22			Label, Battery Install/Remove, GP24	1	1
15	C,D	1121072-NLA	Kit, Battery Box Door Assembly, 22NF Long (For Vent)	1	1
16			NLA - Label, 22NF Terminal Configuration Warning	1	1
17			NLA - Label, 3 Battery Configuration Warning	1	1
18			NLA - Decal, Blank Logo	1	1
19			NLA - Decal, Invacare Medallion - Large	1	1
20			Locknut (1/4-20)	1	2
21			NLA - Sleeve, Door Pivot	1	2

Battery Box Hardware and Door Assembly

Non-Elevate

For Formula Conventional and Contoura Seating

The Battery Boxes are non-serviceable parts in the field. Wheelchair must be returned to Invacare for repair. Call Technical Services for assistance (1-800-832-4707)

NOTE: A - Includes Battery Box Door w/ Items 7-14.
B - Includes Battery Box Door w/ Items 16 and 18-22.
C - Includes Battery Box Door w/ Items 16-21.
D - Blank Logo Decal is no longer available and no longer required for item number 19 Invacare Medallion Decal.
E - Chairs manufactured before 8/30/04 must have items 1 and 5 ordered together in order for the mounting holes to line up properly
F - No longer available as a service part.
G - Part number 1114826 is no longer available from the Invacare Service Parts Department. Refer to the Invacare Website under "Product Literature Search". Enter the part number in the "Keywords" field and download a free PDF version copy.