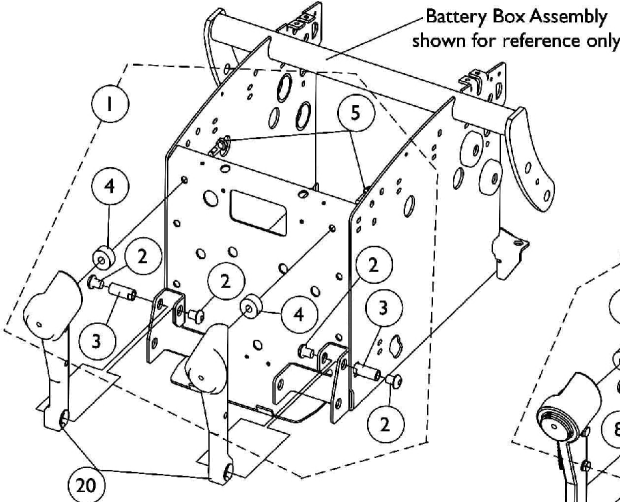
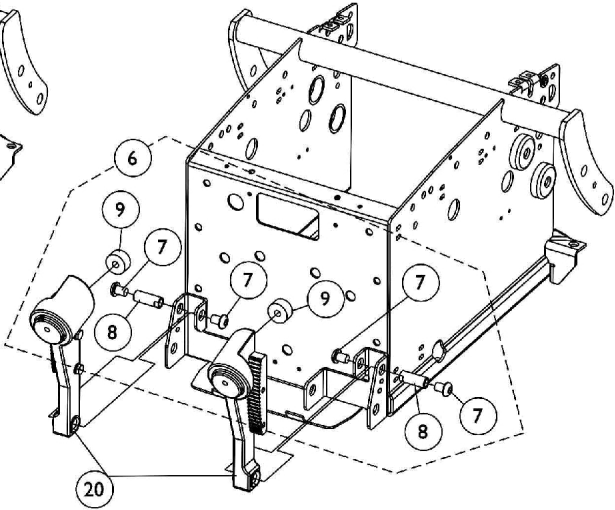


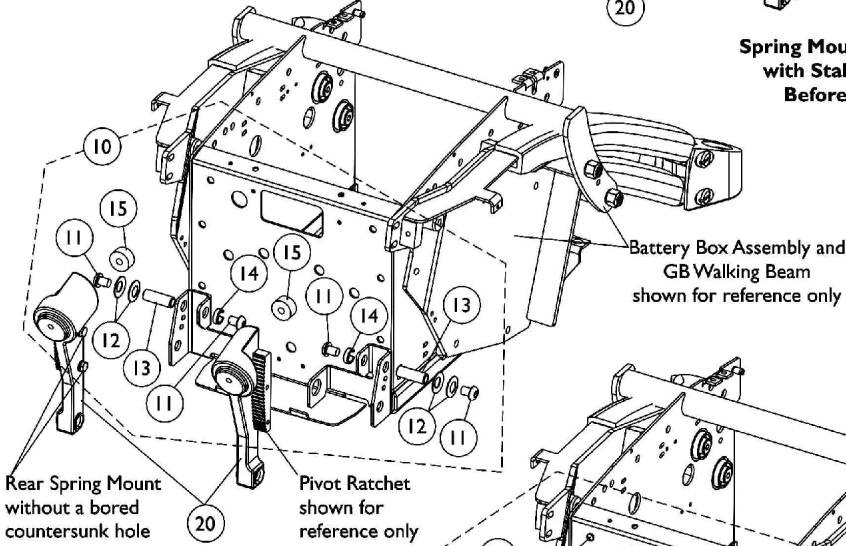
Rear Spring Mount Assembly



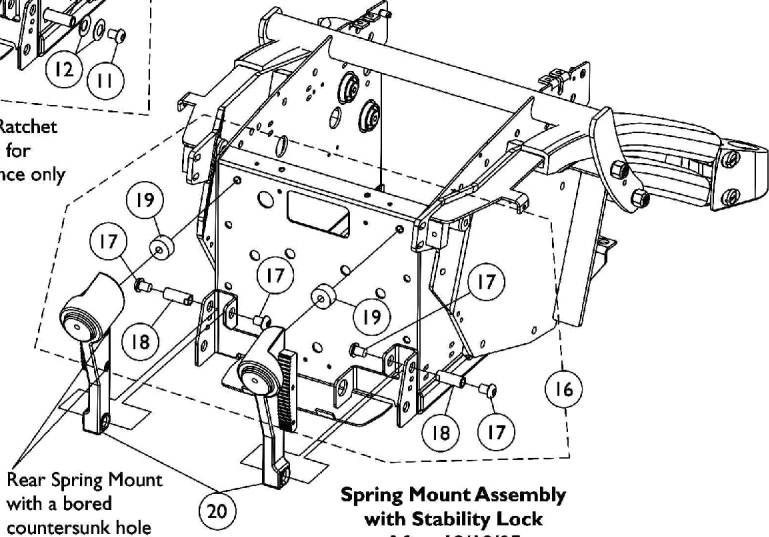
**Spring Mount Assembly without Stability Lock
Standard on TDX3 Before 10/20/03**



**Spring Mount Assembly
with Stability Lock
Before 4/26/05**



**Spring Mount Assembly
with Stability Lock
4/26/05-12/18/05**



**Spring Mount Assembly
with Stability Lock
After 12/18/05**

Rear Spring Mount Assembly

Item Number	Note	Part Number	Description	Quantity Per	
				Package	Assembly
1	A	1120351-NLA	Kit, Rear Spring Mounting Hardware without Stability Lock	2	1
2			NLA - Screw, Socket Button Head (3/8-24 x 1/2")	1	4
3			NLA - Pivot, Stability Lock	1	2
4			NLA - Spacer (3/4 x 1 x 1/2")	1	2
5			NLA - Screw, Hex Head w/ Patch (5/16-18 x 1")	1	2
6	B	1121122-NLA	Kit, Rear Spring Mounting Hardware with Stability Lock	2	1
7			NLA - Screw, Socket Button Head (3/8-24 x 1/2")	1	4
8			NLA - Pivot, Stability Lock	1	2
9			NLA - Damper, Yellow Polyurethane	1	2
10	C	1128398-NLA	Kit, Rear Spring Mounting Hardware with Stability Lock	2	1
11			NLA - Screw, Socket Button Head (3/8-24 x 1/2")	1	4
12			NLA - Washer, Nylon (35/64 x 1 x 1/16")	1	4
13			Bushing, Rear Spring Pivot	1	2
14			NLA - Spacer (1/2 x 11/16 x 7/32")	1	2
15			NLA - Damper, Yellow Polyurethane	1	2
16	D	1121122-NLA	Kit, Rear Spring Mounting Hardware with Stability Lock	2	1
17			NLA - Screw, Socket Button Head (3/8-24 x 1/2")	1	4
18			NLA - Pivot, Stability Lock	1	2
19			NLA - Damper, Yellow Polyurethane	1	2
20	E,F,F1	8881113360-NL A	NLA - Mount, Spring - Rear/ Right	1	1
20	E,F,F1	8881113361-NL A	NLA - Mount, Spring - Rear/ Left	1	1

NOTE: A - Includes items 2-5. Standard on TDX3 before 10/20/03
 B - Before 4/26/05. Includes items 7-9. Upgrade on TDX3 before 10/20/03 and standard on TDX3 after 10/19/03. Stability Lock always came standard on TDX4 and TDX5 models.
 C - Between 4/26/05-12/18/05
 D - After 12/18/05
 E - Specify frame color when ordering. See page titled "Frame Finishes and Touch-Up Paints".
 F - After 12/18/05 the Rear Spring Mount was revised with a bored countersunk hole that mounts the Pivot Ratchet. Pivot Ratchet with Hardware dated after 12/18/05 must be ordered when replacing a Rear Spring Mount that doesn't have a bored countersunk hole.
 F1 - Verify with customer. Rear Spring Mounts do not have to be ordered in pairs.