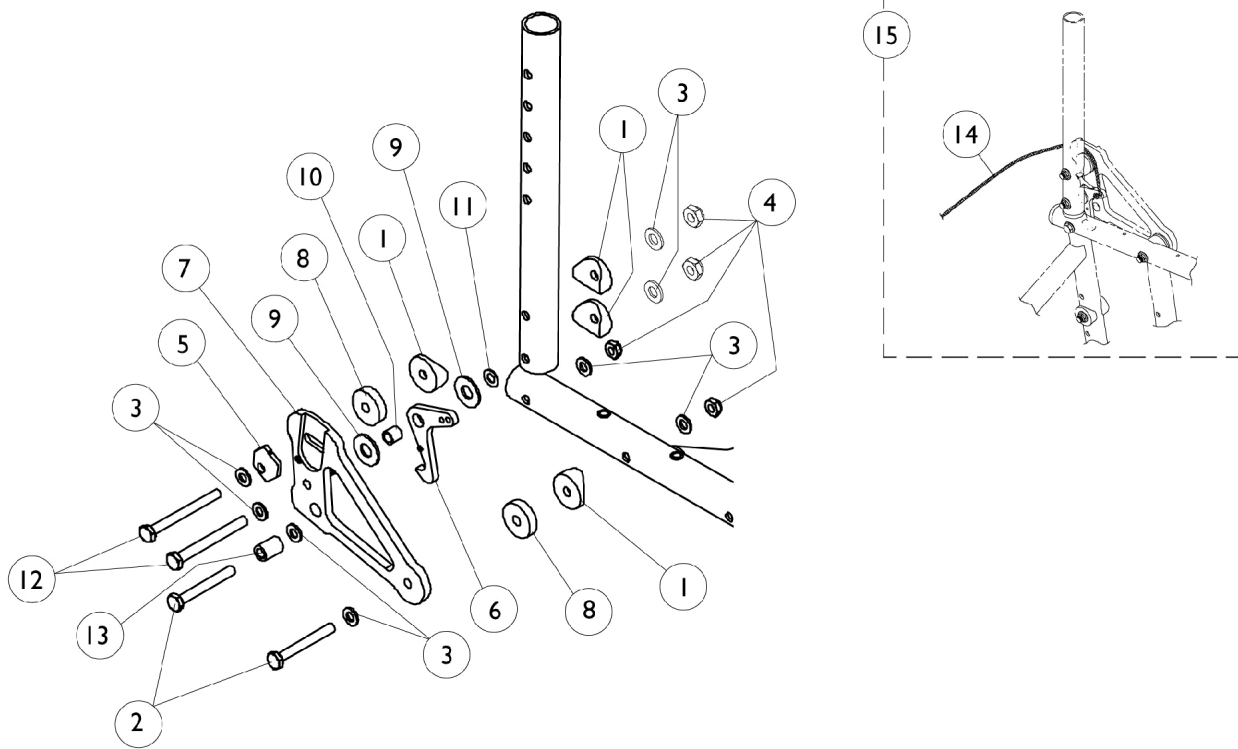


Rear Upright Tube Mounting Hardware



Rear Upright Tube Mounting Hardware

Item Number	Note	Part Number	Description	Quantity Per	
				Package	Assembly
1		40157X020	Spacer, Coved (1/4 x 1 x 9/16")	1	4
2		1055349	Screw, Hex Head (1/4-28 x 2")	1	4
3		1026907	Washer (1/4 x 1/2 x 1/16")	1	16
4		1025765	Locknut (1/4-28)	1	4
5		1039232-NLA	NLA - Cam, Adjustment	1	1
6		1081354-NLA	NLA - Latch, Backrest - Right	1	1
6		1081355-NLA	NLA - Latch, Backrest - Left	1	1
7		1079920-NLA	NLA - Plate, Backrest Support -Right	1	1
7		1079921-NLA	NLA - Plate, Backrest Support -Left	1	1
8		1040776-NLA	NLA - Spacer, Nylon (1/4 x 1 x 1/4")	1	2
9		1012371	Washer, Nylon (3/8 x 7/8 x 1/16")	1	1
10		1026162	Spacer (1/4 x 3/8 x 11/32")	1	1
11		1025728	Washer (1/4 x 1/2 x 1/32")	1	1
12		1055351-NLA	NLA - Screw, Hex Head (1/4-28 x 2-1/2")	1	1
13		1039233	Spacer (1/4 x 7/16 x 5/8")	1	1
14		1141633	Cord, Nylon (6-1/2 ft.)	1	1
15	A	1041149-NLA	NLA - Kit, Backrest Hardware (Pair)	2	1
15	B	1097082-NLA	NLA - Kit, Backrest Hardware (Pair)	2	1

NOTE: A - For chairs without Half Arms. Includes items 1-11 and 13- 14.
B - For chairs with Half Arms. Includes items 1-14.