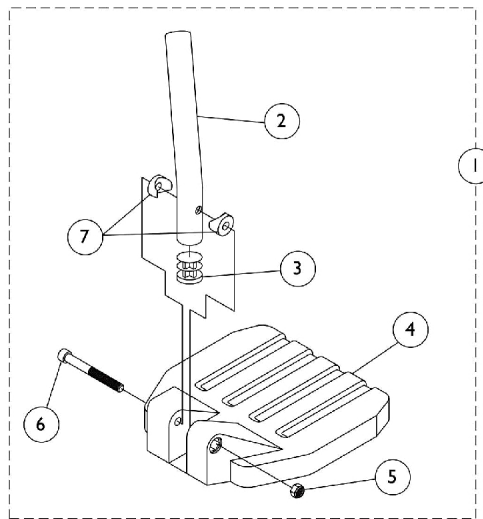
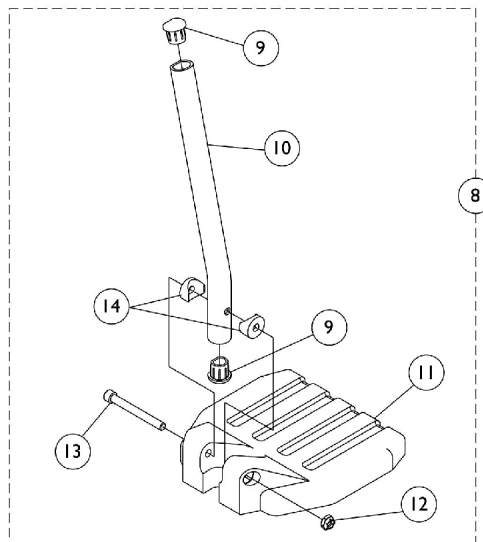


Composite Footplate and Pivot Tube Assemblies - 1651



**Used on all front riggings except
Wedge Style Elevating Legrests AT5044**



Used on Wedge Style Elevating Legrests AT5044

Composite Footplate and Pivot Tube Assemblies - 1651

Item Number	Note	Part Number	Description	Quantity Per	
				Package	Assembly
1	A	See Chart	#1 60 Degree Footrest (13-19")	1	1
1	A	See Chart	#1 70 Degree Non Tapered Footrest (14-19")	1	1
1	A	See Chart	#1 70 Degree Tapered Footrest (14-1/2-19-1/2")	1	1
1	A	See Chart	#1 AT5044 Elevating Legrest - Ratchet Style (16-20")	1	1
2	B	1120389	Tube, Pivot/Slide, Straight, Black - Long (9-7/8")	1	1
2	C	1120390	Tube, Pivot/Slide, Straight, 2" Longer ALPT, Black (11-7/8")	1	1
2	D	1120391	Tube, Pivot/Slide, Curved End, 2" Longer ALPT, Black (11-7/8")	1	1
3		1134426	Package, Plug Button, Black (3/4")	10	1
4		1026879	Footplate, Composite, Small, Black (6" W x 6" L)	1	1
4		1026880	Footplate, Composite, Medium, Black (7" W x 6" L)	1	1
4		1026881	Footplate, Composite, Large, Black (8" W x 6" L)	1	1
5		1025195	Locknut (1/4-20)	1	1
6		60285X006	Screw, Socket Head (1/4-20 x 2-1/4")	1	1
7		1025457	Spacer, Coved (1/4 x 3/4 x 11/32")	1	2
8	F	See Chart	#8 AT5044 Elevating Legrest - Wedge Style (16-20")	1	1
9		1134427	Package, Plug Button, Black, "D" Shaped (3/4")	10	1
10	E	1134428	Pivot/Slide Tube w/ D Insert, Black	1	1
10	E	1134429	Pivot/Slide Tube w/ D Insert, Black (2" Longer)	1	1
11		1026879	Footplate, Composite, Small, Black (6" W x 6" L)	1	1
11		1026880	Footplate, Composite, Medium, Black (7" W x 6" L)	1	1
11		1026881	Footplate, Composite, Large, Black (8" W x 6" L)	1	1
12		1025195	Locknut (1/4-20)	1	1
13		60285X006	Screw, Socket Head (1/4-20 x 2-1/4")	1	1
14		1025457	Spacer, Coved (1/4 x 3/4 x 11/32")	1	2
NOTE: A - Includes items 2-7 B - 70° Footrests C - 70° Footrests, and AT5044 Ratchet Style Legrests D - 60° Footrests E - AT5044 Wedge Style Legrests F - Includes items 9-14					

#1 60° Footrest (13-19") Curved End

Right/Left	Small Long 14" wide	Medium Long 15-16" wide	Large Long 17-18" wide
Right	1120416	1120418	1120420
Left	1120417	1120419	1120421

#1 70 Degree Non Tapered; 70LIFTNT Footrest (14-19") Straight

Composite Footplate and Pivot Tube Assemblies - 1651

#1 70 Degree Non Tapered; 70LIFTNT Footrest (14-19") Straight

Right/Left	Small Short 14" wide	Small 2" Longer 14" wide	Medium Short 15-16" wide	Medium 2" Longer 15-16" wide	Large Short 17-18" wide	Large 2" Longer 17-18" wide
Right	1120404	1120410	1120406	1120412	1120408	1120414
Left	1120405	1120411	1120407	1120413	1120409	1120415

#1 70 Degree Tapered Footrest (14-1/2 - 19-1/2") Straight

Right/Left	Small Short 16-17" wide	Small 2" Longer 16-17" wide	Medium Short 18" wide	Medium 2" Longer 18" wide
Right	1120404	1120410	1120406	1120412
Left	1120405	1120411	1120407	1120413

Composite Footplate and Pivot Tube Assemblies - 1651

#1 AT5044 Elevating Legrest - Ratchet Style (16-20") Curved End

Right/Left	Small Long 14" wide	Medium Long 15-16" wide	Large Long 17-18" wide
Right	1120416	1120418	1120420
Left	1120417	1120419	1120421

#8 AT5044 Elevating Legrest - Wedge Style (16-20") Curved End

Right/Left	Small Long 14" wide	Medium Long 15-16" wide	Large Long 17-22" wide
Right	1132107	1132109	1132111
Left	1132108	1132110	1132112