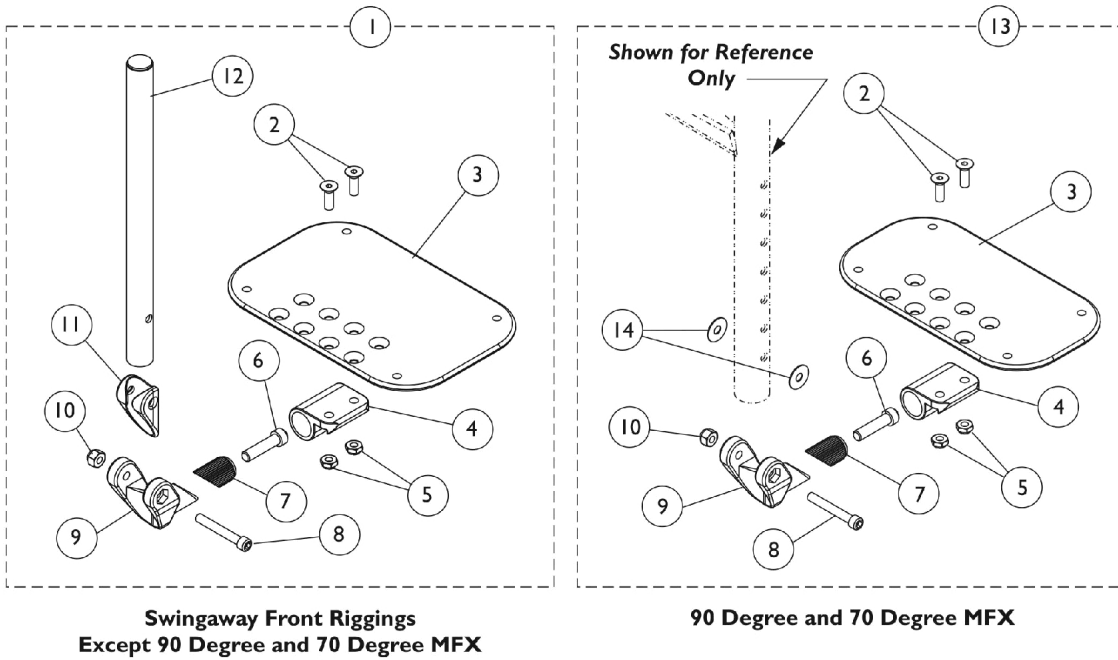
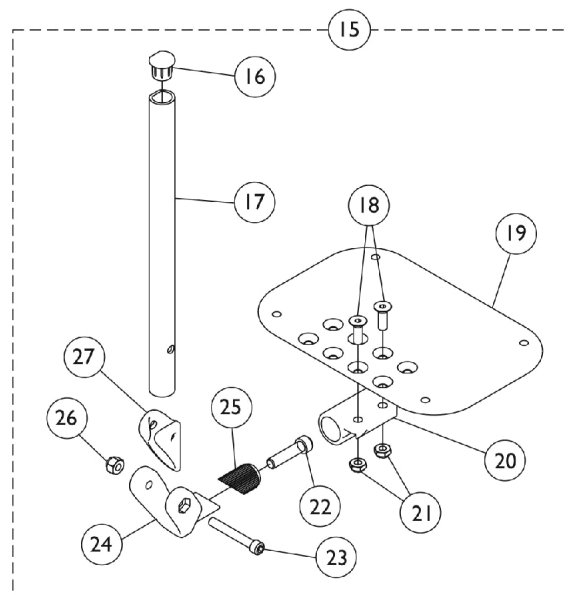


Adjustable Angle Footplate Assemblies - AT5543

70 Deg., PHW93, AT5544, PHAL4A Swingaway Supports



Used on all front riggings except Wedge Style AT5044 Elevating Legrests



Used on Wedge Style AT5044 Elevating Legrests

Adjustable Angle Footplate Assemblies - AT5543

70 Deg., PHW93, AT5544, PHAL4A Swingaway Supports

Item Number	Note	Part Number	Description	Quantity Per	
				Package	Assembly
1	D	See Chart	#1 PHW93, PH904A, 60 Degree, 70 Degree Non Tapered, 70LIFTNT, & Ratchet Style AT5044	1	1
1	D	See Chart	#1 PHAL4A Articulating Legrests	1	1
1	D	See Chart	#1 ATL4A Articulating Legrests	1	1
2		1113578	Screw, Socket Flat Head (1/4-28 x 3/4")	1	2
3	H	1113573	Footplate, Adjustable Angle, Large, Black (5-1/4" W x 8" L)	1	1
3	H	1113574	Footplate, Adjustable Angle, Extra Large, Black (6-1/4" W x 8" L)	1	1
3	H	1113575	Footplate, Adjustable Angle, XX- Large, Black (7-1/4" W x 8" L)	1	1
4		1113528	Bracket, Adjustable Angle Footplate, Black	1	1
5		1025765	Locknut (1/4-28)	1	2
6		1021344	Screw, Socket Head (5/16-18 x 1-1/2")	1	1
7		1113530	Attachment, Hinge	1	1
8		1096810	Screw, Socket Head (1/4-28 x 1-3/4")	1	1
9		1113529	Hinge, Adjustable Angle Footrest	1	1
10		1065362	Locknut (1/4-28)	1	1
11		1114688	Spacer, Hinge, Black	1	1
12	A	1114699	Tube, Pivot/Slide, Straight, Black (10-1/4")	1	1
12	B	1114700	Tube, Pivot/Slide, Straight, 2" Longer ALPT, Black (12-1/4")	1	1
12	C	1114707	Tube, Pivot/Slide, Straight, Chrome (11-7/8")	1	1
13	E	See Chart	#13 90 Degree / 70 Degree MFX and LIFTMFX Footrests	1	1
14		1025456	Washer, Nylon (3/4 x 1/4 x 1/32")	1	2
15	F	See Chart	#15 Wedge Style AT5044 Elevating Legrests	1	1
16		1134427	Package, Plug Button, Black, "D" Shaped (3/4")	10	1
17	G	1134433	Pivot/Slide Tube w/ D Insert, Black	1	1
17	G	1134432	Pivot/Slide Tube w/ D Insert, Black (2" Longer)	1	1
18		1113578	Screw, Socket Flat Head (1/4-28 x 3/4")	1	2
19		1113573	Footplate, Adjustable Angle, Large, Black (5-1/4" W x 8" L)	1	1
19		1113574	Footplate, Adjustable Angle, Extra Large, Black (6-1/4" W x 8" L)	1	1
19		1113575	Footplate, Adjustable Angle, XX- Large, Black (7-1/4" W x 8" L)	1	1
20		1113528	Bracket, Adjustable Angle Footplate, Black	1	1
21		1025765	Locknut (1/4-28)	1	2
22		1021343	Screw, Socket Head (5/16-18 x 1-1/4")	1	1
23		1096810	Screw, Socket Head (1/4-28 x 1-3/4")	1	1
24		1113529	Hinge, Adjustable Angle Footrest	1	1
25		1113530	Attachment, Hinge	1	1
26		1065362	Locknut (1/4-28)	1	1
27		1114688	Spacer, Hinge, Black	1	1

Adjustable Angle Footplate Assemblies - AT5543

70 Deg., PHW93, AT5544, PHAL4A Swingaway Supports

NOTE: A - 60°, 60° MFX, 70° Tapered, 70° Non Tapered, 70LIFTNT Footrests, and Ratchet Style AT5044 Legrest
 B - ALPT 2" Longer
 C - PHAL4A and ATL4A Articulating Legrests
 D - Includes items 2-12
 E - Includes items 2-10 & 14
 F - Includes items 16-27
 G - Wedge Style AT5044 Legrest
 H - This footplate was revised 9/2/2008 with rounder corners and accessory holes changed from 8 to 4. Recommend to replace footplate in pairs to match sides.

#1 PHW93, PH904A, 60 Degree, 70 Degree Non Tapered, 70LIFTNT, & Ratchet Style AT5044

Straight Slide Tube (10-1/4")	Right	Left
14-15" Wide (5-1/4" Footplate)	1114642	1114643
16-17" Wide (6-1/4" Footplate)	1114644	1114645
18-22" Wide (7-1/4" Footplate)	1114646	1114647
ALPT Straight Slide Tube (12-1/4")	Right	Left
14-15" Wide (5-1/4" Footplate)	1114652	1114653
16-17" Wide (6-1/4" Footplate)	1114654	1114655
18-22" Wide (7-1/4" Footplate)	1114656	1114657

#1 PHAL4A Articulating Legrests

Straight Slide Tube (10-1/4")	Right	Left
16-17" Wide (5-1/4" Footplate)	1114708	1114709
18-19" Wide (6-1/4" Footplate)	1114710	1114711
18-22" Wide (7-1/4" Footplate)	1114656	1114657

Adjustable Angle Footplate Assemblies - AT5543

70 Deg., PHW93, AT5544, PHAL4A Swingaway Supports

#1 ATL4A Articulating Legrests

Straight Slide Tube (10-1/4")	Right	Left
14-15" Wide (5-1/4" Footplate)	1114708	1114709
16-17" Wide (6-1/4" Footplate)	1114710	1114711
18-22" Wide (7-1/4" Footplate)	1114712	1114713

#13 90 Degree, 70 Degree MFX and LIFTMFX Footrests

Adjustable Angle Footplates w/o Pivot Slide Tubes

No Slide Tube - Bolts Through Support	Right	Left
14-15" Wide (5-1/4" Footplate)	1114632	1114633
16-17" Wide (6-1/4" Footplate)	1114634	1114635
18-22" Wide (7-1/4" Footplate)	1114636	1114637

#15 Wedge Style AT5044 Elevating Legrests

Straight Slide Tube (10-1/4")	Right	Left
14-15" Wide (5-1/4" Footplate)	1132061	1132062
16-17" Wide (6-1/4" Footplate)	1132063	1132064
18-22" Wide (7-1/4" Footplate)	1132065	1132066
ALPT Straight Slide Tube (12-1/4")	Right	Left
14-15" Wide (5-1/4" Footplate)	1132089	1132090
16-17" Wide (6-1/4" Footplate)	1132091	1132092
18-22" Wide (7-1/4" Footplate)	1132093	1132094