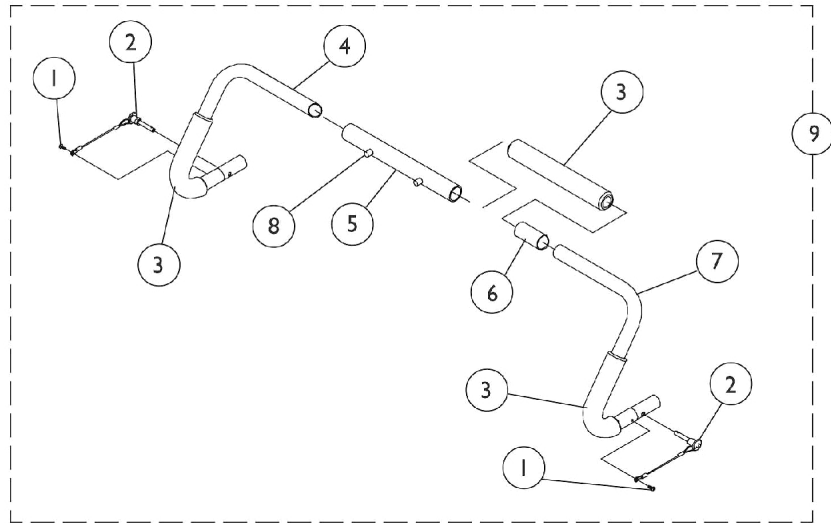
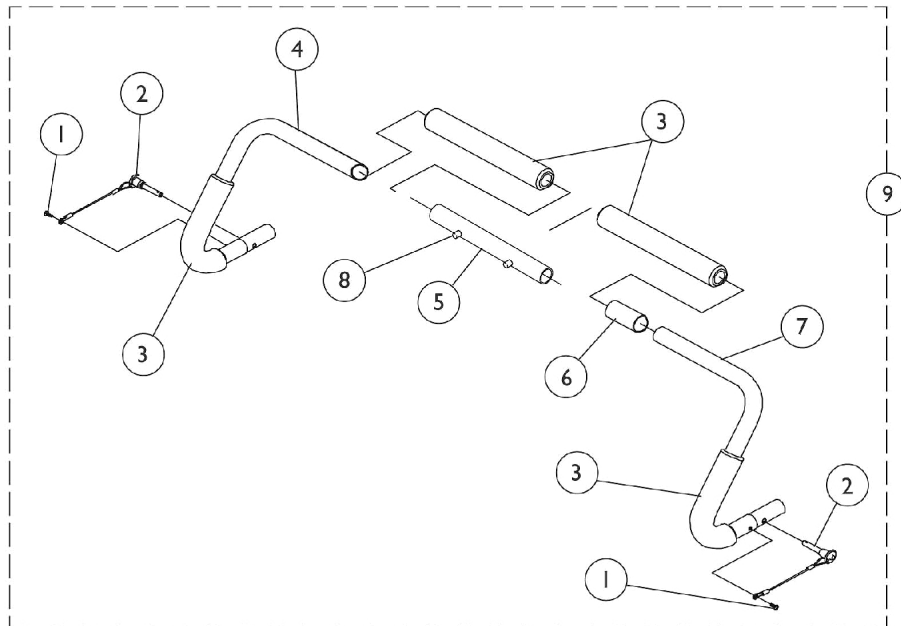


# Non-Adjustable Rigidizing Stroller Handle - 1483

Before 8/16/05



14-17" Wide Chairs



18-22" Wide Chairs

## Non-Adjustable Rigidizing Stroller Handle - 1483 Before 8/16/05

Item Number	Note	Part Number	Description	Quantity Per	
				Package	Assembly
1		1014386-NLA	NLA - Screw, Phillips Pan Head (#8-32 x 5/8")	1	2
2		1045470	Pin, Quick Release with Lanyard	1	2
3	G	1016254	Grip, Push Handle	1	4
4	A	1055228-NLA	NLA - Handle, Stroller, Black - Left	1	1
4	B	1045552-NLA	NLA - Handle, Stroller, Black - Left	1	1
5	A	1055226-NLA	NLA - Slide Tube w/ Snap Buttons Assembly, Chrome	1	1
5	C	1045361-NLA	NLA - Slide Tube w/ Snap Buttons Assembly, Short, Chrome	1	1
5	D	1045360-NLA	NLA - Slide Tube w/ Snap Buttons Assembly, Long, Chrome	1	1
6	E	See Chart	#6 Spacer Tube	1	1
7	A	1055227-NLA	NLA - Handle, Stroller, Black - Right	1	1
7	B	1045551-NLA	NLA - Handle, Stroller, Black - Right	1	1
8		40188X009	Button, Single Snap	1	2
9	F	See Chart	#9 Stroller Handle Assembly - Black	1	1

NOTE: A - 14-15" Wide Chairs  
 B - 16-22" Wide Chairs  
 C - 16-20" Wide Chairs  
 D - 21-22" Wide Chairs  
 E - See Spacer Tube Chart  
 F - See Stroller Handle Assembly Chart. Includes items 1-8.  
 G - 14-17" wide chairs require 3 ea.; 18-22" wide chairs require 4 ea.

### #6 Spacer Tube

14" Wide	15" Wide	16" Wide	17" Wide	18" Wide
1049515-NLA	1049516-NLA	Not Required	1049513-NLA	1046178-NLA
19" Wide	20" Wide	21" Wide	22" Wide	
1049514-NLA	1049515-NLA	1049516-NLA	1049517-NLA	

### #9 Stroller Handle Assembly - Black

Includes items 1-8

14" Wide	15" Wide	16" Wide	17" Wide	18" Wide
1055231-NLA	1055232-NLA	1049140	1049141-NLA	1045362
19" Wide	20" Wide	21" Wide	22" Wide	
1049142-NLA	1049143	1049144-NLA	1049145-NLA	

**Non-Adjustable Rigidizing Stroller Handle - 1483**  
**Before 8/16/05**

---