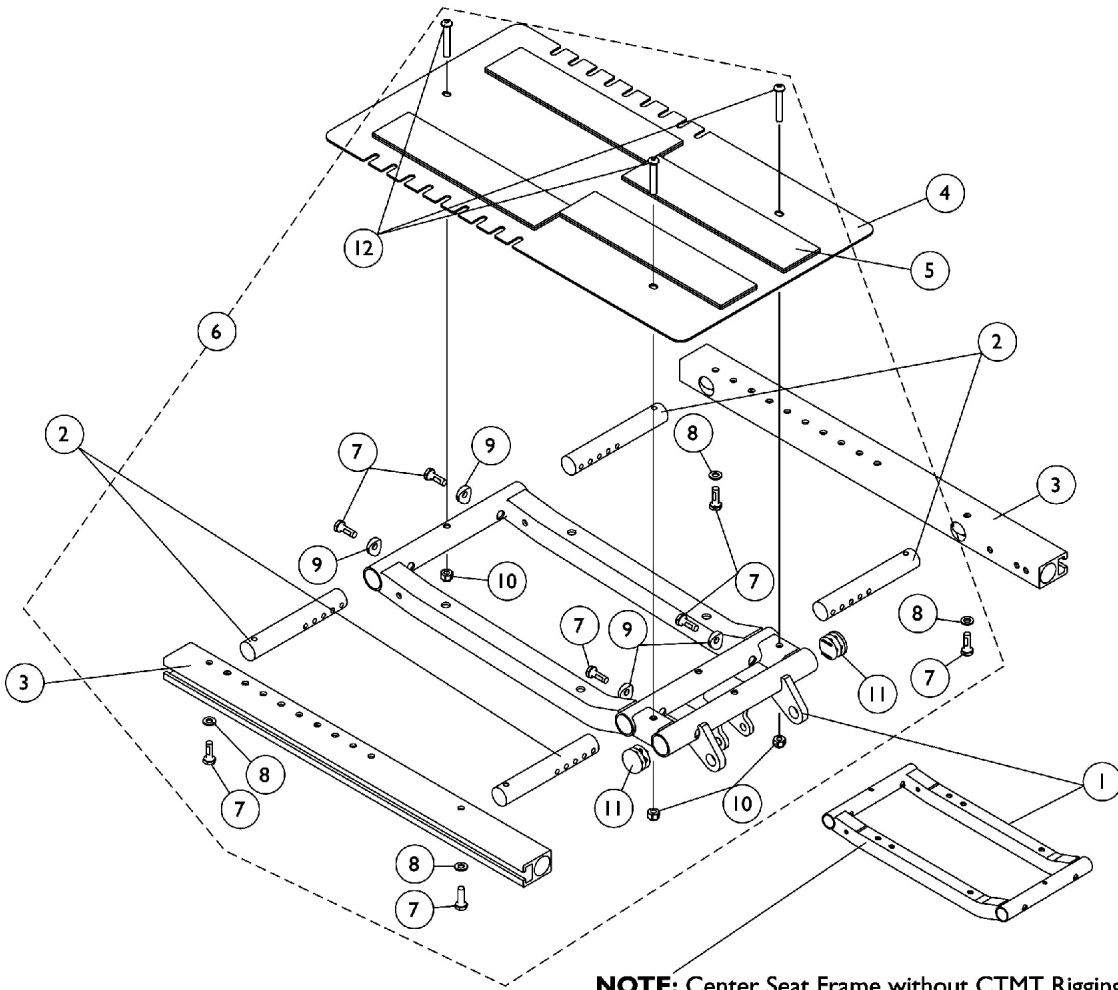
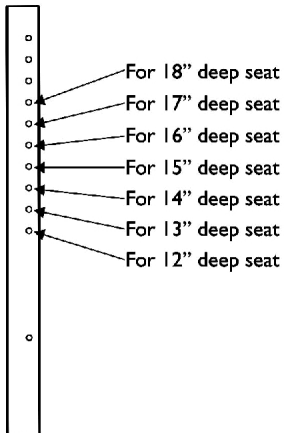


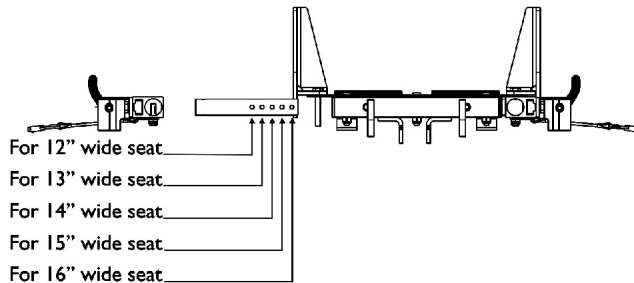
ADJASBA Seat Frame, Seat Pan and Hardware (12"-16" Wide) (After 7/4/05)



NOTE: Center Seat Frame without CTMT Rigging Brackets is used only when ELRPW Front Riggings are ordered for Mk6i electronics in order to attach the Dual Leg Integrated Actuator Module (DLIAM).



Seat Frame Depth Settings



Seat Frame Width Settings

ADJASBA Seat Frame, Seat Pan and Hardware (12"-16" Wide) (After 7/4/05)

Item Number	Note	Part Number	Description	Quantity Per	
				Package	Assembly
1		1121982-NLA	NLA - Frame, Center Seat, Black	1	1
1	C	1070475-NLA	NLA - Frame w/o CTMT Brackets, Center Seat, Black	1	1
2		1126126-NLA	NLA - Crossbar, Seat Frame (12 - 16" W)	1	4
3		1126127-NLA	NLA - Rail, Side (12 - 18" D)	1	2
4	A	1126144	Pan, Seat, with Hook and Loop Fasteners (12 - 16" W x 12 - 18" D)	1	1
5		1039949-NLA	NLA - Fastener, Hook Adhesive Back (2" W x 16" L)	1	4
5		1044578-NLA	NLA - Fastener, Loop Adhesive Back (2" W x 16" L)	1	4
6	B,D	1135500-NLA	NLA - Kit, Seat Frame Assembly Hardware 12"-16" Wide	1	1
7			Screw, Hex Head w/ Patch (1/4-20 x 3/4")	1	8
8			Washer (1/4 x 1/2 x 1/16")	1	4
9			Spacer, Coved (1/4 x 11/16 x 1/2")	1	4
10			Locknut (1/4-20)	1	3
11			Plug Button, Black (1")	1	2
12			Screw, Socket Button Head (1/4-20 x 1-1/2")	1	3
11		1134425	Package, Plug Button, Black (1")	10	1

NOTE: A - Includes item 5
B - Includes items 7-12
C - Center Seat Frame without CTMT Rigging Brackets is used only when ELRPW Front Riggings are ordered for Mk6i electronics in order to attach the Dual Leg Integrated Actuator Module (DLIAM).
D - item 11 Plug Buttons are not used and only a quantity of 2 for item #12 is required for the Center Seat Frame w/o CTMT Rigging Brackets