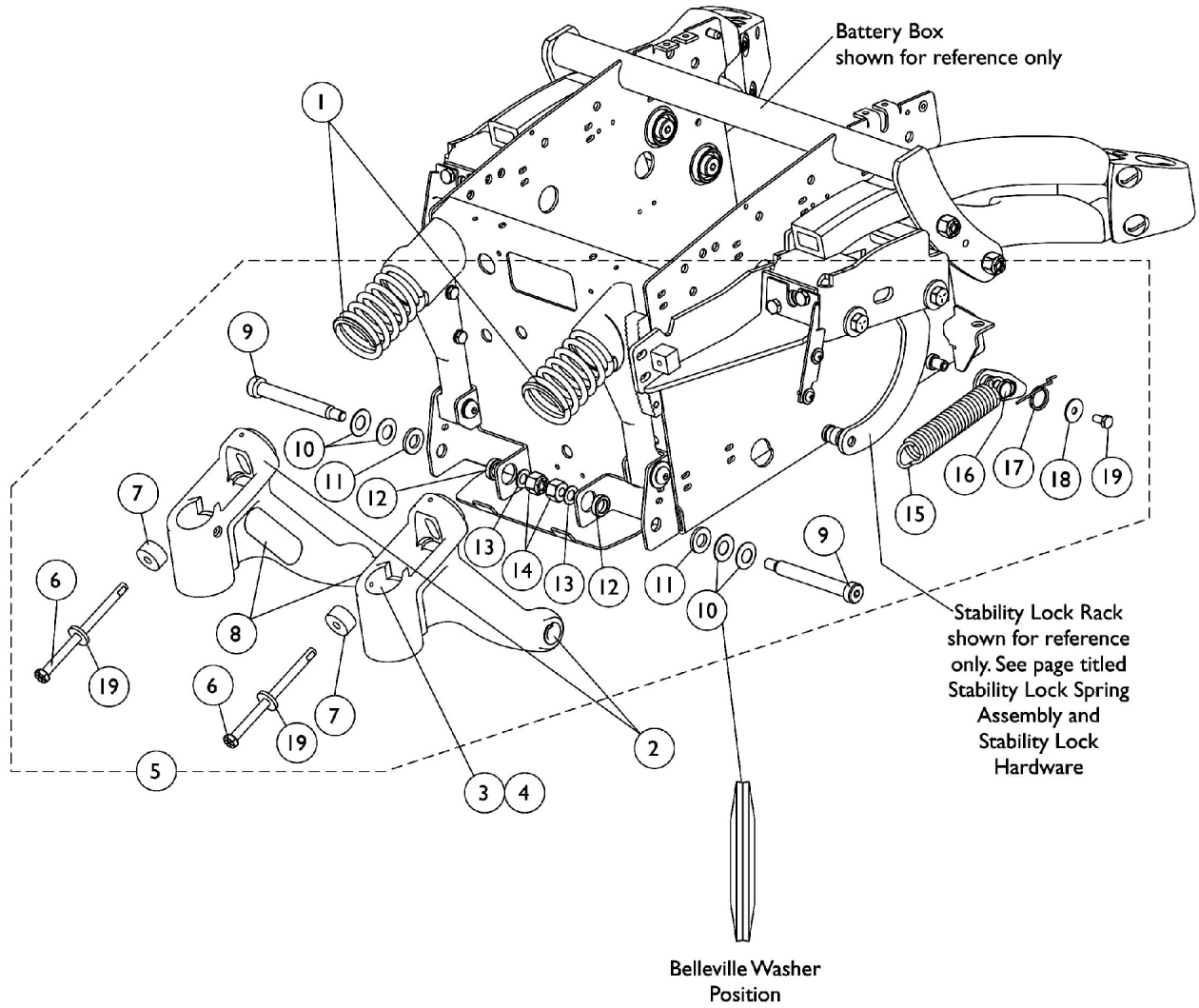


Rear Swing Arm Assembly (After 4/25/05) w/ TCD Assist Spring For 4-Pole Motors



Rear Swing Arm Assembly (After 4/25/05) w/ TCD Assist Spring For 4-Pole Motors

Item Number	Note	Part Number	Description	Quantity Per	
				Package	Assembly
1	A,H	1113186	Spring, Light Yellow, Non-Heavy Duty	1	2
1	B,I	1113187	Spring, Sunny Yellow, Heavy Duty	1	2
1	G,J	1125645-NLA	NLA - Spring, Dark Yellow, EXTRA Heavy Duty	1	2
2	C,E,F	8881113182-NL A	NLA - Kit, Swing Arm, Rear - Right	1	1
3			Bearing (5/8")	1	2
4			Ring, Tolerance	1	2
8			NLA - Plate, Name, Patent Numbers	1	1
2	C,E,F	8881113183-NL A	NLA - Kit, Swing Arm, Rear - Left	1	1
3			Bearing (5/8")	1	2
4			Ring, Tolerance	1	2
8			Decal, Transportation	1	1
5	D	1133686-NLA	NLA - Kit, Swing Arm/ TCD Mounting Hardware - For 4-Pole Motors	2	1
6			NLA - Screw, Hex Head w/ Patch (5/16-18 x 4-3/4")	1	2
7			NLA - Damper, Yellow Polyurethane	1	2
9			NLA - Screw, Socket Head Shoulder (1/2 x 3-3/4", 3/8-16)	1	2
10			Washer, Belleville (1/2 x 1 x 1/32")	1	4
11			NLA - Washer (1/2 x 15/16 x 1/8")	1	2
12			Spacer (1/2 x 3/4 x 7/32")	1	2
13			Washer, Flat (3/8 x 11/16 x 1/16")	1	2
14			Locknut (3/8-16)	1	2
15			Spring, Extension (1 x 4-1/2" L)	1	2
16			Plate, Pivot	1	2
17			Spring, Torsion - Right	1	1
17			Spring, Torsion - Left	1	1
18			Washer, Plain (1/4 x 7/8 x 1/16")	1	2
19			Screw, Hex Head w/ Patch (1/4-20 x 1/2")	1	2
20			Washer, Flat (21/64 x 53/64 x 7/64")	1	2

NOTE: A - Used for 300 Lb. weight limit and below without a vent tray option. Standard on TDX3 and TDX4.
B - Used for 301 Lb. and above weight limits without a vent tray. Upgrade on TDX3 and TDX4. Standard on TDX5.
C - Specify frame color when ordering, see page titled "Frame Finishes and Touch-Up Paints".
D - Includes items 6-7 and 9-20
E - Includes items 3-4 and 8
F - Patent number decal is adhered to the right swing arm and the transportation decal is adhered to the left swing arm.
G - Used for all weight limits with a vent tray option.
H - Spring color changed from Sunny Yellow to Light Yellow 3/22/10. It is recommended to order springs in pairs to match color and maintain equal spring tension on both sides of the wheelchair
I - Spring color remains the same for this part number. It is recommended to order springs in pairs to maintain equal spring tension on both sides of the wheelchair
J - Spring color changed from Sunny Yellow to Dark Yellow 3/22/10. It is recommended to order springs in pairs to match color and maintain equal spring tension on both sides of the wheelchair