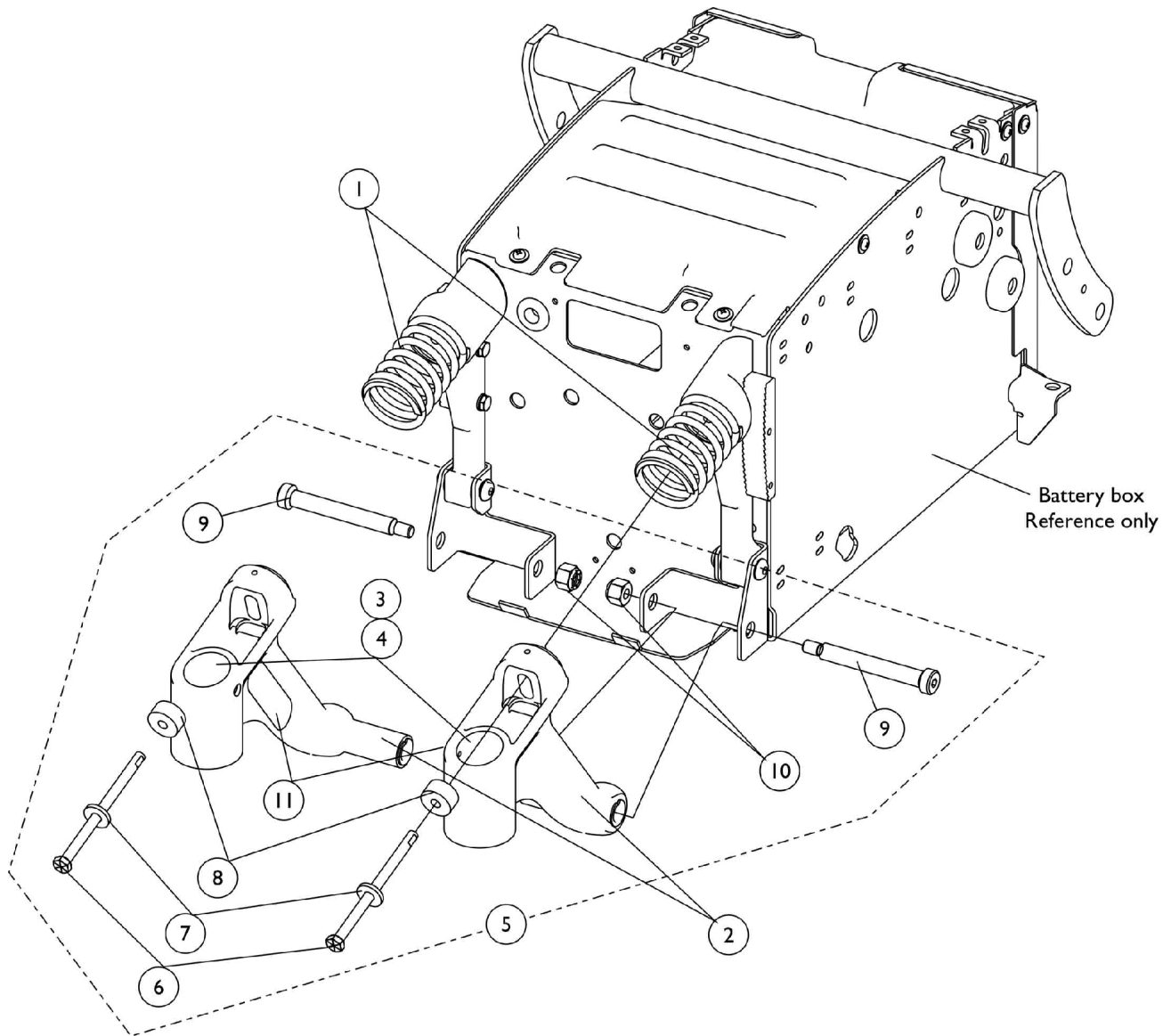


Rear Swing Arm Assembly (Before 4/26/05) For GB and 4-Pole Motors



Rear Swing Arm Assembly (Before 4/26/05) For GB and 4-Pole Motors

| Item Number | Note | Part Number | Description | Quantity Per | |
|-------------|--------|--------------------|--|--------------|----------|
| | | | | Package | Assembly |
| 1 | A,H | 1113186 | Spring, Light Yellow, Non-Heavy Duty | 1 | 2 |
| 1 | B,I | 1113187 | Spring, Sunny Yellow, Heavy Duty | 1 | 2 |
| 1 | G,G1,J | 1125645-NLA | NLA - Spring, Dark Yellow, EXTRA Heavy Duty | 1 | 2 |
| 2 | C,E,F | 8881113182-NL A | NLA - Kit, Swing Arm, Rear - Right | 1 | 1 |
| 3 | | | Bearing (5/8") | 1 | 2 |
| 4 | | | Ring, Tolerance | 1 | 2 |
| 11 | | | NLA - Plate, Name, Patent Numbers | 1 | 1 |
| 2 | C,E,F | 8881113183-NL A | NLA - Kit, Swing Arm, Rear - Left | 1 | 1 |
| 3 | | | Bearing (5/8") | 1 | 2 |
| 4 | | | Ring, Tolerance | 1 | 2 |
| 11 | | | Decal, Transportation | 1 | 1 |
| 5 | D | 1120350-NLA | NLA - Kit, Swing Arm Mounting Hardware | 2 | 1 |
| 6 | | | NLA - Screw, Hex Head w/ Patch (5/16-18 x 4-3/4") | 1 | 2 |
| 7 | | | Washer, Flat (21/64 x 53/64 x 7/64") | 1 | 2 |
| 8 | | | NLA - Damper, Yellow Polyurethane | 1 | 2 |
| 9 | | | NLA - Screw, Shoulder Hex Socket Head (1/2 x 3-1/2", 3/8-16) | 1 | 2 |
| 10 | | | Locknut (3/8-16) | 1 | 2 |

NOTE: A - Used for 300 Lb. weight limit and below without a vent tray option. Standard on TDX3 and TDX4. Standard on TDX5 before 10/20/03 and then the Heavy Duty Spring became Standard after 10/19/03.
B - Used for 301 Lb. and above weight limits without a vent tray. Upgrade on TDX3 and TDX4. Upgrade on TDX5 before 10/20/03 and then became Standard after 10/19/03.
C - Specify frame color when ordering, see page titled "Frame Finishes and Touch-Up Paints".
D - Includes items 6-10
E - Includes items 3, 4 and 11
F - Patent numbers decal is adhered to the right swing arm and the transportation label is adhered to the left swing arm
G - Used for all weight limits with a vent tray option. Before 7/15/04 2GTR systems w/ vent used the Heavy Duty Spring part # 1113187. It is recommended to replace with 2 ea. EXTRA Heavy Duty Springs for 2GTR systems ordered w/ a vent before 7/15/04
G1 - All Formula TRE Systems w/ vents introduced on 7/15/04 use the EXTRA Heavy Duty Springs.
H - Spring color changed from Sunny Yellow to Light Yellow 3/22/10. It is recommended to order springs in pairs to match color and maintain equal spring tension on both sides of the wheelchair
I - Spring color remains the same for this part number. It is recommended to order springs in pairs to maintain equal spring tension on both sides of the wheelchair
J - Spring color changed from Sunny Yellow to Dark Yellow 3/22/10. It is recommended to order springs in pairs to match color and maintain equal spring tension on both sides of the wheelchair