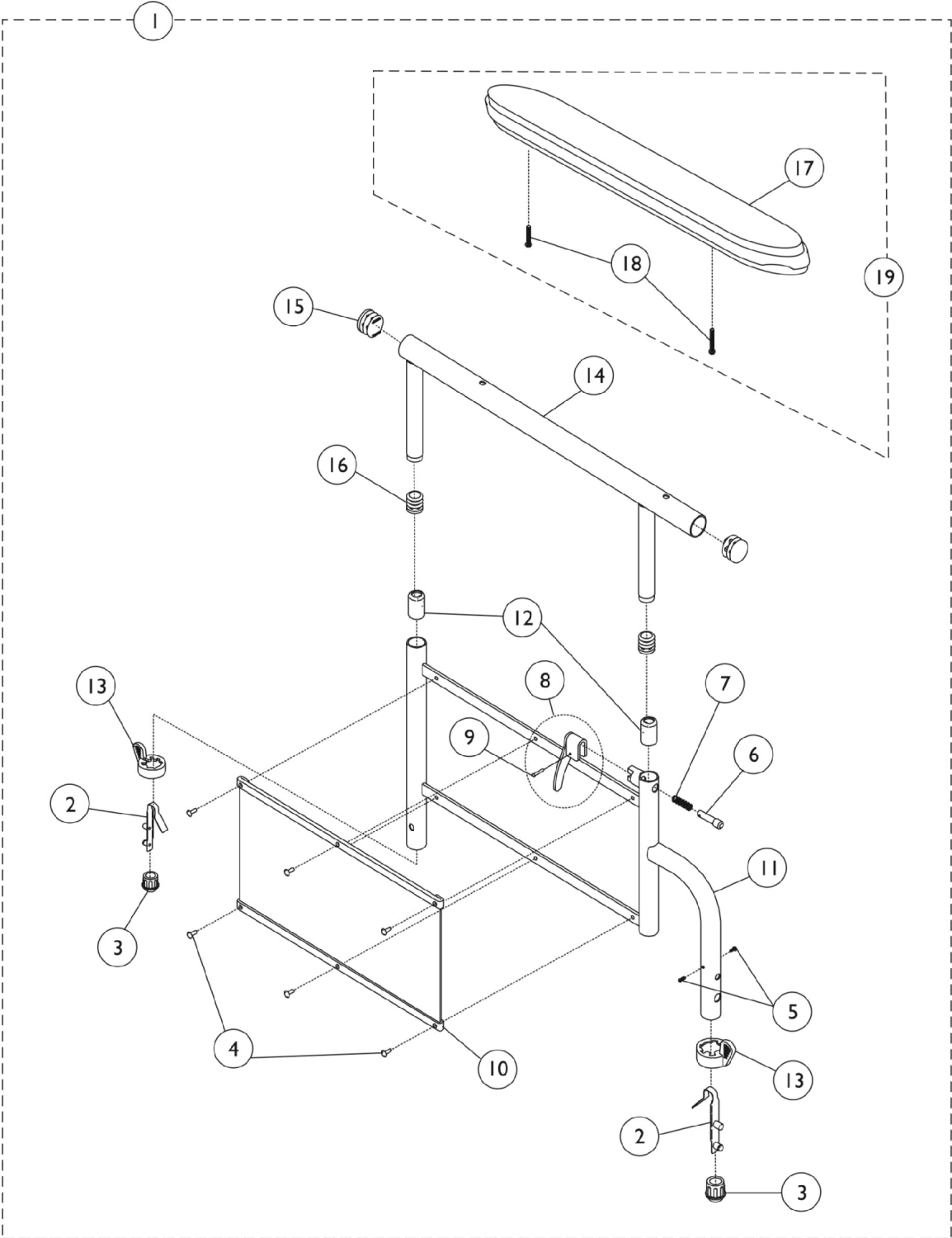


Conventional Adjustable Height Arms



Conventional Adjustable Height Arms

Item Number	Note	Part Number	Description	Quantity Per	
				Package	Assembly
1	A,E	8881130809	Kit, Armrest, Full Length, Black - Right (Style 19JY)	1	1
2			Spring, Torsion with Button Lock	1	2
3			Plug, Armrest, Black (3/4") (18GA)	1	2
4			Rivet	1	6
5			Screw, Phillips Pan Head Tap (#8-32 x 3/8")	1	2
6			Pin, Locking	1	1
7			Spring, Arm Lock	1	1
8			Handle, Lock, Black - Right	1	1
9			Rivet, Tubular	1	1
10			Guard, Clothing	1	1
11			Arm Assembly, Adjustable Height (2" Lower)	1	1
12			Anti-Rattle	1	2
13			Handle, Quad Release	1	2
14			Tube, Armrest, Full Length, Black (2" Lower)	1	1
15			Plug Button, Black (7/8")	1	2
16			Plug Button, Black (5/8")	1	2
17			NLA - Pad, Arm, Full Length w/ Law Label	1	1
18			Package, Screw Phillips Pan Head (#10-32 x 1-1/8")	1	1
1	A,E	8881130810	Kit, Armrest, Full Length, Black - Left (Style 19JY)	1	1
2			Spring, Torsion with Button Lock	1	2
3			Plug, Armrest, Black (3/4") (18GA)	1	2
4			Rivet	1	6
5			Screw, Phillips Pan Head Tap (#8-32 x 3/8")	1	2
6			Pin, Locking	1	1
7			Spring, Arm Lock	1	1
8			Handle, Lock, Black - Left	1	1
9			Rivet, Tubular	1	1
10			Guard, Clothing	1	1
11			Arm Assembly, Adjustable Height (2" Lower)	1	1
12			Anti-Rattle	1	2
13			Handle, Quad Release	1	2
14			Tube, Armrest, Full Length, Black (2" Lower)	1	1
15			Plug Button, Black (7/8")	1	2
16			Plug Button, Black (5/8")	1	2
17			NLA - Pad, Arm, Full Length w/ Law Label	1	1
18			Package, Screw Phillips Pan Head (#10-32 x 1-1/8")	1	1
1		8881130807	Kit, Armrest, Desk Length, Black - Right (Style 29JY)	1	1
2			Spring, Torsion with Button Lock	1	2
3			Plug, Armrest, Black (3/4") (18GA)	1	2
4			Rivet	1	6
5			Screw, Phillips Pan Head Tap (#8-32 x 3/8")	1	2
6			Pin, Locking	1	1
7			Spring, Arm Lock	1	1
8			Handle, Lock, Black - Right	1	1
9			Rivet, Tubular	1	1
10			Guard, Clothing	1	1

Conventional Adjustable Height Arms

Item Number	Note	Part Number	Description	Quantity Per	
				Package	Assembly
11			Arm Assembly, Adjustable Height (2" Lower)	1	1
12			Anti-Rattle	1	1
13			Handle, Quad Release	1	1
14			Tube, Armrest, Desk Length, Black (2" Lower)	1	1
15			Plug Button, Black (7/8")	1	2
16			Plug Button, Black (5/8")	1	2
17			NLA - Arm Pad, Desk Length w/ Law Label	1	1
18			Package, Screw Phillips Pan Head (#10-32 x 1-1/8")	1	2
1	A,E	8881130808	Kit, Armrest, Desk Length, Black - Left (Style 29JY)	1	1
2			Spring, Torsion with Button Lock	1	2
3			Plug, Armrest, Black (3/4") (18GA)	1	2
4			Rivet	1	6
5			Screw, Phillips Pan Head Tap (#8-32 x 3/8")	1	2
6			Pin, Locking	1	1
7			Spring, Arm Lock	1	1
8			Handle, Lock, Black - Left	1	1
9			Rivet, Tubular	1	1
10			Guard, Clothing	1	1
11			Arm Assembly, Adjustable Height (2" Lower)	1	1
12			Anti-Rattle	1	1
13			Handle, Quad Release	1	1
14			Tube, Armrest, Desk Length, Black (2" Lower)	1	1
15			Plug Button, Black (7/8")	1	2
16			Plug Button, Black (5/8")	1	2
18			Package, Screw Phillips Pan Head (#10-32 x 1-1/8")	1	2
17			NLA - Arm Pad, Desk Length w/ Law Label	1	1
19	B,E	8881127509	Kit, Arm Pad w/Screws - Full Length	1	1
17			NLA - Pad, Arm, Full Length w/ Law Label	1	1
18			Package, Screw Phillips Pan Head (#10-32 x 1-1/8")	1	2
19	B,E	8881127510	Kit, Arm Pad w/Screws - Desk Length	1	1
17			NLA - Arm Pad, Desk Length w/ Law Label	1	1
18			Package, Screw Phillips Pan Head (#10-32 x 1-1/8")	1	2
	C	1092472-NLA	NLA - Arm Tube Assembly w/ Plug Buttons, Full Length, Chrome - Right/Left	1	1
	C	1092469-NLA	NLA - Arm Tube Assembly w/ Plug Buttons, Desk Length, Chrome - Right/Left	1	1
	D	1092459-NLA	NLA - Arm Base Assembly w/o Arm Pad, Full/ Desk Length, Chrome - Right	1	1
	D	1092460-NLA	NLA - Arm Base Assembly w/o Arm Pad, Full/ Desk Length, Chrome - Left	1	1
	F	7100053	Arm Lock Assembly, Black - Right	1	1
			Handle, Lock, Black - Right	1	1
			Rivet, Tubular	1	1
			Pin, Locking	1	1
			Spring, Arm Lock	1	1
	F	7100054	Arm Lock Assembly, Black - Left	1	1
			Handle, Lock, Black - Left	1	1
			Rivet, Tubular	1	1

Conventional Adjustable Height Arms

Item Number	Note	Part Number	Description	Quantity Per	
				Package	Assembly
			Pin, Locking	1	1
			Spring, Arm Lock	1	1
NOTE: A - Includes items 2-16. B - Includes items 17 and 18. C - Not Shown. Includes items 14-16. D - Not Shown. Includes items 2-13. E - Specify color when ordering. See category titled, "Upholstery Colors, Frame Finishes and Packaging and Literature." F - Not shown. Includes items 6-9.					