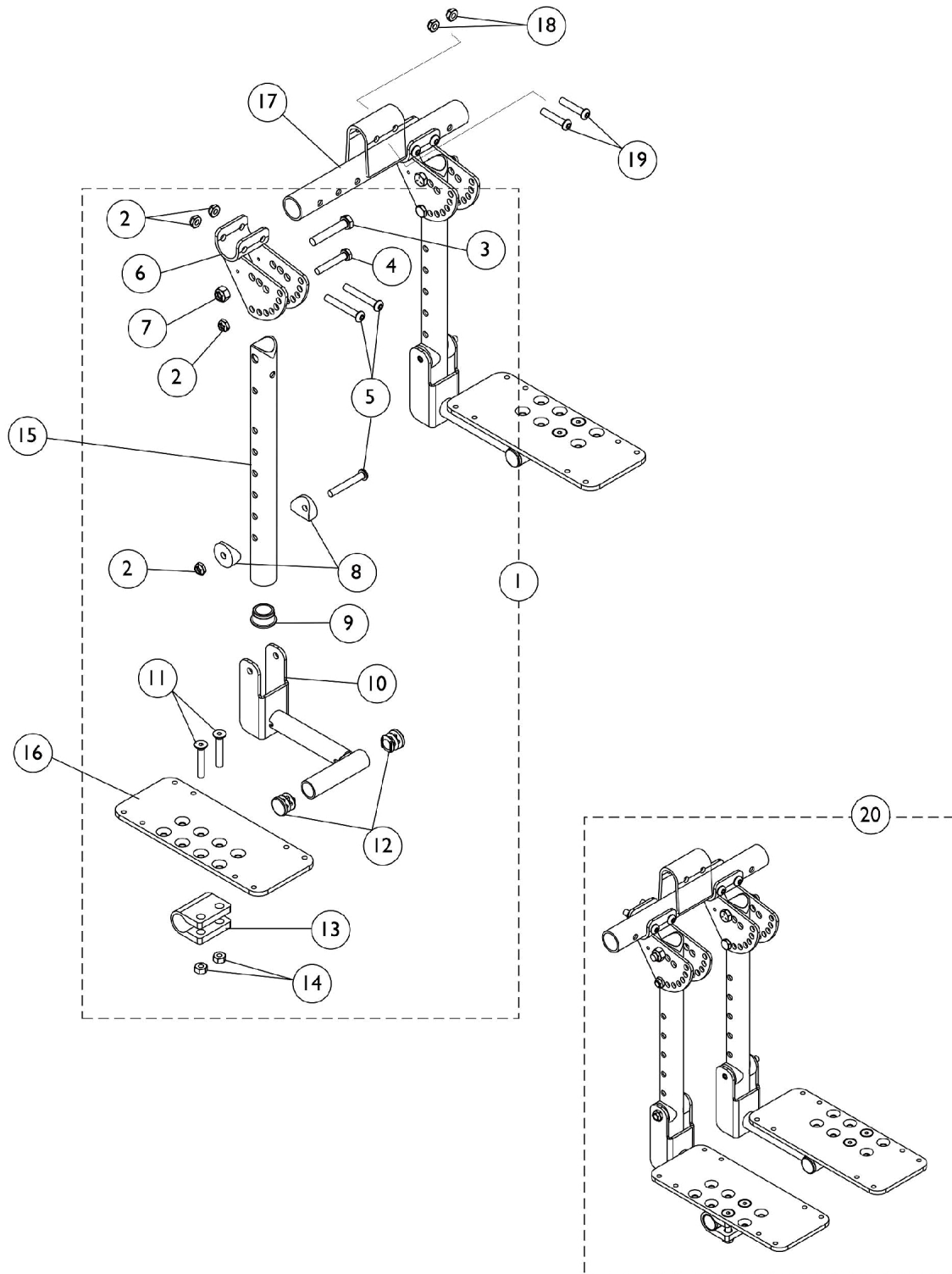


Bi-Lateral Contracture Footrest



Bi-Lateral Contracture Footrest

Item Number	Note	Part Number	Description	Quantity Per	
				Package	Assembly
1	A	1127693-NLA	NLA - Kit, Bi-Lateral Contracture Hardware	1	1
2			Locknut (1/4-20)	1	8
3			NLA - Screw, Hex Head (5/16-18 x 1-3/4")	1	2
4			Screw, Hex Head (1/4-20 x 1-1/2")	1	2
5			Screw, Socket Button Head (1/4-20 x 1-3/4")	1	6
6			NLA - Bracket, Angle Adjustment, Black	1	2
7			Locknut (5/16-18)	1	2
8			Spacer, Coved (1/4 x 1 x 9/16")	1	4
9			Plug Button, Black (1")	1	2
10			NLA - Bracket, Footplate Mounting, Black - Right	1	1
10			NLA - Bracket, Footplate Mounting, Black - Left	1	1
11			NLA - Screw, Socket Flat Head (1/4-28 x 1-1/2")	1	4
12			Plug Button, Black (3/4")	1	4
13			Clamp, Footplate	1	2
14			NLA - Nut, Hex (1/4-20)	1	4
15	B	1127236-NLA	NLA - Tube, Contracture Footrest - Short	1	2
15	C	1127237-NLA	NLA - Tube, Contracture Footrest - Long	1	2
16		See Chart	#16 Adjustable Angle Footplate	1	2
17		1127230-NLA	NLA - Hanger, Contracture Footrest	1	1
18		1025765	Locknut (1/4-28)	1	2
19		1083099	Screw, Socket Button Head (1/4-28 x 1-1/2")	1	2
20	D	See Chart	#20 Bi-Lateral Contracture Footrest Assembly - 14-1/2 - 16" Seat to Floor	1	1
20	D	See Chart	#20 Bi-Lateral Contracture Footrest Assembly - 16-1/2 - 19" Seat to Floor	1	1
	E,F	1095349-NLA	NLA - Instruction Sheet, Bi-Lateral Contracture Footrest	1	1

NOTE: A - Includes items 2-14. Contains enough hardware for right and left footrests.
 B - 14-1/2 - 16" Seat to Floor
 C - 16-1/2 - 19" Seat to Floor
 D - Includes items 1,15-17 & instruction sheet
 E - Not Shown
 F - Item is no longer available from the Invacare Service Parts Department. Refer to the Invacare Website under "Product Literature Search". Enter the part number in the "Keywords" field and download a free PDF version copy.

Bi-Lateral Contracture Footrest

#16 Adjustable Angle Footplate

3-1/4" Wide Footplate	4-1/4" Wide Footplate	5-1/4" Wide Footplate	6-1/4" Wide Footplate	7-1/4" Wide Footplate
1113571	1113572	1113573	1113574	1113575

#20 Bi-Lateral Contracture Footrest Assembly (1 Pair)

14-1/2" - 16" Seat to Floor

3-1/4" Wide Footplates	4-1/4" Wide Footplates	5-1/4" Wide Footplates	6-1/4" Wide Footplates	7-1/4" Wide Footplates
1127240	1127241-NLA	1127242-NLA	1127243-NLA	1127244-NLA
Includes items 1,15-17 & instruction sheet				

#20 Bi-Lateral Contracture Footrest Assembly (1 Pair)

16-1/2" - 19" Seat to Floor

3-1/4" Wide Footplates	4-1/4" Wide Footplates	5-1/4" Wide Footplates	6-1/4" Wide Footplates	7-1/4" Wide Footplates
1127245-NLA	1127246-NLA	1127247-NLA	1127248-NLA	1127249-NLA
Includes items 1,15-17 & instruction sheet				