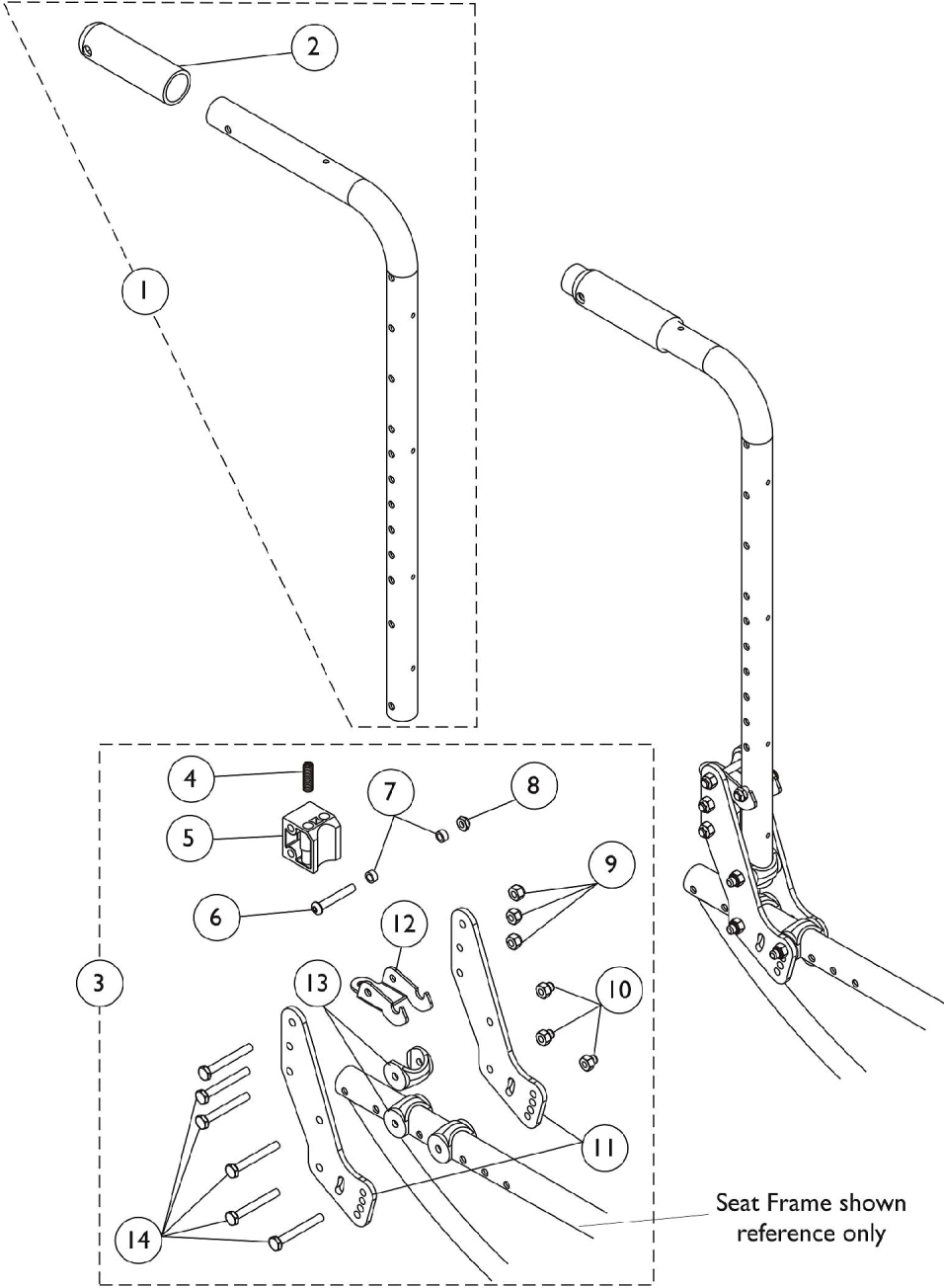


Fold Down Back Canes and Attaching Hardware



Fold Down Back Canes and Attaching Hardware

Item Number	Note	Part Number	Description	Quantity Per	
				Package	Assembly
1	A	1127685	Back Cane Assembly, Black - Right/Left (20" H)	1	2
1	A	1127686	Back Cane Assembly, Black - Right/Left (24" H)	1	2
2		1055398	Grip, Hand, Foam (4")	1	2
3	B	1127687-NLA	NLA - Kit, Back Cane Attaching Hardware	1	1
4			NLA - Spring, Compression (5/16 x 1-3/8 x 1/32")	1	1
5			NLA - Block, Stop	1	1
6			Screw, Socket Button Head (1/4-20 x 1-5/8")	1	1
7			NLA - Spacer (1/4 x 3/8 x 3/16")	1	2
8			Locknut (1/4-20)	1	1
9			Locknut (1/4-28)	1	3
10			Nut, Hex (1/4-28)	1	3
11			NLA - Plate, Back	1	2
12			NLA - Latch, Seat, Black	1	1
13			Uni-Washer, Coved	1	3
14			Screw, Hex Head (1/4-28 x 2")	1	6

NOTE: A - Includes back cane and item 2 (handgrip)
 B - Includes items 4-14