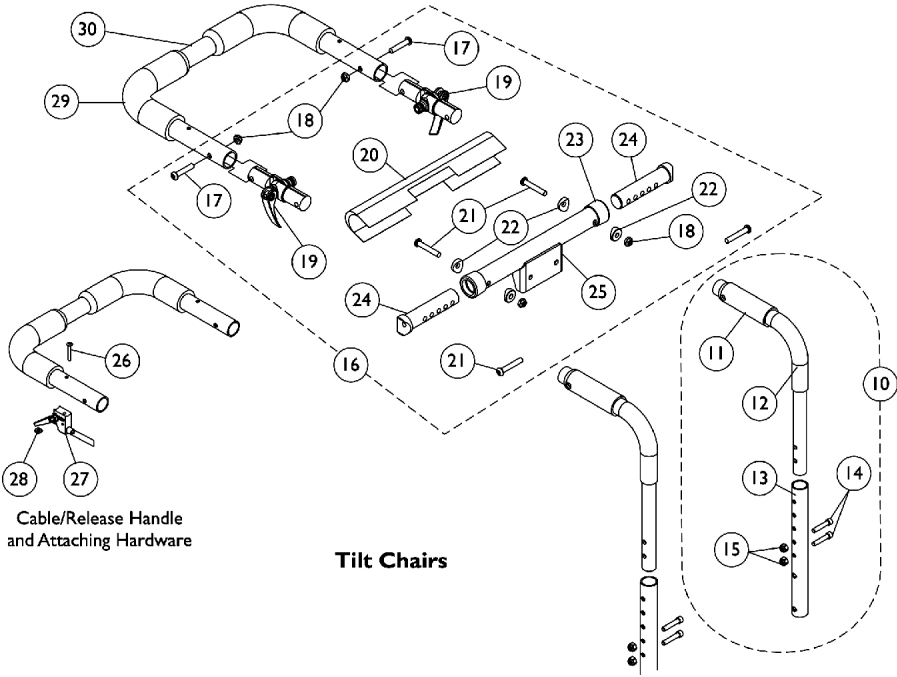
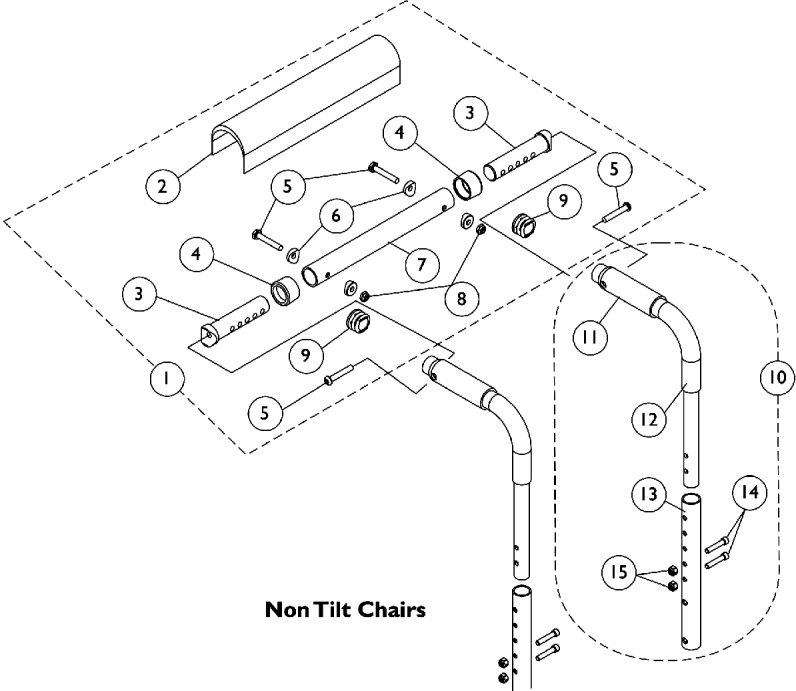


# Back Canes, Spreader Bar, and Push Handle

After 10/26/04



## Back Canes, Spreader Bar, and Push Handle

### After 10/26/04

Item Number	Note	Part Number	Description	Quantity Per	
				Package	Assembly
1	A,B	1126147	Kit, Spreader Bar Assembly (12"-16" Wide)	1	1
2			Cover, Spreader Bar (16-20" W)	1	1
3			NLA - Insert, Spreader Bar Connector, Black	1	2
4			Anti-Rattle (1")	1	2
5			Screw, Socket Button Head (1/4-20 x 1-1/2")	1	4
6			Spacer, Coved (1/4 x 11/16 x 1/2")	1	4
7			NLA - Tube, Spreader Bar, Black	1	1
8			Locknut (1/4-20)	1	2
9			Plug Button, Black (1")	1	2
10	C	1127154-NLA	NLA - Kit, Back Cane Assembly with Hardware (12"-15" Back Height)	1	1
11			Grip, Hand, Foam (4")	1	1
12			Handle, Push, Black	1	1
13			Cane, Back, Lower, Black - Right/Left (12-15" H)	1	1
14			Screw, Socket Head (1/4-20 x 1-1/4")	1	2
15			Locknut (1/4-20)	1	2
10	C	1127155-NLA	NLA - Kit, Back Cane Assembly with Hardware (16"-19" Back Height)	1	1
11			Grip, Hand, Foam (4")	1	1
12			Handle, Push, Black	1	1
13			Cane, Back, Lower, Black - Right/Left (16-19" H)	1	1
14			Screw, Socket Head (1/4-20 x 1-1/4")	1	2
15			Locknut (1/4-20)	1	2
10	C	1127156	Kit, Back Cane Assembly with Hardware (20"-22" Back Height)	1	1
11			Grip, Hand, Foam (4")	1	1
12			Handle, Push, Black	1	1
13			Cane, Back, Lower, Black - Right/Left (20-22" H)	1	1
14			Screw, Socket Head (1/4-20 x 1-1/4")	1	2
15			Locknut (1/4-20)	1	2
11		1135505	Package, Foam Hand Grip (4" L)	10	1
16	D	1126148-NLA	NLA - NLA - Kit, Spreader Bar with Headrest Bracket (12"-16" Adj. Width)	1	1
17			Screw, Socket Button Head (1/4-20 x 1-1/4")	1	2
18			Locknut (1/4-20)	1	4
19			Folding Hinge Assembly	1	2
20			Cover, Spreader Bar w/ Headrest Bracket	1	1
21			Screw, Socket Button Head (1/4-20 x 1-1/2")	1	4
22			Spacer, Coved (1/4 x 11/16 x 1/2")	1	4
23			Anti-Rattle (1")	1	2
24			NLA - Insert, Spreader Bar Connector, Black	1	2
25			NLA - Tube, Spreader Bar w/ Headrest Bracket, Black	1	1
26		1028513-NLA	NLA - Screw, Socket Head (#10-32 x 1-1/4")	1	1
27		1126103-NLA	NLA - Release Handle Assembly w/ Cable	1	1
28		1086207	Nut, Square (#10-32)	1	1
29		1133698	Grip, Foam Hand (9" L)	1	2

## Back Canes, Spreader Bar, and Push Handle After 10/26/04

Item Number	Note	Part Number	Description	Quantity Per	
				Package	Assembly
30		1082620-NLA	NLA - Handle, Push w/ Foam Grip, Black (12" W)	1	1
30		1082621-NLA	NLA - Handle, Push w/ Foam Grip, Black (13" W)	1	1
30		1082622-NLA	NLA - Handle, Push w/ Foam Grip, Black (14" W)	1	1
30		1082623	Handle, Push w/ Foam Grip, Black (15" W)	1	1
30		1082624	Handle, Push w/ Foam Grip, Black (16" W)	1	1
NOTE: A - Plug Buttons are not required when stroller handles are used. B - Includes items 2-9 C - Includes items 11-15 D - Includes items 17-25					