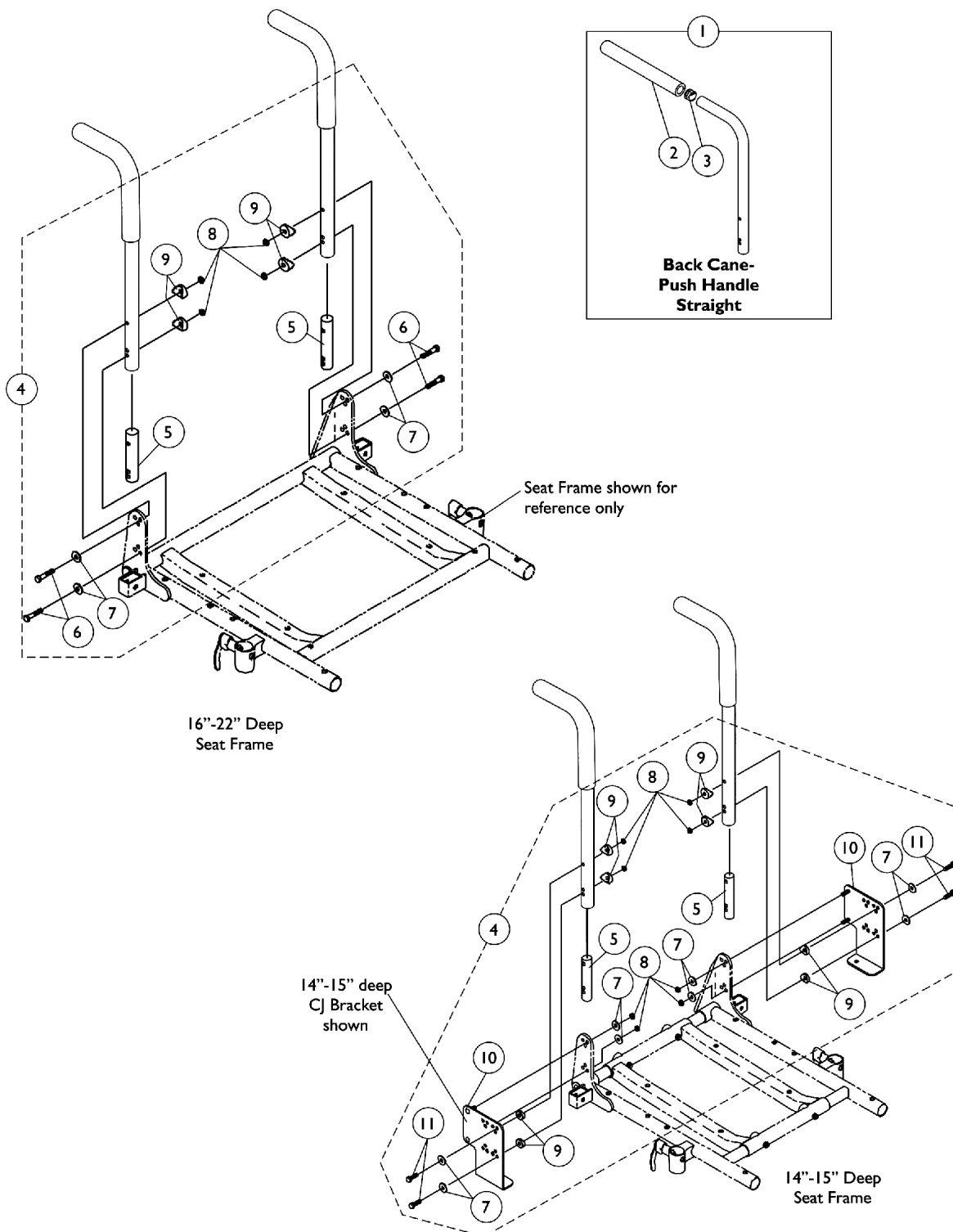


# Back Cane w/ Attaching Hardware



## Back Cane w/ Attaching Hardware

Item Number	Note	Part Number	Description	Quantity Per	
				Package	Assembly
1	A	See Chart	#1 Back Cane and Mounting Hardware	1	2
2		1135506	Package, Foam Hand Grip (9" L)	10	1
3		1130582	Package, Plug Button, Black (7/8")	10	1
4		1070500-NLA	Kit, Back Cane Attaching Hardware, For CJ Bracket 14-15" Deep Seat	2	1
5			Insert, Non-Threaded Back Cane (For Back Heights 20" and Lower)	1	2
7			Washer (1/4 x 23/32 x 1/16")	1	8
8			Locknut (1/4-20)	1	8
9			Spacer, Coved (1/4 x 11/16 x 1/2")	1	8
10			NLA - Bracket, Back Mounting, Black - Right	1	1
10			NLA - Bracket, Back Mounting, Black - Left	1	1
11			Screw, Hex Head (1/4-20 x 1-5/8")	1	4
4	B,C,E	1106554-NLA	NLA - Kit, Back Cane Attaching Hardware	2	1
5			Insert, Non-Threaded Back Cane (For Back Heights 20" and Lower)	1	2
6			Screw, Hex Head (1/4-20 x 1-5/8")	1	4
7			Washer (1/4 x 23/32 x 1/16")	1	4
8			Locknut (1/4-20)	1	4
9			Spacer, Coved (1/4 x 11/16 x 1/2")	1	4
4		1106555-NLA	NLA - Kit, Back Cane Attaching Hardware	2	1
5			NLA - Insert, Non-Threaded Back Cane (For Back Heights 21" and Higher)	1	2
6			Screw, Hex Head (1/4-20 x 1-5/8")	1	4
7	B,D		Washer (1/4 x 23/32 x 1/16")	1	4
8			Locknut (1/4-20)	1	4
9			Spacer, Coved (1/4 x 11/16 x 1/2")	1	4

NOTE: A - Includes items 5-11  
B - Includes items 5-9  
C - Used for 12"-20" high back canes  
D - Used for 21"-24" high back canes  
E - Prior to 7/9/04 new back cane attaching hardware must be ordered for 14-15" deep seats that use CJ brackets. The threaded insert was replaced with a non-threaded insert for 12-20" high back canes

# Back Cane w/ Attaching Hardware

## #1 Back Cane Assemblies

Back Height	Part Number
12"	1045253-NLA
13"	1045254-NLA
14"	1045255-NLA
15"	1045256-NLA
16"	1048558
17"	1048559
18"	1048560
19"	1048561
20"-24"	1048562
NOTE: Back Cane Assemblies include Foam Grips and Plug Buttons where shown	