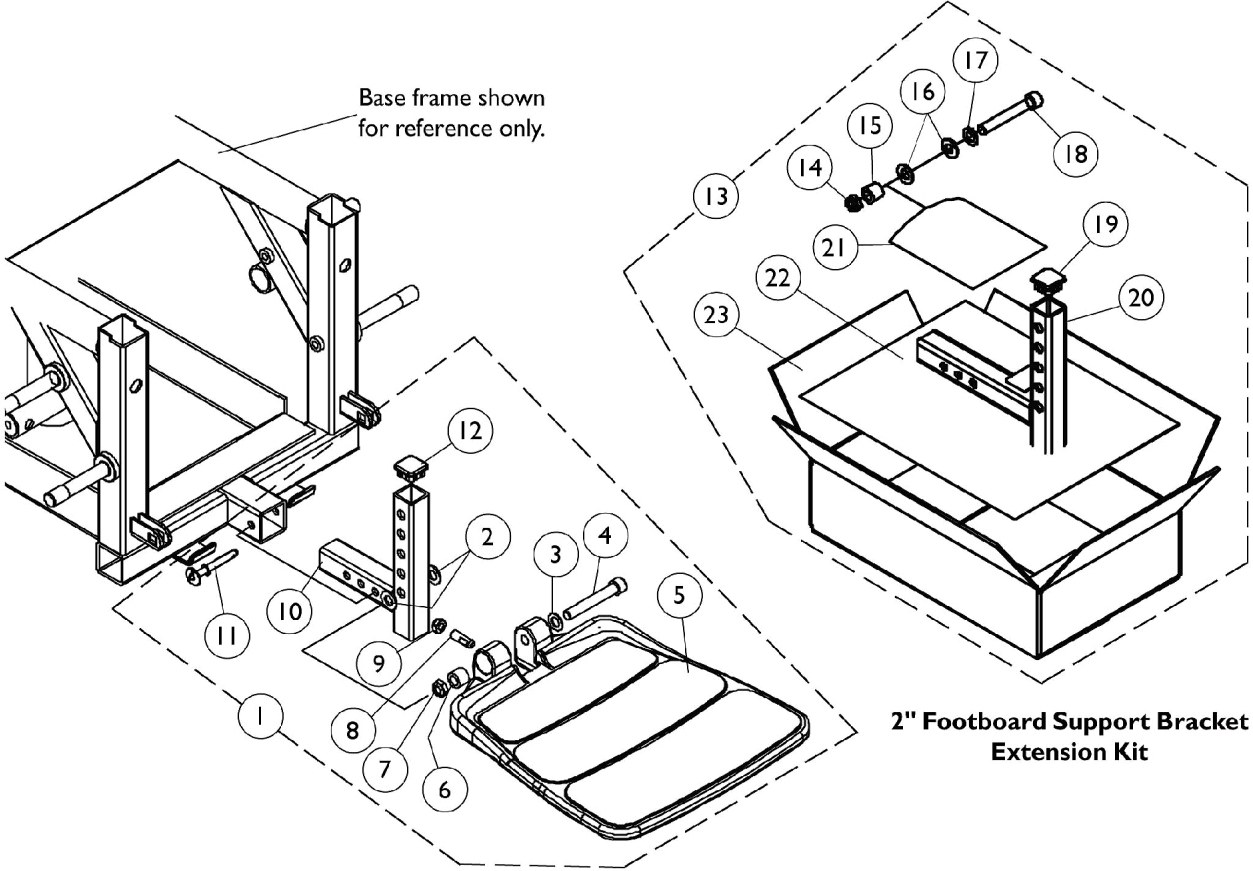


Footboard Assembly - 90FB



Footboard Assembly - 90FB

| Item Number | Note | Part Number | Description | Quantity Per | |
|-------------|-------|-------------|--|--------------|----------|
| | | | | Package | Assembly |
| 1 | A,B,E | 1105027-NLA | NLA - Footboard Assembly | 1 | 1 |
| 2 | | | Washer, Nylon (3/8 x 3/4 x 1/16") | 1 | 2 |
| 3 | | | Washer, Flat (3/8 x 11/16 x 1/16") | 1 | 1 |
| 4 | | | Screw, Socket Head (3/8-16 x 2-1/2") | 1 | 1 |
| 5 | | | NLA - Footboard with Cover | 1 | 1 |
| 6 | | | Bushing (3/8 x 5/8 x 1/2") | 1 | 1 |
| 7 | | | Locknut, Low Profile (3/8-16) | 1 | 1 |
| 8 | | | Screw, Set Socket Flat Point (5/16-18 x 1") | 1 | 1 |
| 9 | | | Locknut (5/16-18) | 1 | 1 |
| 10 | | | Bracket, Footboard Support, Black | 1 | 1 |
| 11 | | | Pin, Quick Release | 1 | 1 |
| 12 | | | Plug Button, Black (1" Square) | 1 | 1 |
| 13 | C,D | 1115378 | Kit, 2" Footboard Extension | 1 | 1 |
| 14 | | | Locknut, Low Profile (3/8-16) | 1 | 1 |
| 15 | | | Bushing (3/8 x 5/8 x 1/2") | 1 | 1 |
| 16 | | | Washer, Nylon (3/8 x 3/4 x 1/16") | 1 | 2 |
| 17 | | | Washer, Flat (3/8 x 11/16 x 1/16") | 1 | 1 |
| 18 | | | Screw, Socket Head (3/8-16 x 2-1/2") | 1 | 1 |
| 19 | | | Plug Button, Black (1" Square) | 1 | 1 |
| 20 | | | Bracket, Footboard Support, Black (2" Extension) | 1 | 1 |
| 21 | | | NLA - Bag, Zip-Lip (4" L x 4" W) | 1 | 1 |
| 22 | | | NLA - Instruction Sheet, 2" Footboard Extension | 1 | 1 |
| 23 | | | Carton, Shipper | 1 | 1 |

NOTE: A - Includes items 2-12
 B - When ordering a footboard assembly for the first time that requires a 2" extension kit, items 5, 8, 9, 11 and 13 must be ordered
 C - Includes items 14-23
 D - Part number 1114833 is no longer available from the Invacare Service Parts Department. Refer to the Invacare Website under "Product Literature Search". Enter the part number in the "Keywords" field and download a free PDF version copy.
 E - Part #1105027 is No Longer Available and a replacement is currently not available.