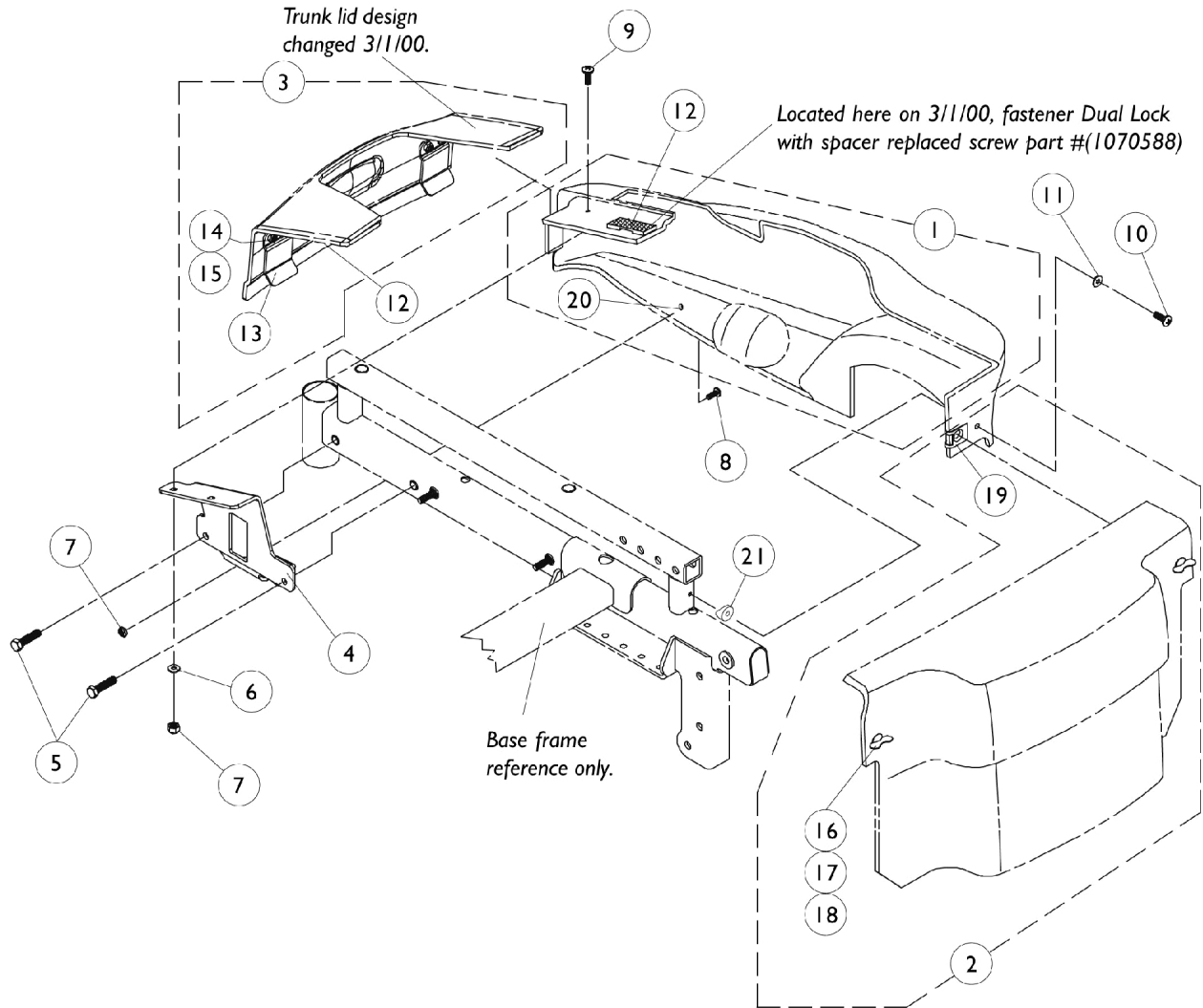


# Shroud Covers

## Weight Shifting Tilt

After 2/29/00



# Shroud Covers

## Weight Shifting Tilt

### After 2/29/00

#### Item #'s 1-3 Shroud Covers After 2/29/00 Weight Shifting Tilt

Item Number	Description	Ocean Blue	Emerald Green	Liquid Black	Candy Apple Red
1	Side Panel - Right	1102286-NLA See Note(s) B, C, A	1102287-NLA See Note(s) A, C, B	1102285-NLA See Note(s) B, C, A	1102284-NLA See Note(s) A, B, C
1	Side Panel - Left	1102290-NLA See Note(s) C, B, A	1102291-NLA See Note(s) A, B, C	1102289-NLA See Note(s) B, C, A	1102288-NLA See Note(s) A, C, B
2	Battery Cover	1094777-NLA	1094778-NLA	1094776-NLA	1094775-NLA
3	Trunk Lid	1102282-NLA See Note(s) B	1102283-NLA See Note(s) B	1102281-NLA See Note(s) B	1102280-NLA See Note(s) B
NOTE: A - Decals not included. See page titled, "Packaging, Literature and Decals." B - Dual lock fasteners and spacers are not included with shrouds. See item 12. C - Side Panel includes Rubber Bushing.					

#### Color Conversion Package

Ocean Blue	Emerald Green	Liquid Black	Candy Apple Red
1096891-NLA	1096892-NLA	1096890-NLA	1096889-NLA
See Note(s) C, A, B	See Note(s) C, A, B	See Note(s) C, B, A	See Note(s) B, A, C
NOTE: A - Includes items: 1, 3, 6, 7, 8, 9, 10 and 11. See category titled, "Shroud Covers After 2/29/00 Weight Shifting Tilt." B - Decals not included. See category titled, "Packaging, Literature and Decals." C - Not Shown.			

# Shroud Covers

## Weight Shifting Tilt

### After 2/29/00

Item Number	Note	Part Number	Description	Quantity Per	
				Package	Assembly
1-3		See Chart	Item #'s 1-3 Shroud Covers After 2/29/00 Weight Shifting Tilt	1	1
4		1079197-NLA	NLA - Bracket, Side Shroud, Black - Right	1	1
4		1079198-NLA	NLA - Bracket, Side Shroud, Black - Left	1	1
5		1045267	Screw, Hex Head w/ Patch (1/4-20 x 3/4")	1	4
6		1028516	Washer, Steel (3/16 x 7/16 x 1/16")	1	2
7		7930332-NLA	NLA - Locknut, High Profile (#10-32)	25	1
8		1070575-NLA	NLA - Screw, SEMS w/ Washer (#10-32 x 7/8")	1	2
9		1070588-NLA	NLA - Screw, Phillips Truss Head (#10-32 x 1/2")	1	2
10		1028755	Screw, Phillips Pan Head (#10-32 x 5/8")	1	2
11		1070587	Washer, Flat (3/16 x 5/8 x 1/16")	1	2
12	A	1097290	Kit, Dual Lock Fastener/ Spacer	1	1
	B,C	1079196-NLA	NLA - Hardware, Side Panel Attaching	1	1
13		1070577-NLA	NLA - Plate, Trunk Clip	1	2
14		1070588-NLA	NLA - Screw, Phillips Truss Head (#10-32 x 1/2")	1	4
15		7930332-NLA	NLA - Locknut, High Profile (#10-32)	25	1
16		1070583-NLA	NLA - Stud, Wing Head (3/4" Long)	1	2
17		1070581-NLA	NLA - Washer, Nylon Cupped (9/32 x 19/32 x 3/32")	1	4
18		1070580-NLA	NLA - Washer, Nylon Retainer (1/4 x 1/2 x 1/32")	1	4
19		1013497-NLA	NLA - Fastener, Turn, Clip-On (1/4")	1	4
20		1070594-NLA	NLA - Bushing, Rubber	1	2
21		40157X019-NLA	NLA - Spacer, Coved (1/4 x 7/8 x 7/16")	1	2
	B	1102292-NLA	NLA - Instruction Sheet, Dual Lock Fastener/ Spacer Kit	1	1
	B	See Chart	Color Conversion Package	1	1

NOTE: A - Kit includes 2 each dual lock fasteners (5/8" W x 2" L) and (1" W x 2" L), 4 each dual lock spacers and instruction sheet.  
B - Not Shown.  
C - Includes items 4-11 and 21.