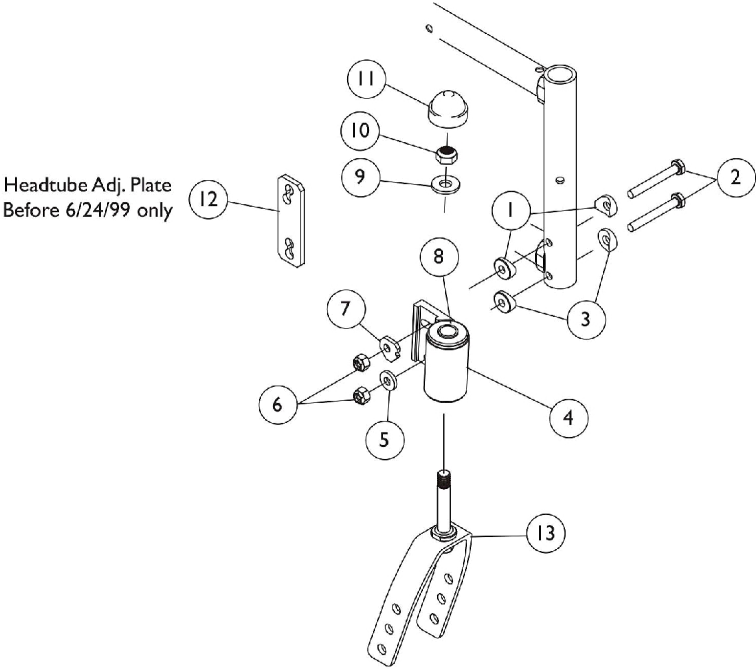
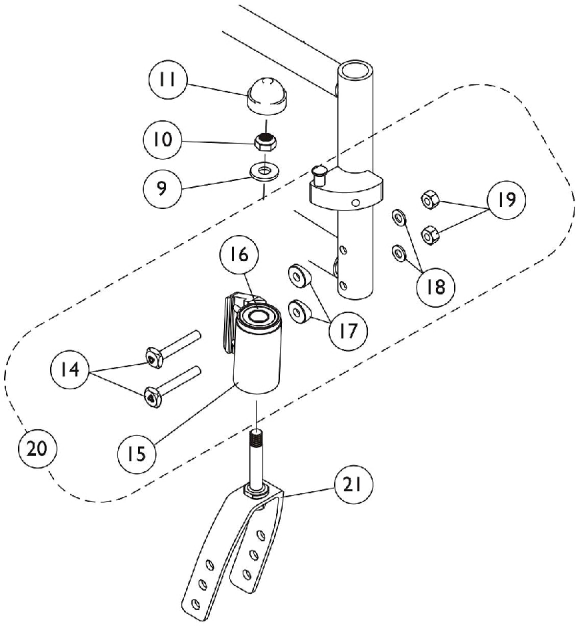


Caster Forks & Headtube Hardware



Chairs built Before 6/11/04



Chairs built After 6/10/04

Caster Forks & Headtube Hardware

Item Number	Note	Part Number	Description	Quantity Per	
				Package	Assembly
1		1026099	Spacer, Coved (1/4 x 11/16 x 1/2")	1	4
2		1055349	Screw, Hex Head (1/4-28 x 2")	1	4
3		1009861	Spacer, Coved (1/4 x 11/16 x 1/2")	1	4
4		1094459	Headtube, Caster with Precision Bearings, Black - Right	1	1
4	A	1094460-NLA	NLA - Headtube, Caster with Precision Bearings, Black - Left	1	1
5		1018739	Washer (1/4 x 5/8 x 3/32")	1	2
6		1065362	Locknut (1/4-28)	1	4
7		1040355	Cam, Headtube Adjustment	1	2
8	B	1001801	Bearing, Flange (1/2")	1	4
8	C,H	40117X021	Bearing (1/2" I.D. x 1-1/8" O.D.)	1	4
9		1021508	Washer, Nylon (5/8 x 1 x 3/32")	1	2
10		1025737	Locknut (1/2-20)	1	2
11	B	1038353	Plug Button, Headtube, Black	1	2
11	C	1001843	Cap, Head Tube, Black	1	2
11	C	1131189	Package, Head Tube Cap	10	2
12	B,D	1039303-NLA	NLA - Plate, Headtube Adjustment	1	2
13	B	1065628	Kit, Fork w/ Hardware (6 and 6 x 1" Casters)	1	1
13	C	1037420	Fork and Stem Assembly, Black (6 x 1" Caster)	1	1
13	B	1065629	Kit, Fork w/ Hardware (6 x 2" and 8" Casters)	1	1
13	C	1056640	Fork and Stem Assembly, Black (8" & 6 x 2" Caster)	1	1
14		1113501	Screw, Eccentric (1/4-28 x 1-11/16")	1	4
15	F	1124857-NLA	NLA - Caster Headtube Assembly, Black - Right	1	1
15	G	1124858	Caster Headtube Assembly, Black - Left	1	1
16	H	40117X021	Bearing (1/2" I.D. x 1-1/8" O.D.)	1	4
17		1009861	Spacer, Coved (1/4 x 11/16 x 1/2")	1	4
18		1026907	Washer (1/4 x 1/2 x 1/16")	1	4
19		1055366	Locknut (1/4-28)	1	4
20	E	1126031-NLA	NLA - Head Tubes, Caster with Hardware (Pair)	2	1
21		1037420	Fork and Stem Assembly, Black (6 x 1" Caster)	1	1
21		1056640	Fork and Stem Assembly, Black (8" & 6 x 2" Caster)	1	1

NOTE: A - Due to product improvement, headtube (1094460) are NLA. For chairs built Before 6/11/04, order item 20 (1126031) caster headtubes w/ hardware.

B - Chairs built Before 6/24/99. This headtube cap is flat.

C - Chairs built After 6/23/99. This headtube cap is domed (shown in image).

D - Headtube Adjustment Plate was replaced by items 5 and 7

E - Includes items 14-19 (hardware for both frames)

F - Part # 1124857 is used for the right side in a trailing position and left side in a leading position

G - Part # 1124858 is used for the left side in a trailing position and right side in a leading position

H - Bearing is used for the HPBP (Precision Head Tube Bearing), Item 4.