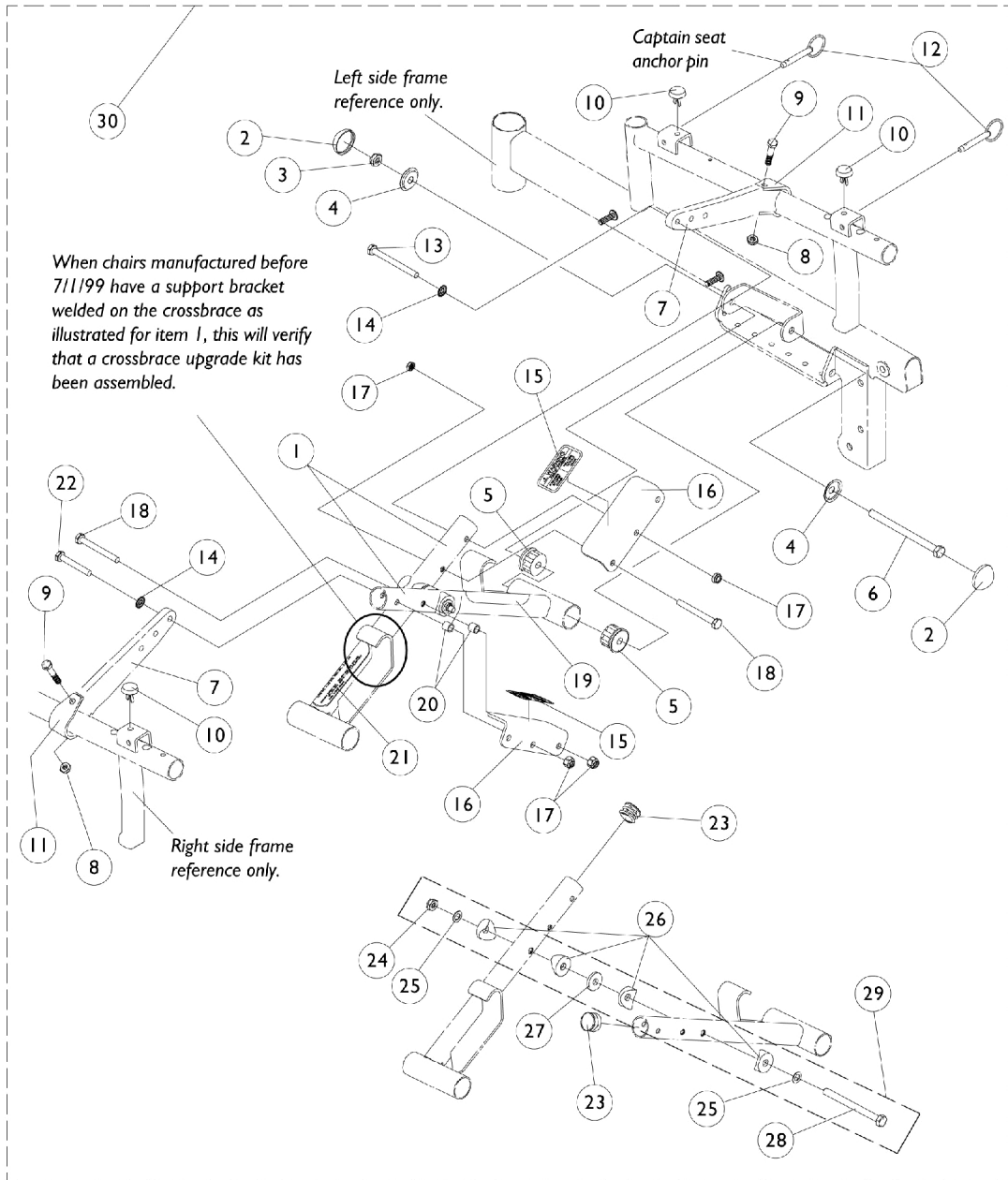


Crossbraces and Hardware - After 6/30/99 Captain Seat



Crossbraces and Hardware - After 6/30/99 Captain Seat

Item Number	Note	Part Number	Description	Quantity Per	
				Package	Assembly
1	B	1086578-NLA	NLA - Crossbrace w/Support Bracket (18" W)	1	2
2		1028835-NLA	NLA - Cap, Hub, Black	1	4
3		7930363-NLA	NLA - Package, Locknut (5/16"-24)	25	1
4		1028491-NLA	NLA - Washer, Caplugs (11/32" I.D. x 1" O.D.)	1	4
5		1056708-NLA	NLA - Plug, Pivot Tube	1	4
6		1038179-NLA	NLA - Screw, Hex Head (5/16-24 x 4-1/4")	1	2
2-6	C,D,H	1057830-NLA	NLA - Hardware, Crossbrace Pivot Tube	2	1
7		1057382-NLA	NLA - Link, Pivot, Hemi, Black (16 - 18" W)	1	2
8		7930323-NLA	NLA - Package, Locknut (1/4-20)	25	1
9		1030949	Screw, Hex Head (1/4-20 x 1-1/2")	1	2
10		1071604-NLA	NLA - Bumper, Nylon	1	4
11		1057828-NLA	NLA - Strap, Pivot Link	1	2
12		1071602-NLA	NLA - Pin, Anchor (Captain Seat)	1	4
13		1024796-NLA	NLA - Screw, Hex Head (1/4-20 x 2")	1	1
14		1026900	Washer (1/4 x 23/32 x 1/16")	1	2
15		1074142-NLA	NLA - Decal, Crossbrace	1	2
16	B	1086800-NLA	NLA - Bracket, Push, Black	1	2
17		7930333	Locknut (1/4-20)	25	1
18		1024793-NLA	NLA - Screw, Hex Head (1/4-20 x 1-3/4")	1	2
19		1035900	Decal, Transportation	1	1
20		1031884-NLA	NLA - Bushing, Black or Color Chairs (9/32 x 3/8 x 11/32")	1	2
21		1119281-NLA	NLA - Plate, Name, Patent Numbers	1	1
22		1026154-NLA	NLA - Screw, Hex Head (1/4-20 x 2-1/4")	1	1
23		1029501	Plug Button, Black (1")	1	2
24		7930330-NLA	NLA - Locknut (5/16-24)	25	1
25		1025704	Washer, Flat (5/16 x 5/8 x 1/16")	1	2
26		1016263	Spacer, Coved (3/4 x 1 x 1/2")	1	4
27		7930313	Package, Washer, Nylon (5/16 x 7/8 x 1/8")	25	1
28		1025705-NLA	NLA - Screw, Hex Head (5/16-24 x 3-1/4")	1	1
29	G	1086180-NLA	NLA - Hardware, Crossbrace Center Bolt Attaching	1	1
30	E	1086794-NLA	NLA - Hardware, Crossbrace	1	1
	A,D,F	1086801-NLA	NLA - Kit, Crossbrace Upgrade	1	1
	D	1088895-NLA	NLA - Instruction Sheet, Crossbrace Upgrade Kit	1	1

NOTE: A - When chairs manufactured before 7/1/99 have a support bracket welded on the crossbrace as illustrated for item 1, this will verify that a crossbrace upgrade kit has been assembled.
 B - Decals not included. See page titled, "Packaging, Literature and Decals."
 C - Includes items 2 through 6.
 D - Not Shown.
 E - Less items 1 and 7. Includes items 2-6 and 8-28.
 F - Includes items 1, 7, 30 and instruction sheet.
 G - Includes items 24-28.
 H - Pair