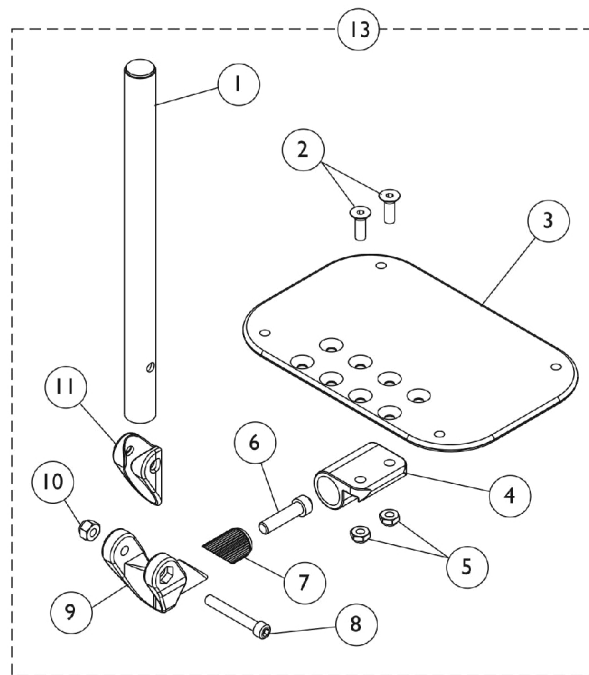
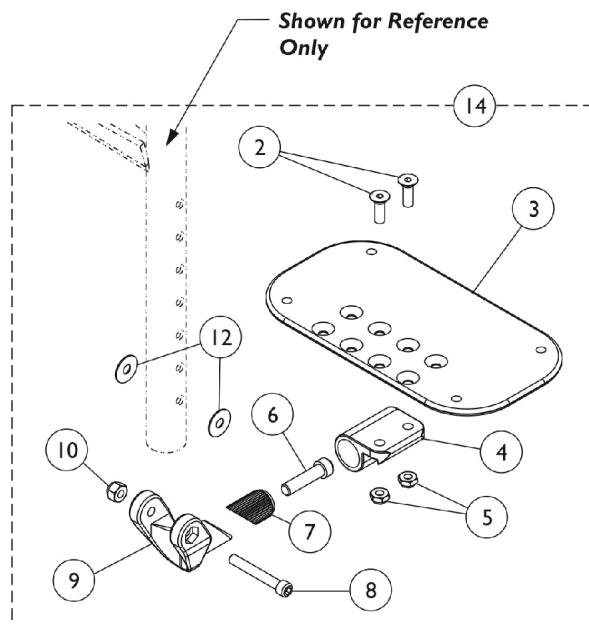


# Adjustable Angle Footplates with or without Pivot Tube - AT5543 (Chairs Built After 5/31/03)



**Swingaway Front Riggings  
Except 90 Degree and 70 Degree MFX**



**90 Degree and 70 Degree MFX**

# Adjustable Angle Footplates with or without Pivot Tube - AT5543 (Chairs Built After 5/31/03)

Item Number	Note	Part Number	Description	Quantity Per	
				Package	Assembly
1	A	1114699	Tube, Pivot/Slide, Straight, Black (10-1/4")	1	1
1	B	1114707	Tube, Pivot/Slide, Straight, Chrome (11-7/8")	1	1
1	C	1114700	Tube, Pivot/Slide, Straight, 2" Longer ALPT, Black (12-1/4")	1	1
2		1113578	Screw, Socket Flat Head (1/4-28 x 3/4")	1	2
3	F,G	1113571	Footplate, Adjustable Angle, Small, Black (3-1/4" W x 8" L)	1	1
3	F,G	1113572	Footplate, Adjustable Angle, Medium, Black (4-1/4" W x 8" L)	1	1
3	F,G	1113573	Footplate, Adjustable Angle, Large, Black (5-1/4" W x 8" L)	1	1
3	F,G	1113574	Footplate, Adjustable Angle, Extra Large, Black (6-1/4" W x 8" L)	1	1
3	F,G	1113575	Footplate, Adjustable Angle, XX- Large, Black (7-1/4" W x 8" L)	1	1
4		1113528	Bracket, Adjustable Angle Footplate, Black	1	1
5		1025765	Locknut (1/4-28)	1	2
6		1021344	Screw, Socket Head (5/16-18 x 1-1/2")	1	1
7		1113530	Attachment, Hinge	1	1
8		1096810	Screw, Socket Head (1/4-28 x 1-3/4")	1	1
9		1113529	Hinge, Adjustable Angle Footrest	1	1
10		1065362	Locknut (1/4-28)	1	1
11		1114688	Spacer, Hinge, Black	1	1
12		1025456	Washer, Nylon (3/4 x 1/4 x 1/32")	1	2
13	D	See Chart	#13 60 Degree, 60 Degree MFX, 70 Degree Non-Tapered and ELR's	1	1
13	D	See Chart	#13 70 Degree Tapered	1	1
13	D	See Chart	#13 Articulating Legrests	1	1
14	E	See Chart	#14 90 Degree and 70 Degree MFX	1	1

NOTE: A - Swingaway Front Riggings, Except 90 Degree and 70 Degree MFX  
B - Articulating Legrest  
C - ALPT 2" Longer  
D - Includes items 1-11  
E - Includes items 2-10, and 12  
F - Please refer to the charts in this category for footplate size application specific to front rigging type.  
G - This footplate was revised 9/2/2008 with rounder corners and accessory holes changed from 8 to 4. Recommended to replace footplate in pairs to match sides.

# Adjustable Angle Footplates with or without Pivot Tube - AT5543 (Chairs Built After 5/31/03)

## #13 Adjustable Angle Footplates w/ Pivot Tubes

60 Degree, 60 Degree MFX, 70 Degree Non-Tapered and ELR's

Straight Slide Tube (10-1/4")	Right	Left
12" Wide (3-1/4" Footplate)	1114638-NLA	1114639-NLA
13" Wide (4-1/4" Footplate)	1114640	1114641
14-15" Wide (5-1/4" Footplate)	1114642	1114643
16-17" Wide (6-1/4" Footplate)	1114644	1114645
18-22" Wide (7-1/4" Footplate)	1114646	1114647
ALPT Straight Slide Tube (12-1/4")	Right	Left
12-13" Wide (4-1/4" Footplate)	1114650	1114651
14-15" Wide (5-1/4" Footplate)	1114652	1114653
16-17" Wide (6-1/4" Footplate)	1114654	1114655
18-22" Wide (7-1/4" Footplate)	1114656	1114657

# Adjustable Angle Footplates with or without Pivot Tube - AT5543 (Chairs Built After 5/31/03)

## #13 Adjustable Angle Footplates w/ Pivot Tubes

### 70 Degree Tapered

Straight Slide Tube (10-1/4")	Right	Left
16" Wide (4-1/4" Footplate)	1114640	1114641
17-18" Wide (5-1/4" Footplate)	1114642	1114643
19-22" Wide (6-1/4" Footplate)	1114644	1114645
ALPT Straight Slide Tube (Aluminum 12-1/4")	Right	Left
16" Wide (4-1/4" Footplate)	1114650	1114651
17-18" Wide (5-1/4" Footplate)	1114652	1114653
19-22" Wide (6-1/4" Footplate)	1114654	1114655

## #13 Adjustable Angle Footplates w/ Pivot Tubes

### Articulating Legrests

Articulating Legrest (11-7/8")	Right	Left
14-15" Wide (5-1/4" Footplate)	1114708	1114709
16-17" Wide (6-1/4" Footplate)	1114710	1114711
18-22" Wide (7-1/4" Footplate)	1114712	1114713

**Adjustable Angle Footplates with or without Pivot Tube -  
AT5543  
(Chairs Built After 5/31/03)**

**#14 Adjustable Angle Footplates w/ Pivot Tubes**

**90 Degree and 70 Degree MFX**

No Slide Tube Bolts Through Support	Right	Left
12-13" Wide (4-1/4" Footplate)	1114630	1114631
14-15" Wide (5-1/4" Footplate)	1114632	1114633
16-17" Wide (6-1/4" Footplate)	1114634	1114635
18-22" Wide (7-1/4" Footplate)	1114636	1114637