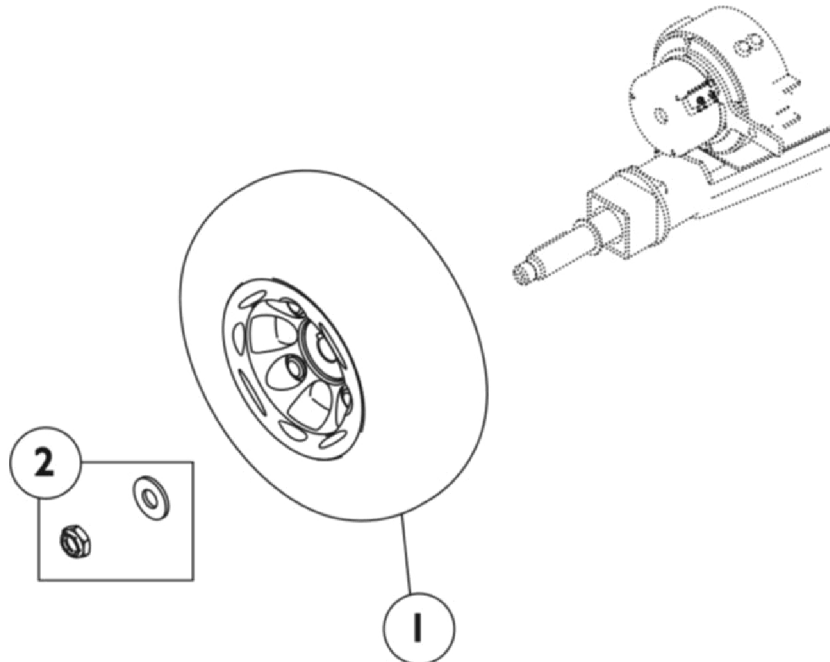


Drive Wheels



Item Number	Note	Part Number	Description	Quantity Per	
				Package	Assembly
1	A	1114529-NLA	NLA - Wheel Assembly, Pnuematic w/ Flat Free Insert (9" x 3")	1	2
1	B	1105043	Drive Wheel Assembly, Flat Free Foam, Grey Tire/Black Rim (10" x 3")	1	2
2	C	1114258-NLA	NLA - Kit, Wheel Mounting Hardware	1	1
			Locknut (1/2-20)	1	2
			Washer (1/2")	1	2

NOTE: A - Used on the Zoom 300.
 B - Used on the Zoom 400.
 C - Includes: (2) Washers and (2) Locknuts.